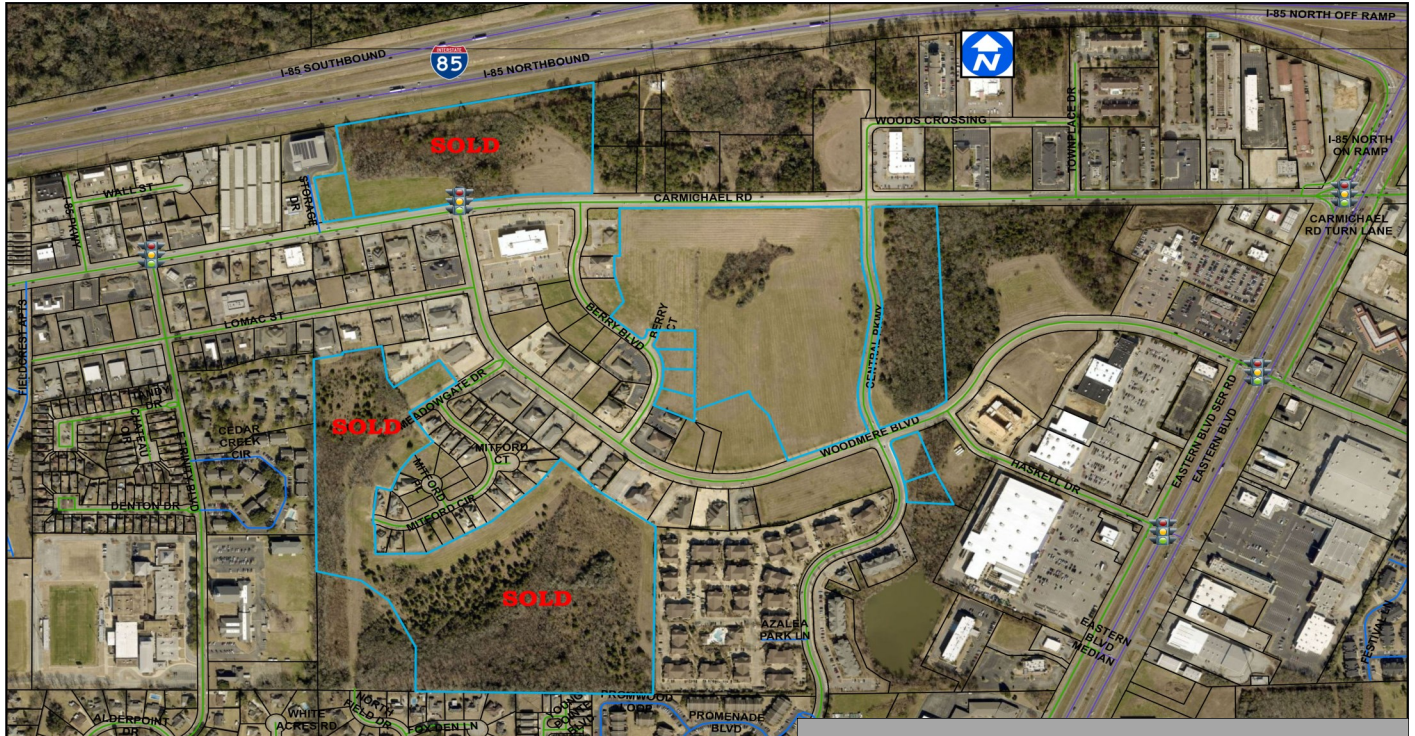




JOHN STANLEY  
&  
ASSOCIATES

COMMERCIAL REAL ESTATE



**Marshall Family Property**  
Carmichael Rd/Woodmere Blvd/Central Pkwy  
Montgomery, AL 36106

**FOR SALE**

- **Sale Price:** See Attached
- **Interstate Exit:** I-85 - Exits #4 & #6
- **Zoning:** B-2 & O-1
- **Best Use;** Commercial & Office
- **Visibility:** Excellent
- **Possession:** Immediate
- **Listing Type:** Exclusive

**MIDTOWN OPPORTUNITY!**

Business Lots! Office Lots! Retail Lots!  
It's all here and available in Midtown  
Montgomery! Contact Lee Meriwether,  
CCIM, for more information at (334)  
398-1808.

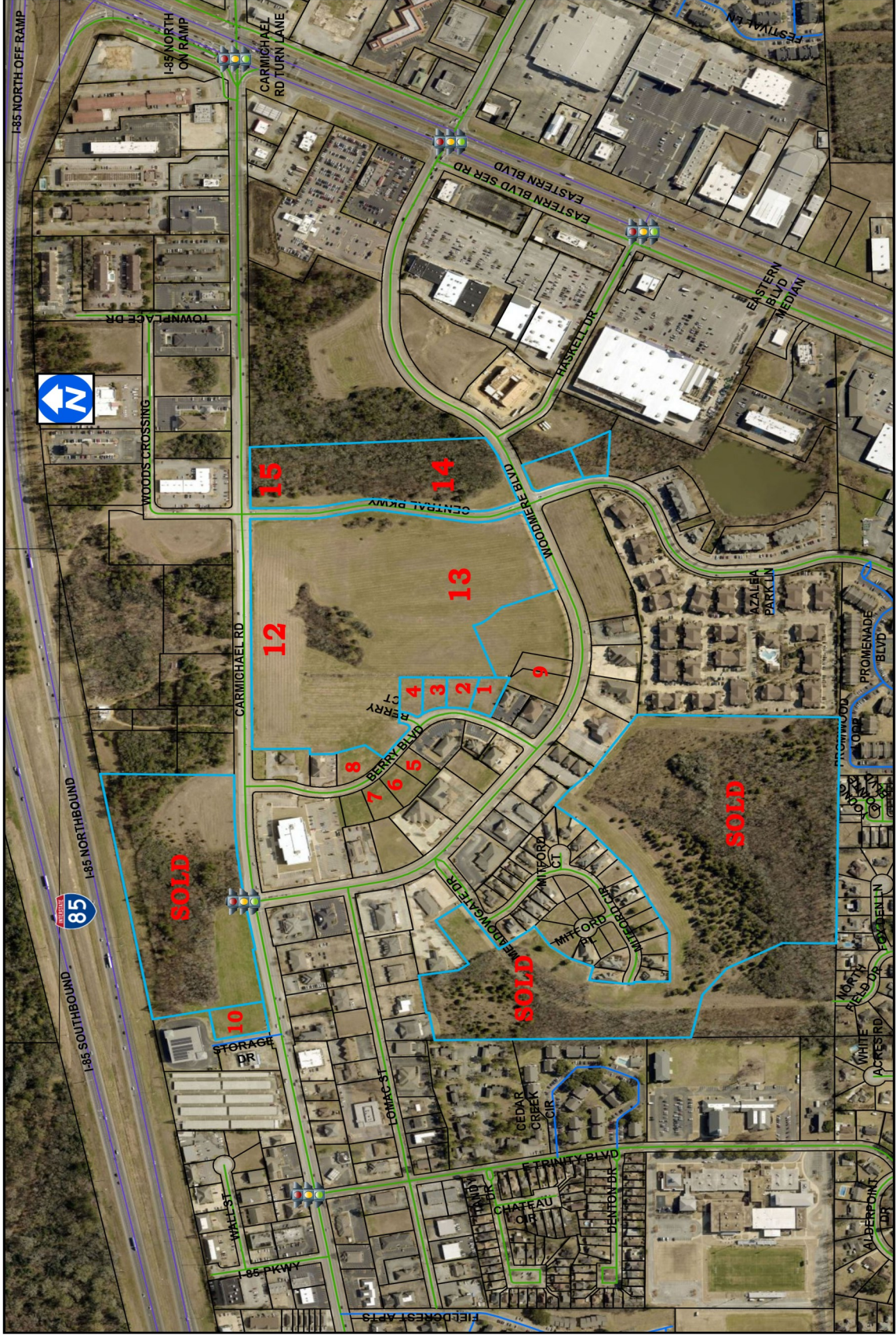


**Lee W. Meriwether, CCIM**  
John Stanley & Associates, Inc.  
4747 Woodmere Blvd.  
Montgomery, AL 36106  
(334) 271-2475 voice  
(334) 271-2421 fax  
(334) 398-1808 cell  
[lmeriwether@johnstanleyassociates.com](mailto:lmeriwether@johnstanleyassociates.com)  
[www.johnstanleyassociates.com](http://www.johnstanleyassociates.com)



All information is from sources deemed reliable, but no warranty is made as to the accuracy thereof and same is submitted subject to errors, omissions, change of price, or other conditions, such as prior sales or withdrawal without notice by John Stanley & Associates, Inc. or the Owner.





FHM properties

1 inch = 400 feet



## Pricing Schedule

April 10, 2024

<u>Parcel</u>	<u>Zoning</u>	<u>Approximate Size</u>	<u>Listed Price</u>
1	O-1	± 18,975 S.F.	\$4.00/S.F.
2	O-1	± 18,660 S.F.	\$4.00/S.F.
3	O-1	± 17,900 S.F.	\$4.00/S.F.
4	O-1	± 18,410 S.F.	\$4.00/S.F.
5	O-1	± 18,000 S.F.	\$4.00/S.F.
6	O-1	± 22,388 S.F.	\$4.00/S.F.
7	O-1	± 21,063 S.F.	\$4.00/S.F.
8	O-1	± 25,887 S.F.	\$4.00/S.F.
9	O-1	± 49,958 S.F.	\$4.00/S.F.
10	B-2	± 36,000 S.F.	\$10.00/ S.F.
11	B-2	± 14.71 Acres	<b>SOLD</b>
12	B-2	± 14.67 Acres	\$4.00/S.F. as an entire parcel
13	O-1	± 11.86 Acres	\$3.00/S.F. as an entire parcel
14	O-1	± 4.12 Acres	\$3.00/S.F. as an entire parcel
15	B-2	± 4.33 Acres	\$3.00/S.F. as an entire parcel
16	PGH-40 / R-75-S	± 37 Acres	<b>SOLD</b>

**\*ALL LOTS ARE SUBJECT TO ARCHITECTURAL, SITE PLAN AND  
USE APPROVAL BY OWNER.**