



Video Walk Through can be found [here](#).

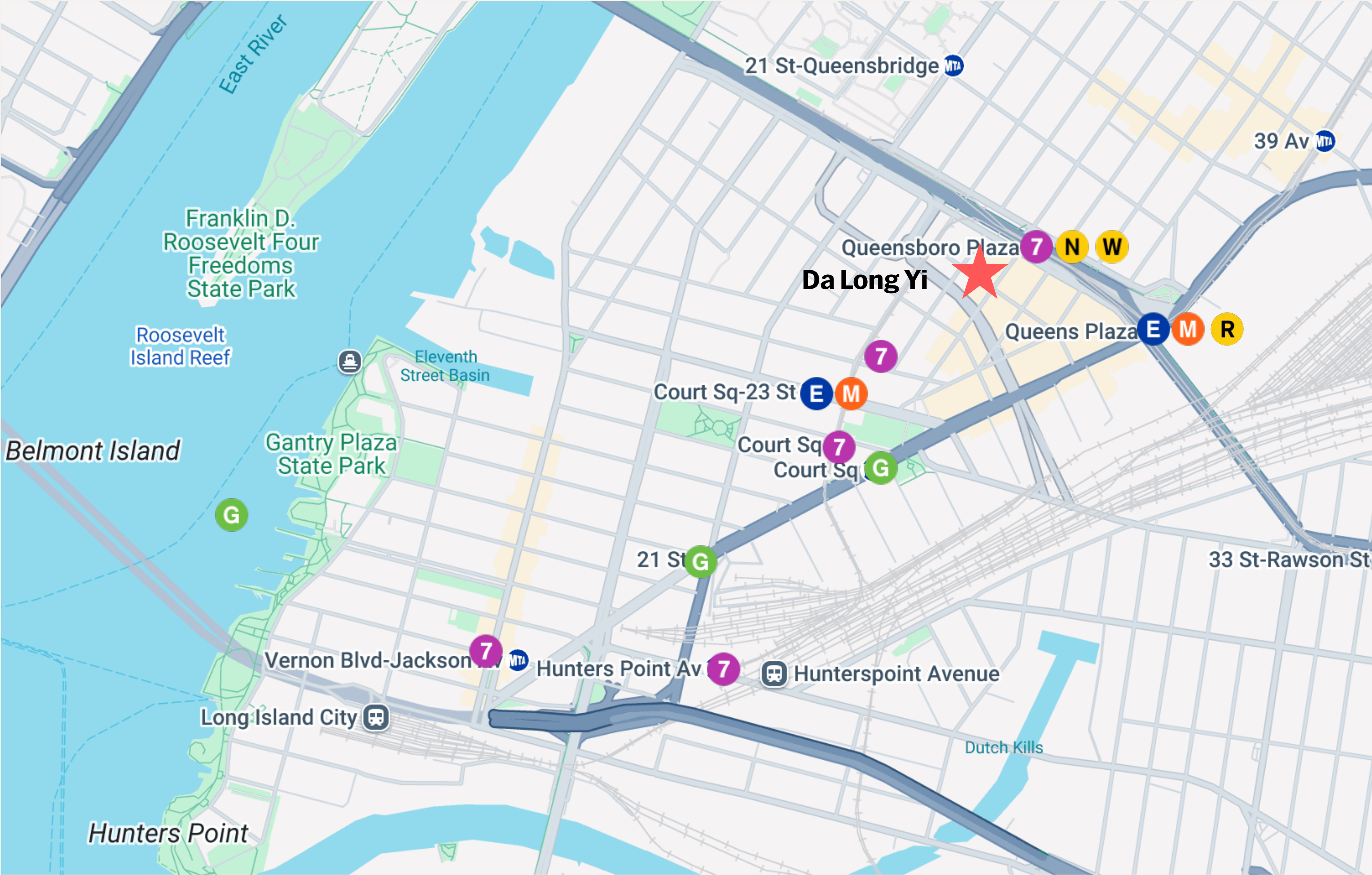
FOR LEASE

	Da Long Yi
Address:	42-22 Crescent St, Long Island City, NY 11101
Current Rent:	\$20,157.10
Approximate SF:	2,500 on GF and 1,500 on LL
Key Money:	Upon Request
Term:	12 years + 10 year extension option
Possession:	Immediate

Summary:

A rare opportunity is now available to take over a fully built-out, profitable international hot pot franchise in the heart of Long Island City. The space is fully vented with Type 1 ventilation, equipped with gas, and holds an active beer and wine license. It features 22 electric hot pot tables and accommodates seating for up to 144 guests.

Located in one of NYC’s fastest-growing neighborhoods, this turnkey setup is ideal for continuing the current successful operation or reimagining the space with a new concept.



PHOTOS



Exterior



Entrance



Interior



PHOTOS



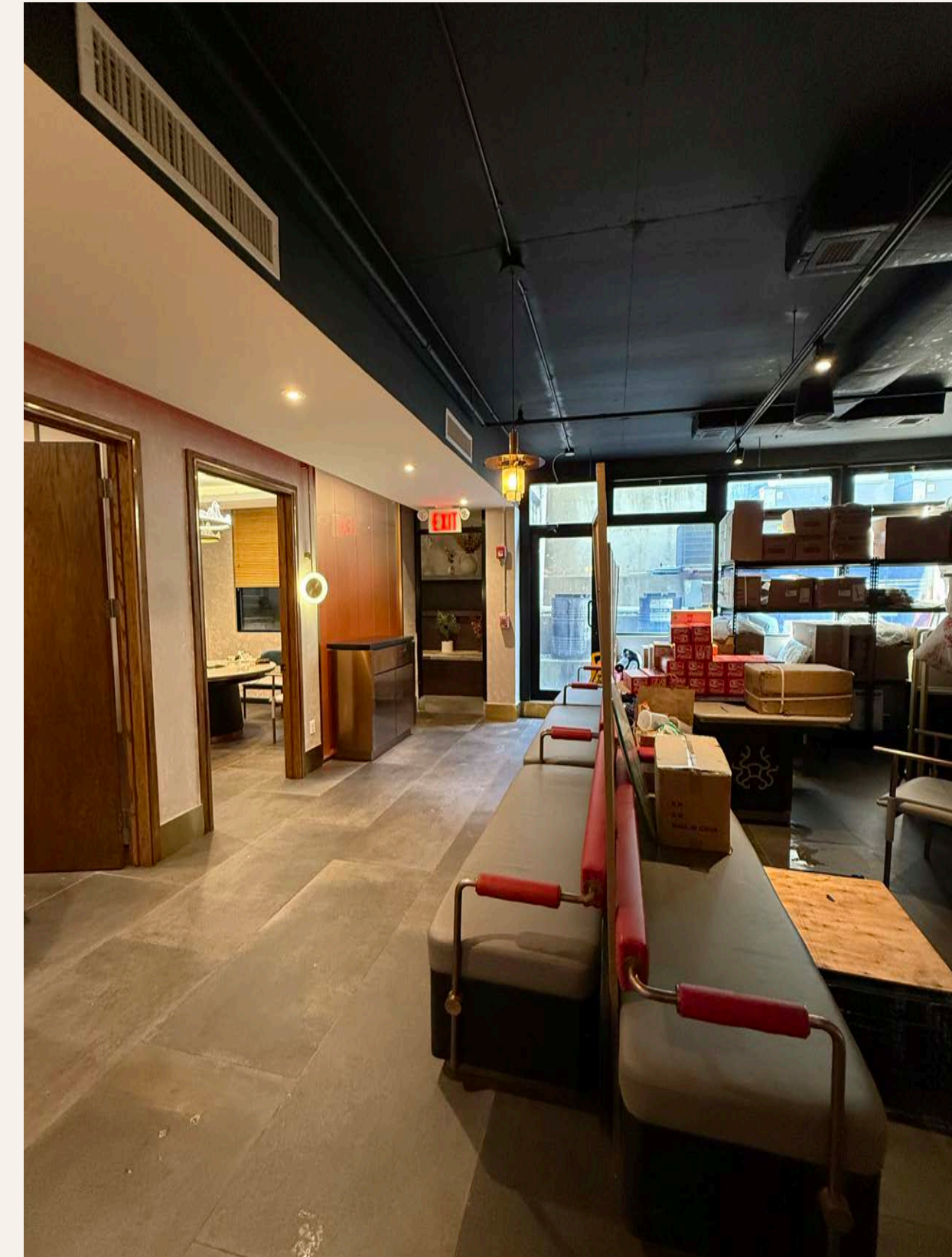
Multi Level Space



PHOTOS



Private Dining Room in lower level



Additional Seating or Storage

PLEASE CONTACT:

Evan Huang

evan@charneycompanies.com

321-217-8198

Phillip Wang

phil@charneycompanies.com

408-621-2068



LET'S BUILD
SOMETHING
BEAUTIFUL.

CHARNEY

www.charneycompanies.com

CHARNEY

www.charneycompanies.com

LET'S BUILD
SOMETHING
BEAUTIFUL.

CHARNEY

www.charneycompanies.com