



Concept only need not be built

## **New Construction Flex Building on Ziegler Blvd**

**Size: 2800-3200 SF**

**Price: 12 PSF NNN**

**Contact:**

**Colby Herrington**

**251-490-6995**

**Colby@herringtonrealty.net**

- Delivery estimated Q1 2025
- Warehouse space of 2,000- 2,200 SF
- Office space 800-1,000 SF
- Landlord willing to modify floorplan for the correct tenant and terms
- 5 minutes from Mobile Regional Airport
- Call for more information

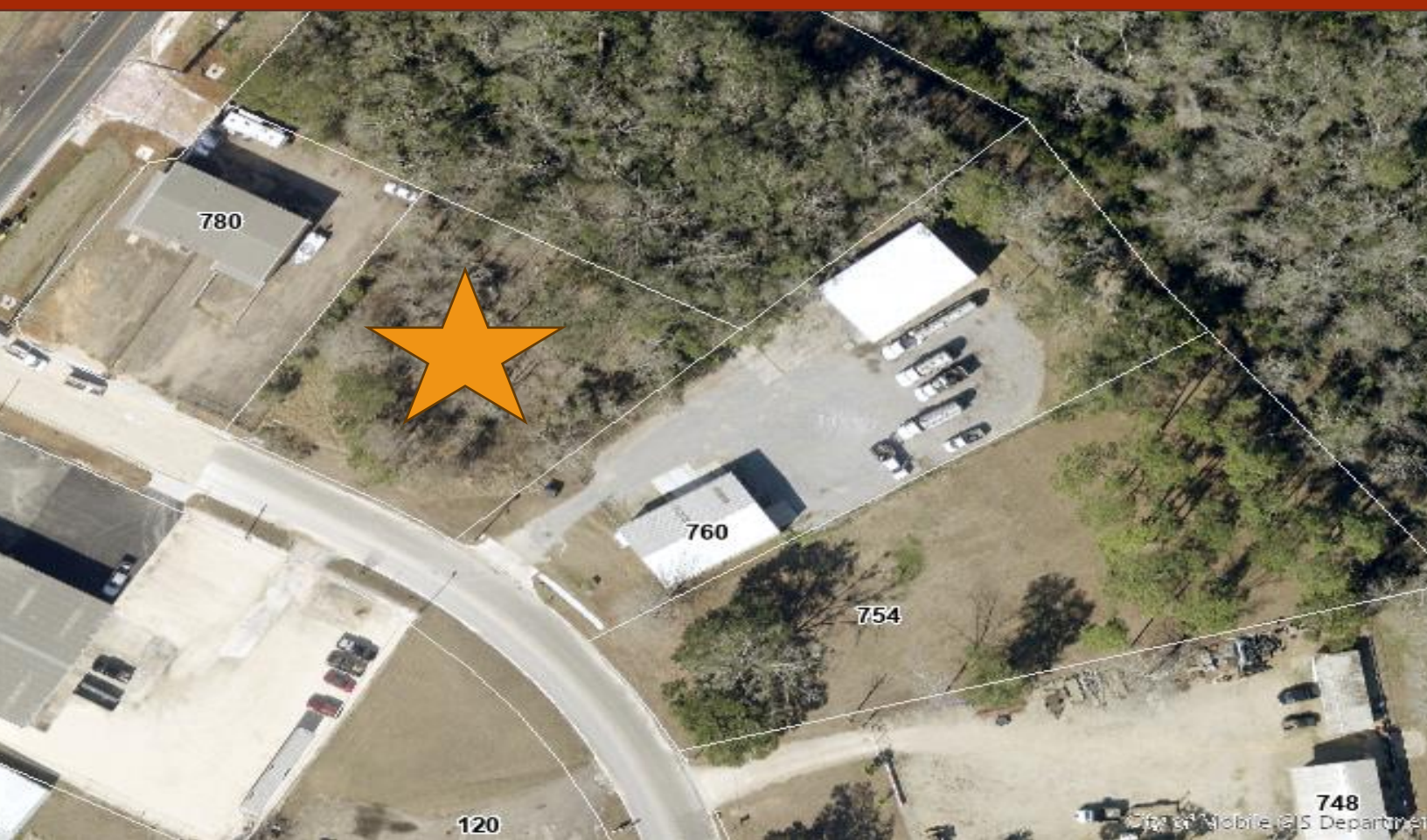
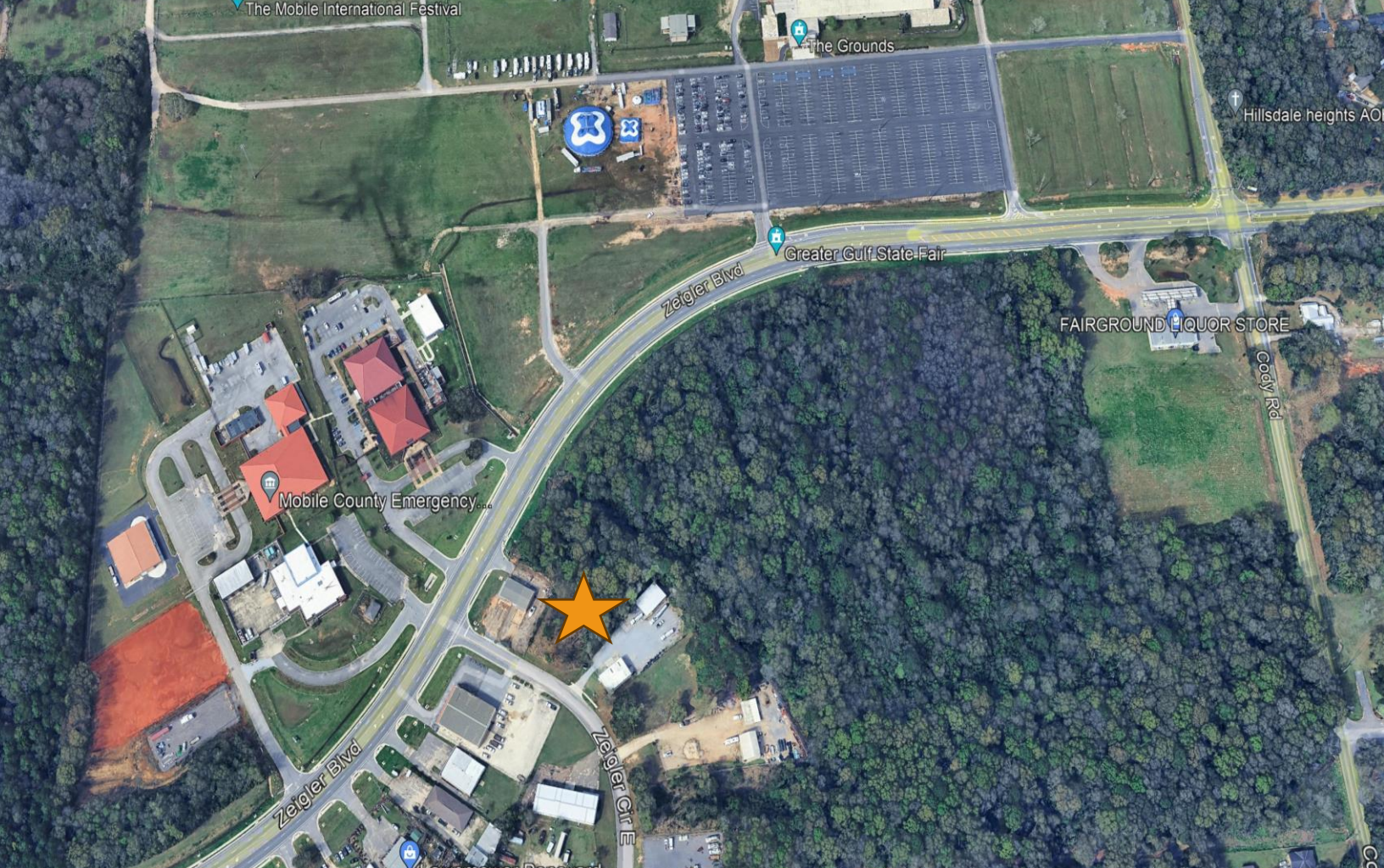
**Herrington  
Realty, Inc.**  
Commercial / Land Sales  
**251-510-2277**



Contact: Email: [Colby@herringtonrealty.net](mailto:Colby@herringtonrealty.net)

[www.herringtonrealty.com](http://www.herringtonrealty.com)







Workshop

Kitchen

Conference Room

Restrooms

Hall

Maintenance Room

Private Office

Reception

Hall

Private Office

