



VALLEY ROAD

CENTRAL VIRGINIA INDUSTRIAL CENTER

UP TO 360,000 SF AVAILABLE

Grant Bates

Executive Managing Director

t 434-882-1176

grant.bates@nmrk.com

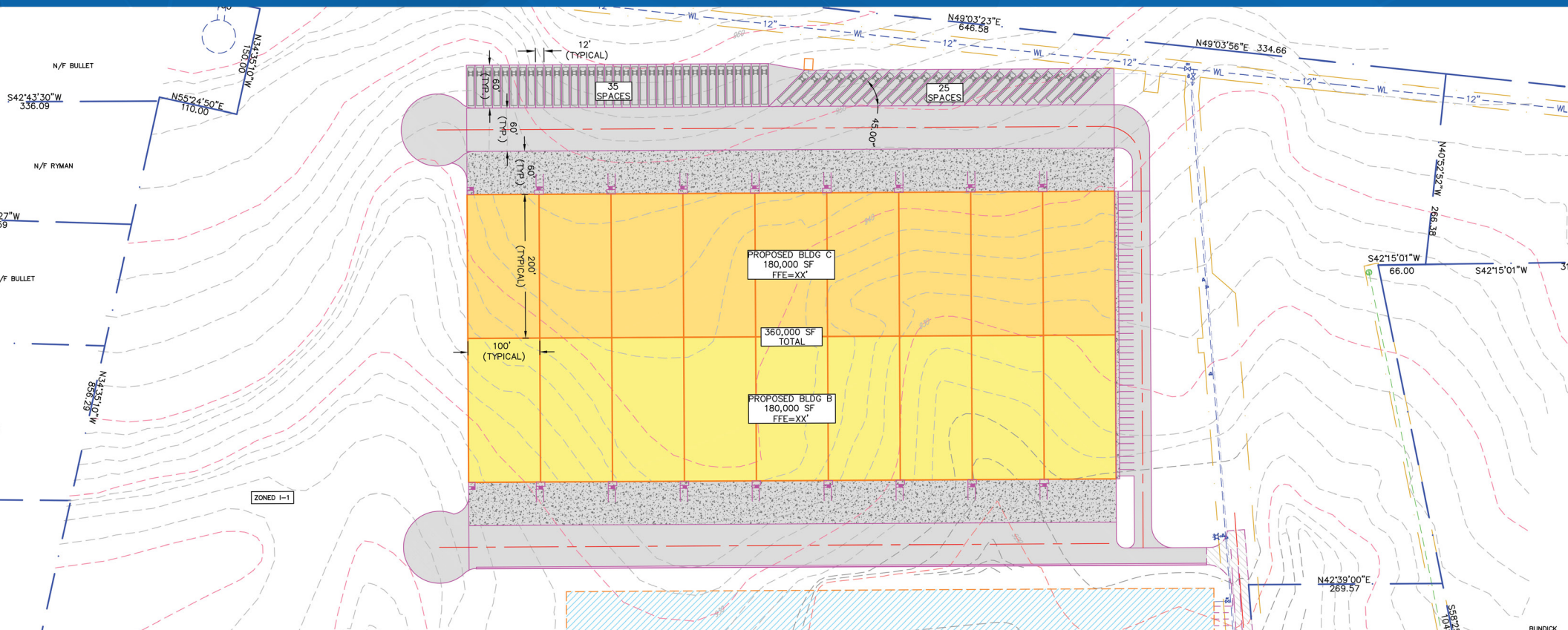
Wyant Wharton

Associate

t 434-906-9373

wyant.wharton@nmrk.com

NEWMARK



HIGHLIGHTS

- Total Space 180,000- 360,000 SF
- Clear Height 32'
- Column Spacing 50'x50'
- Dock doors 49-98
- Trailer Parking 60 spaces
- Sprinkler ESFR
- Floor Slab 7"



Geographic Location and Logistics

Strategically situated along the Interstate 81 corridor, the Shenandoah Valley provides excellent access to major markets in the Eastern United States. Its proximity to Interstate 64 also enhances connectivity to seaports and the broader national highway network. This advantageous location facilitates efficient distribution and logistics operations, enabling businesses to easily transport goods

Access to Markets

The Valley's geographic positioning allows businesses to reach a significant portion of the U.S. population within a day's drive. This access is key for industries requiring rapid distribution channels to major urban centers, including Washington D.C., Philadelphia, New York, and Atlanta.



Workforce and Education

A strong local workforce supported by educational institutions, including 7 technical schools and 11 colleges/universities, fuels the industrial sector. Initiatives aimed at workforce development ensure a steady supply of skilled labor pertinent to various industries. Collaborations between the private sector and educational institutions foster specialized training programs that align with the needs of industries in the area.

Affordable Cost of Doing Business

Compared to other regions in the Eastern U.S., the Shenandoah Valley often offers a more cost-effective environment for businesses. This includes competitive land and property prices, lower costs of living, and attractive incentives from both state and local governments aimed at fostering industrial growth.

Quality of Life

Besides logistical and economic benefits, the Shenandoah Valley is known for its natural beauty, recreational opportunities, and quality of life. This aspect can be instrumental in attracting and retaining top talent, a critical factor for businesses in today's competitive landscape.

Supportive Business Environment

Virginia's business-friendly policies, combined with active economic development efforts in the Shenandoah Valley, create a supportive environment for industrial companies. The area offers various incentives such as tax credits, financing, and grants designed to aid the establishment and expansion of businesses.

These strategic advantages make the Shenandoah Valley an attractive location for industrial operations, offering a blend of logistic efficiency, market access, skilled labor, and a supportive economic environment that can drive business success.



 **PORT OF NEW YORK AND NEW JERSEY**

NEW YORK

 **PORT OF PHILADELPHIA**

PHILADELPHIA

 **PORT OF BALTIMORE**

BALTIMORE

WASHINGTON DC


CENTRAL VIRGINIA INDUSTRIAL CENTER

VIRGINIA

RICHMOND

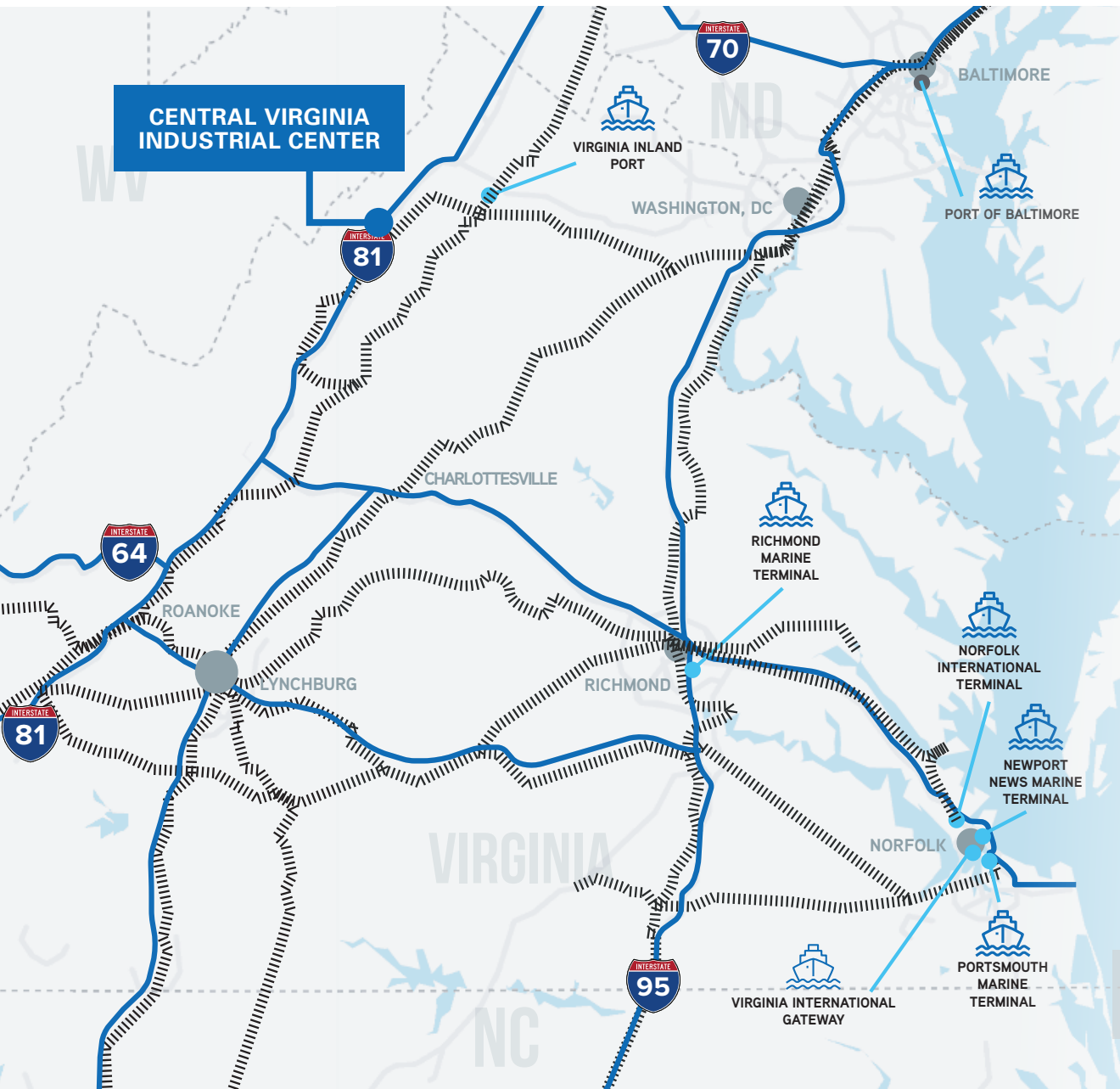
 **PORT OF NORFOLK**

VIRGINIA BEACH

RALEIGH

NORTH CAROLINA

LOCATION OVERVIEW



SERVED BY TWO OF THE NATION'S LARGEST RAILROADS

The region is predominantly served by CSX and Norfolk Southern rail with 3,000+ miles of track. The extensive rail system supported by two Class I railroads synergistically supports the other facets of the region's excellent freight distribution infrastructure, including two major international ports, multiple intermodal transportation hubs and the broad interstate network.

2ND DENSEST INTERSTATE SYSTEM

The region is served by an extensive network of well-maintained and efficient interstates including I-81, I-95, I-64, I-77 and I-85. The connectivity and density of these north/south and east/west freight highways make local to international distribution highly efficient. Several key highlights include:

2X TOP 25
VA HAS TWO OF THE TOP 25 DOMESTIC INTERSTATE FREIGHT CORRIDORS

42%
OF STATEWIDE TRUCK TRAFFIC IS HANDLED BY I-81

2X TOP 25
WITH MAJOR PORT AND RAIL

\$497 B
IN GOODS ARE SHIPPED TO/FROM VA ANNUALLY

INTERSTATE HIGHWAY

RAILWAY SERVICE

PORT OF VIRGINIA

LOCATION OVERVIEW

LOGISTICS INFRASTRUCTURE TRIFECTA

The ports of Virginia and Baltimore are major catalysts for economic and industrial real estate growth in the Mid-Atlantic.

THE PORT OF VIRGINIA

The Port of Virginia is the third-largest port on the East Coast and the sixth largest in the country. It is comprised of four coastal terminals in Norfolk, the Richmond Marine Terminal in Richmond, and the Virginia Inland Port in Front Royal (60 miles west of D.C.).

3RD

LARGEST PORT ON
EAST COAST

3.2M

TEU'S YTD 2021

↑24%

INCREASE IN
FREIGHT YOY

THE PORT OF BALTIMORE

The Port of Baltimore is the 13th largest port in the United States and the closest to the Midwest Region. Comprised of five public and twelve private terminals, the Port of Baltimore is one of only four Eastern U.S. ports with a 50 foot shipping channel and two 50 foot container berths, allowing the Port to accommodate some of the largest cargo ships in the world

13TH

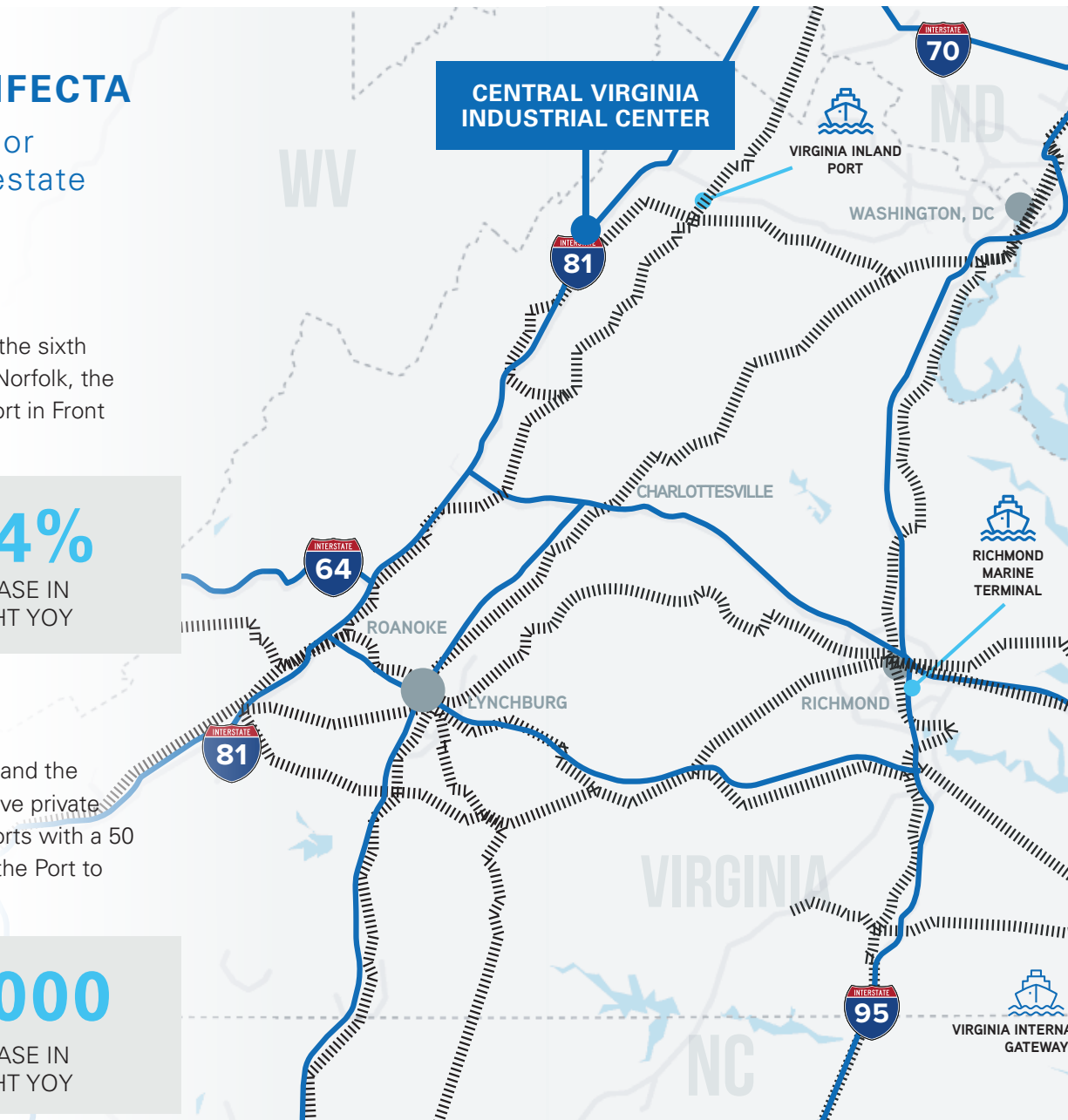
LARGEST PORT ON
EAST COAST

50+

TEU'S YTD 2021

15,000

INCREASE IN
FREIGHT YOY





Grant Bates

Executive Managing Director

t 434-882-1176

grant.bates@nrmk.com

Wyant Wharton

Associate

t 434-906-9373

wyant.wharton@nrmk.com

NEWMARK