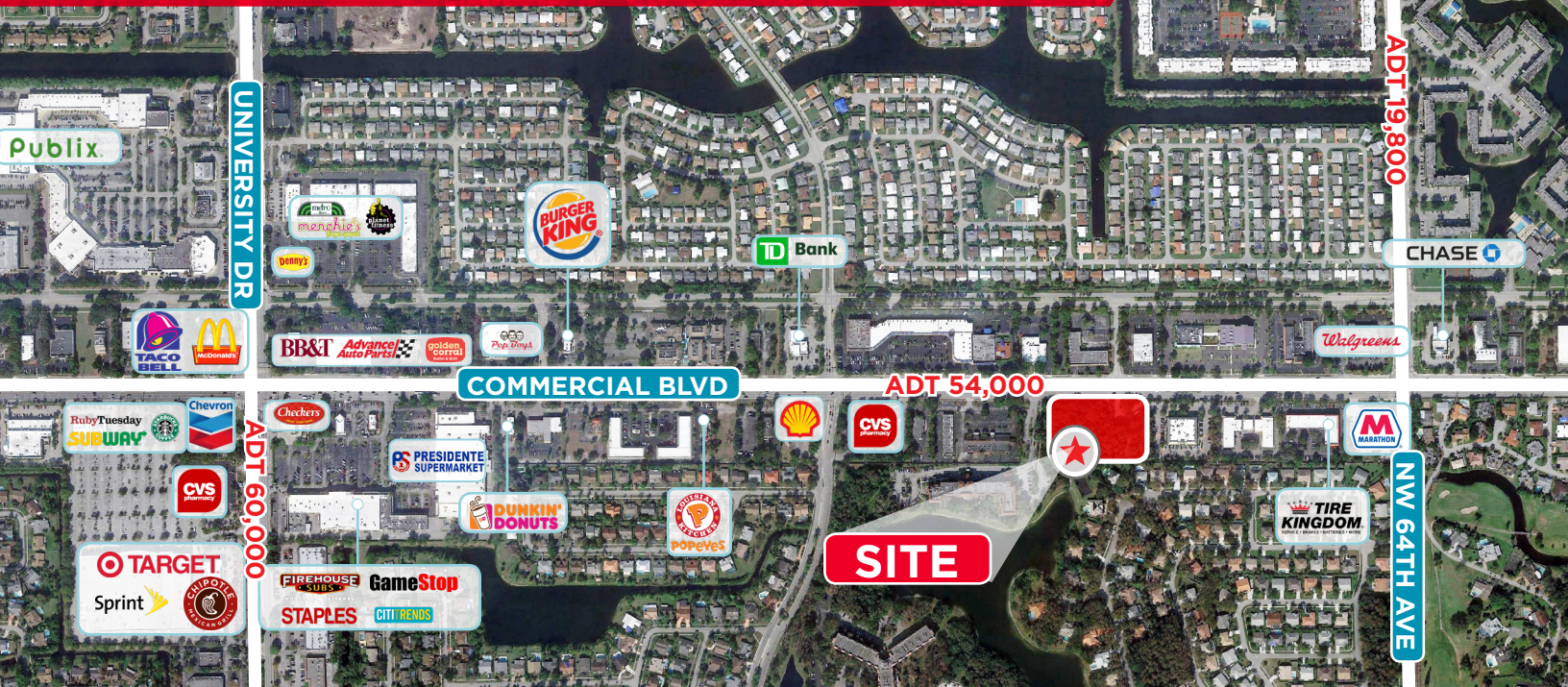


LAND AVAILABLE

6650 W Commercial Blvd

Lauderhill, FL 33319



DEMOGRAPHICS 2019		1 Mile	3 Mile	5 Mile
Population		18,398	200,985	463,196
Daytime Population		11,476	118,791	274,770
Average HH Income		\$71,069	\$65,763	\$73,470

PROPERTY HIGHLIGHTS

- Up to 3.33 acres available
- 5 separately platted parcels
- Zoned General Commercial
- Over 500' of Frontage
- ADT of 54,000



DOMINIC DELGADO

Senior Director Retail Brokerage
+1 954 377 0529
dominic.delgado@cushwake.com

CUSHMAN & WAKEFIELD

225 NE Mizner Boulevard, Suite 300
Boca Raton, FL 33432
+1 954 771 0800



**CUSHMAN &
WAKEFIELD**

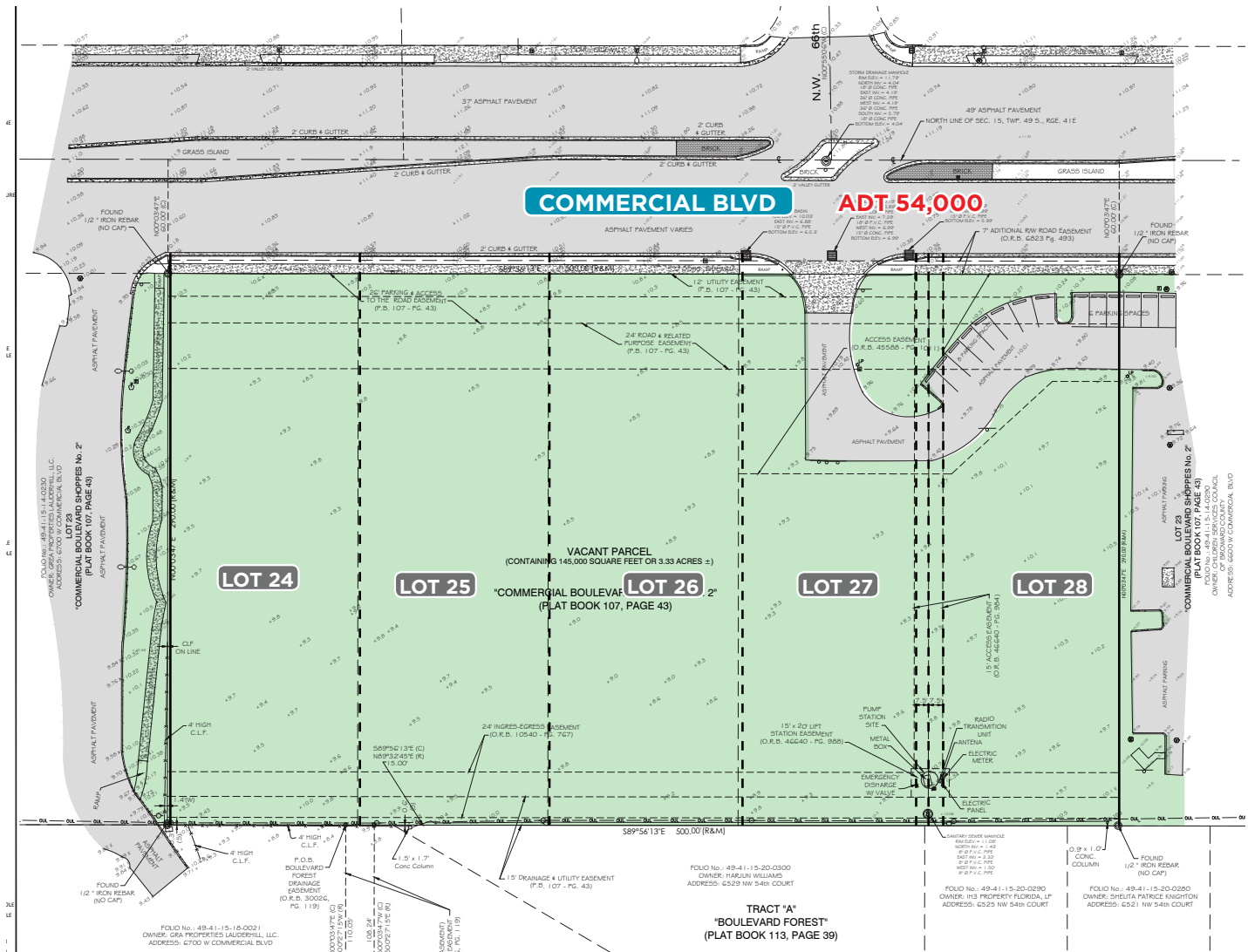
cushmanwakefield.com

6650 W Commercial Blvd

Lauderhill, FL 33319

LAND AVAILABLE

SURVEY



DOMINIC DELGADO
Senior Director Retail Brokerage
+1 954 377 0529
dominic.delgado@cushwake.com

CUSHMAN & WAKEFIELD
225 NE Mizner Boulevard, Suite 300
Boca Raton ,FL 33432
+1 954 771 0800



CUSHMAN & WAKEFIELD

cushmanwakefield.com