



111 S. Lincoln Street, Hinsdale

Prime Class A Office Space Available

- Grade Level Entry
- Elevator Building
- Abundant Windows & Balconies
- Center of Downtown Hinsdale
- Municipal and Street Parking
- One Block to Commuter Train

Chris Schramko
(630) 986-9400 or cjschramko@schramko.com
113 S. Garfield Street, Suite 200, Hinsdale, IL 60521

111 S. Lincoln Street, Hinsdale



111 S. Lincoln Street Hinsdale is surrounded by all Hinsdale amenities including restaurants, services and retail shops as well as Grant Square Shopping Center (Walgreens, Kramer Foods, UPS and other retail trade & business). In addition, 111 S. Lincoln is conveniently located one block from the commuter train offering easy access to and from downtown Chicago and close to the US Post Office and Fed Ex.

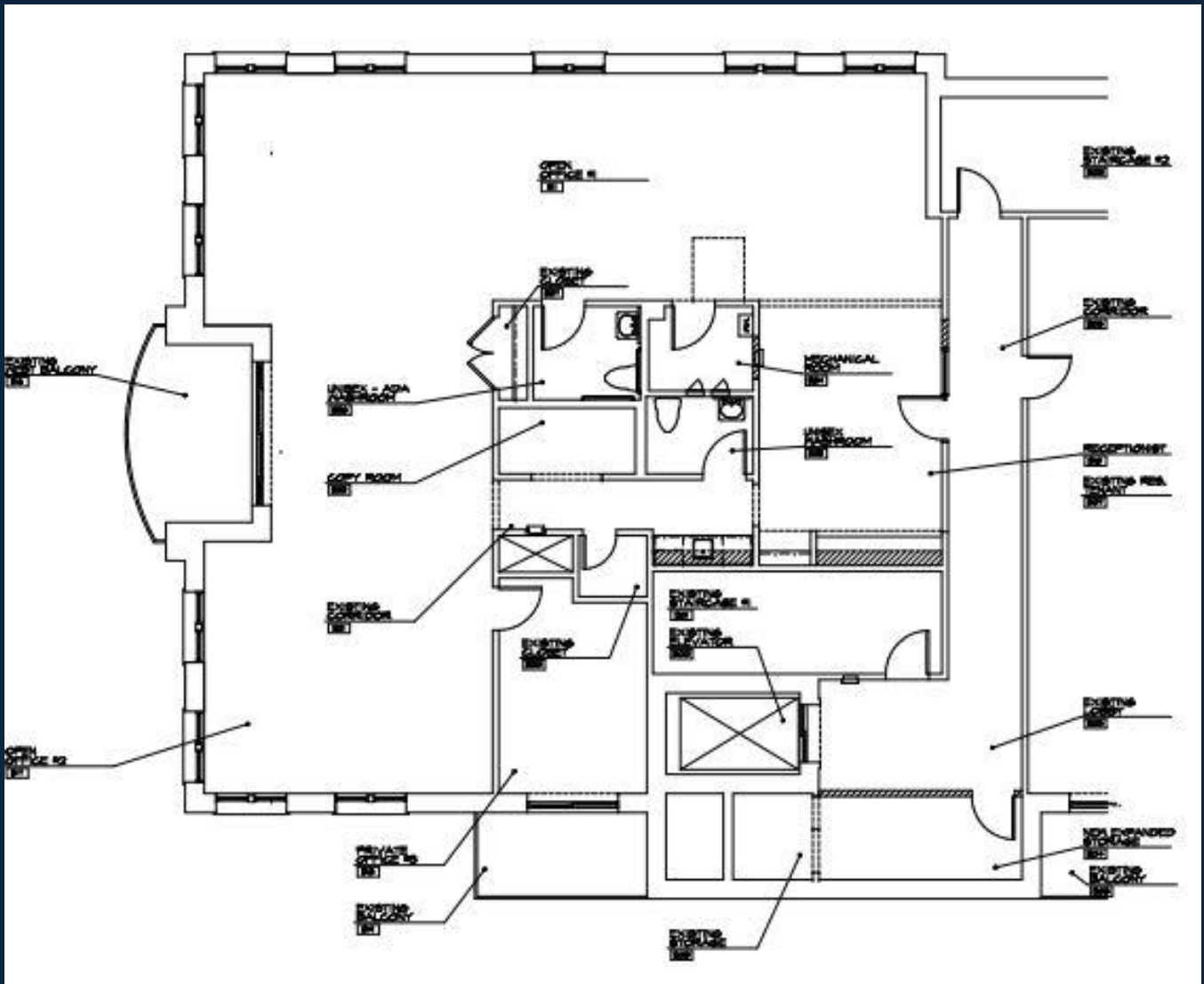
111 S. Lincoln Street Hinsdale is located equidistant between O'Hare International Airport and Midway Airport. Close proximity to I-294, I-88, and I-55 allows quick and easy access to the entire Chicago metropolitan area.

111 S. Lincoln Street, Hinsdale

Office Space

Suite 301

- 3rd floor
- 2,670 RSF
- Elevator/ADA access
- Windows on 3 sides
- 2 Balconies
- Open plan with private office
- Built in kitchen/coffee bar
- Built in cabinets in reception area
- 2 private restrooms in suite
- Very High End Finishes Throughout



111 S. Lincoln Street, Hinsdale
Suite 301

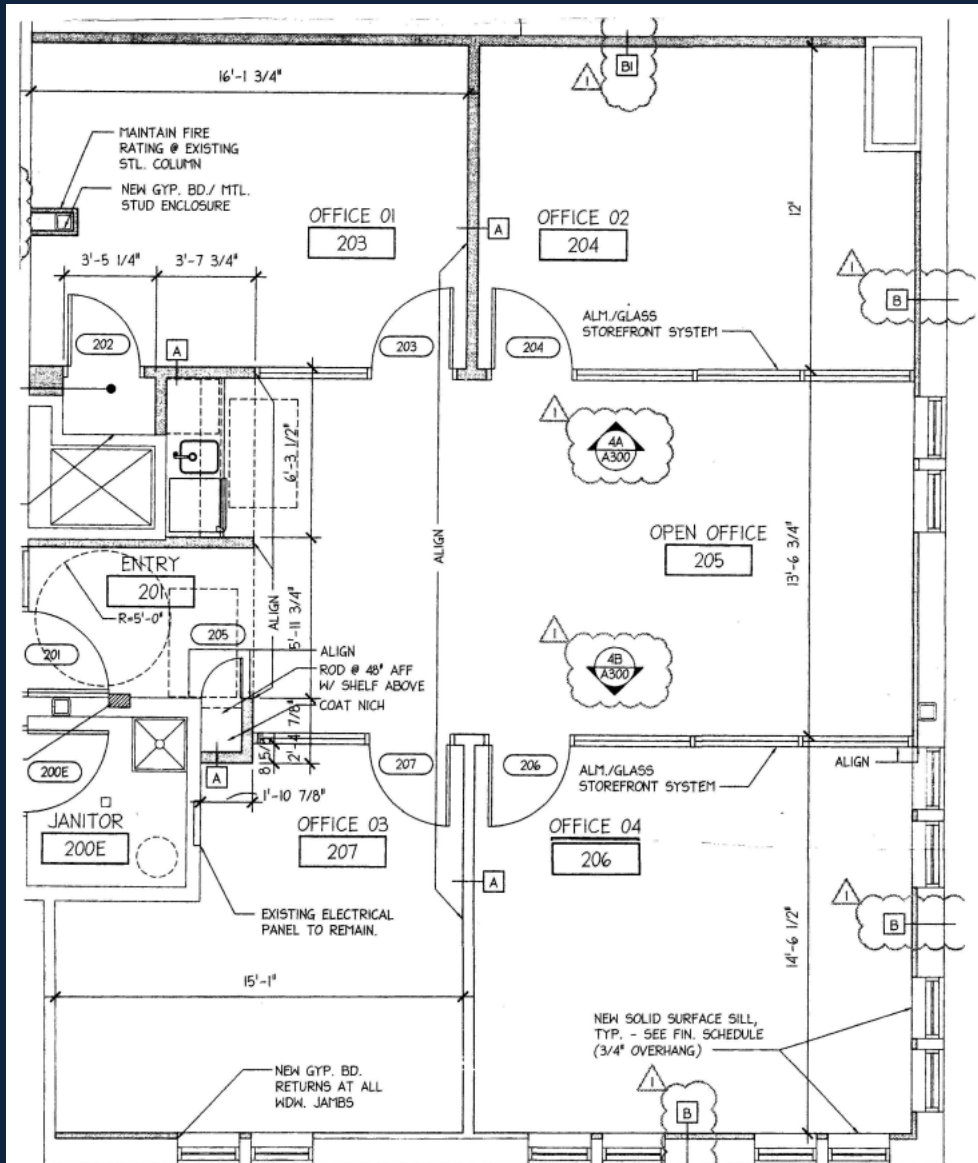




111 S. Lincoln Street, Hinsdale Office Space

Suite 202

- 2nd floor, with grade level entrance from the east side, or elevator lobby entrance from west side of building
- 1,863 RSF
- Elevator/ADA access
- 4 private offices
- Built in coffee bar
- Glass office walls
- Very High-End Finishes Throughout



Suite 202







Suite 202



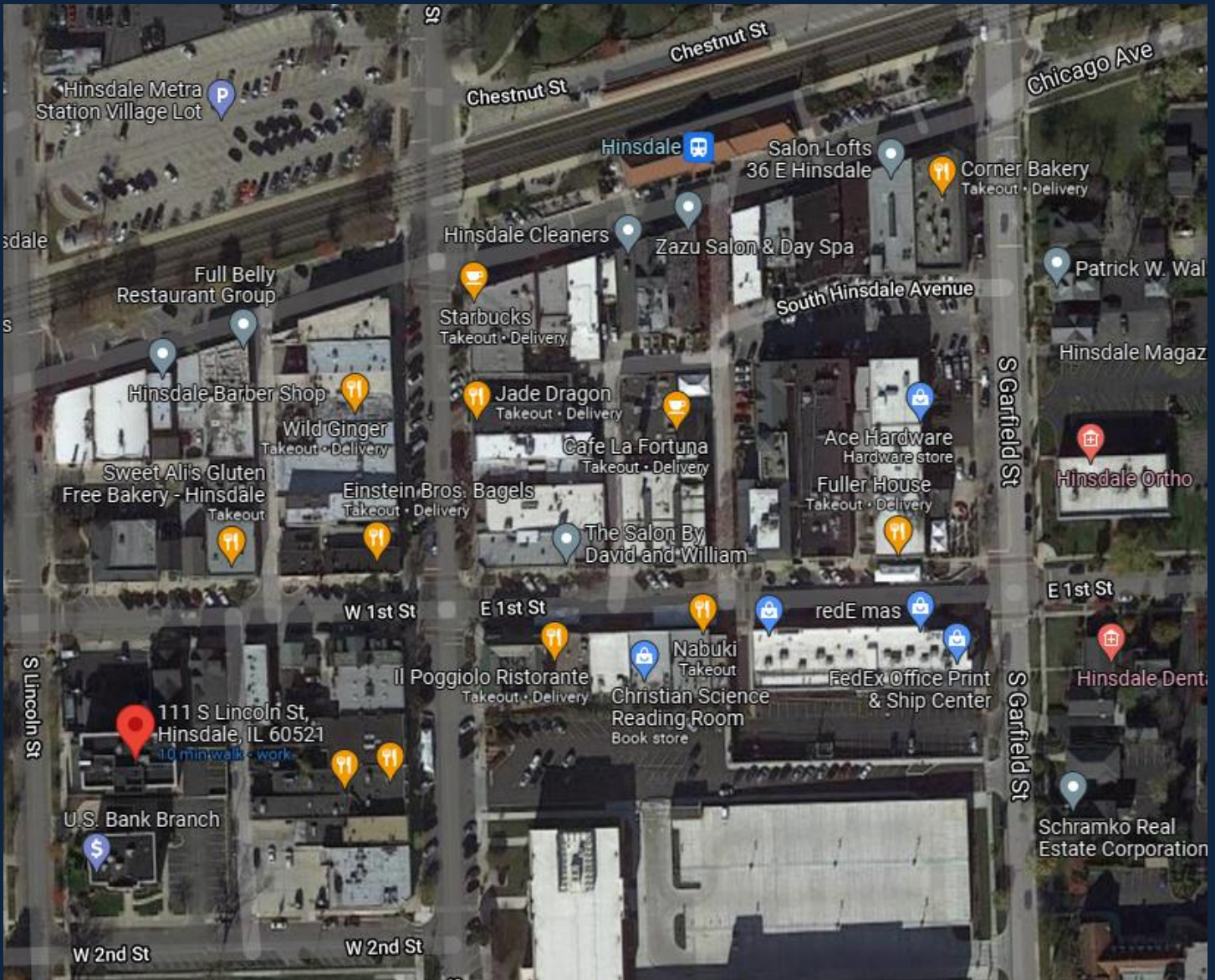
Suite 202

Suite 202



111 S. Lincoln Street, Hinsdale

Downtown Hinsdale



For further details, please contact:
Chris Schramko
(630) 986-9400
cjschramko@schramko.com