

LAND FOR SALE - Newnan, GA 30265



ZONING: C-6: Commercial
Minor Shopping District
Price: \$350,000 / Acre
GAMLS #: 20138910
8.9 +/- Acres Tract
Additional Acreage
Available



PROPERTY DETAILS

- Perfect Site for Office, Retail or Service Provider.
- Located in northern portion of Coweta County, near Arbor Springs golf course community, Lake Redwine and Serenbe.
- Site is located in the Quality Development Corridor Overlay District near Exit 51, Interstate 85.
- High visibility on Highway 154 with average annual 17,600 daily traffic count.

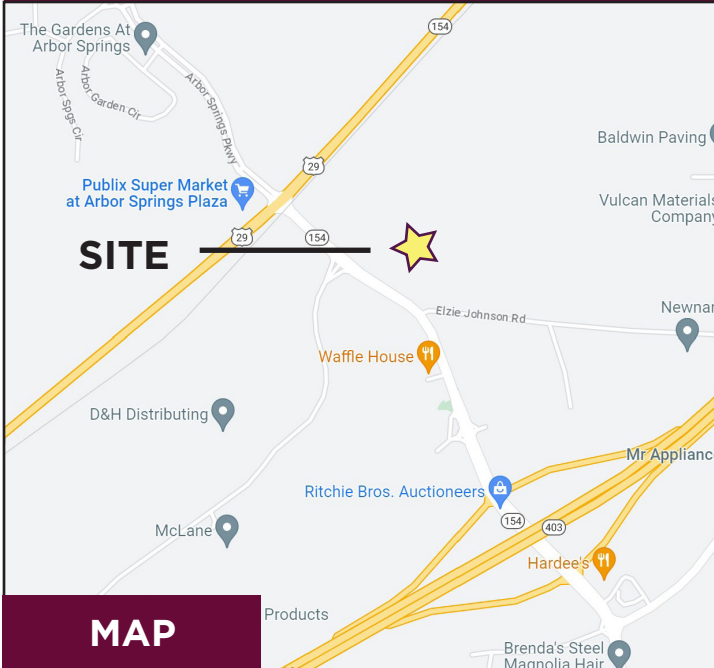
**BERKSHIRE
HATHAWAY**
HOMESERVICES

GEORGIA
PROPERTIES

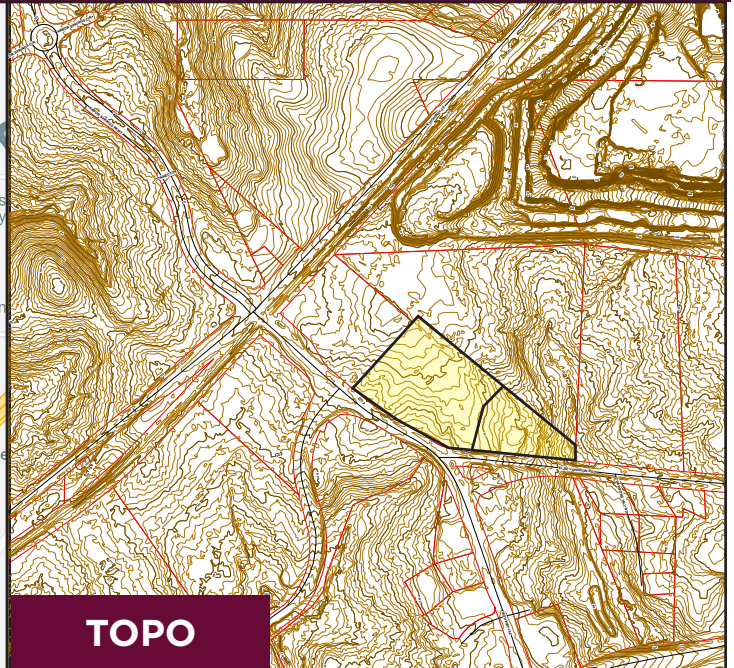
Crystal Bashakes, REALTOR®
Cell: 678-776-2280
Office: 770-487-8300
www.crystalbashakes.bhhsgeorgia.com
crystal.bashakes@bhhsgeorgia.com

LAND FOR SALE - Newnan, GA 30265

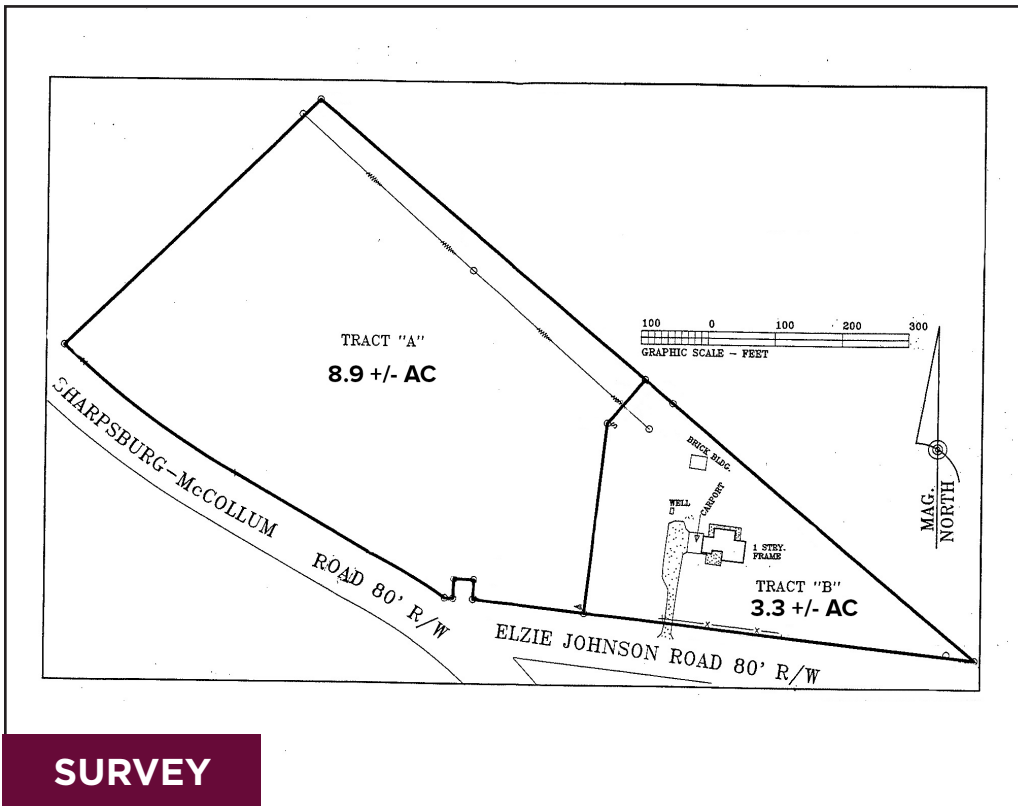
Map and Survey



MAP



TOPO



SURVEY

DISTANCE TO SITE (MILES)

I-85:
1 Mile

I-285 (via I-85):
15 Miles

Downtown Atlanta:
30 +/- Miles

**Hartsfield-Jackson
Atlanta Airport:**
22 Miles

Downtown Newnan:
10 Miles

BERKSHIRE HATHAWAY | **GEORGIA PROPERTIES**
HOMESERVICES

Crystal Bashakes, REALTOR®
Cell: 678-776-2280 | Office: 770-487-8300

LAND FOR SALE - Newnan, GA 30265

Surrounding Area



- Neighboring property address: 42 Elzie Johnson Rd, Newnan GA 30265
- Sewer & water: Coweta County Water & Sewage Authority
- Population of Coweta County is 151,481 (choosecoweta.com)
- This property has over 500 feet of frontage on Highway 154

BERKSHIRE HATHAWAY | GEORGIA PROPERTIES
HOMESERVICES

Crystal Bashakes, REALTOR®
Cell: 678-776-2280 | Office: 770-487-8300