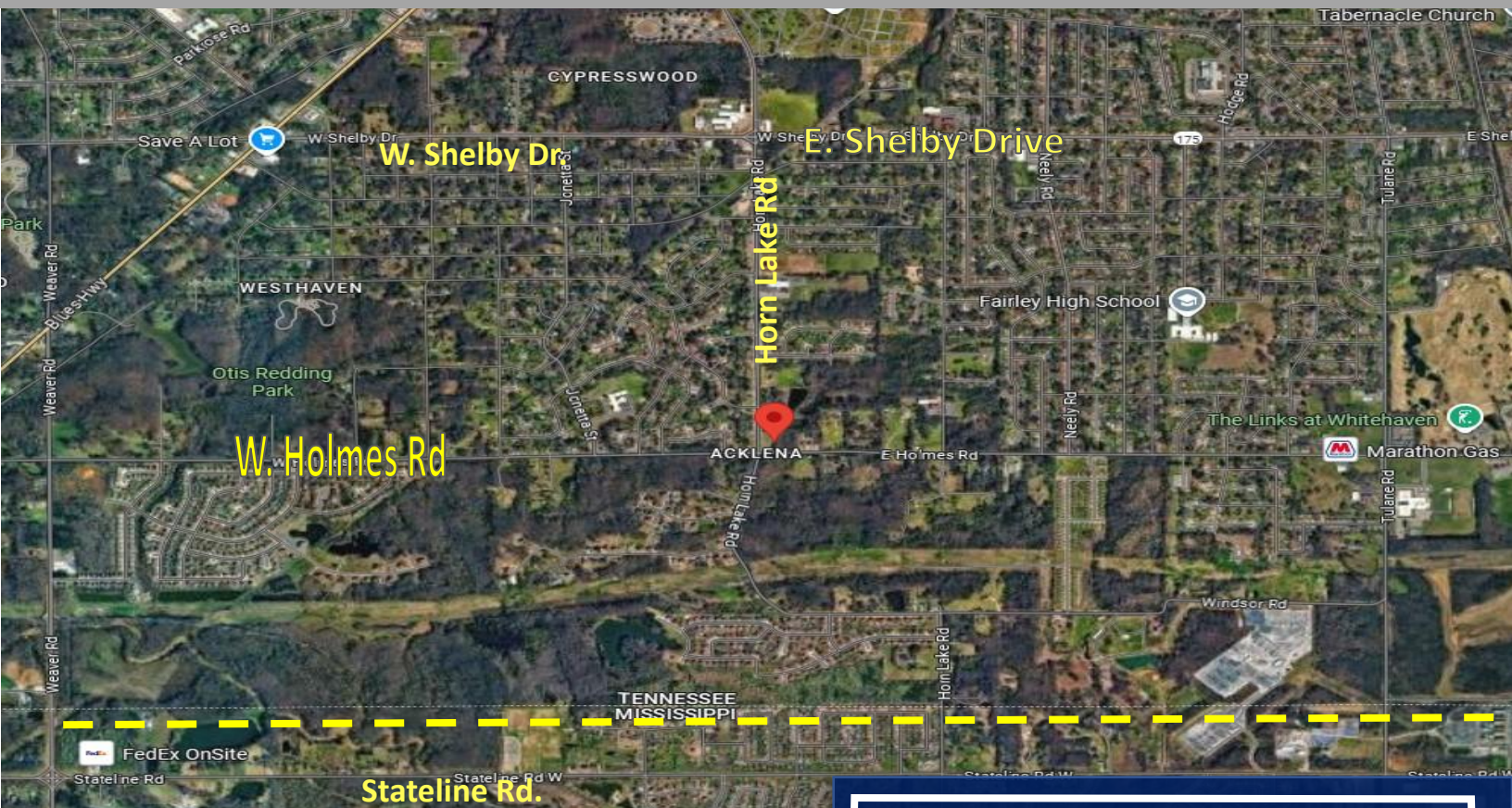


# FOR SALE

## Highly Visible Parcel

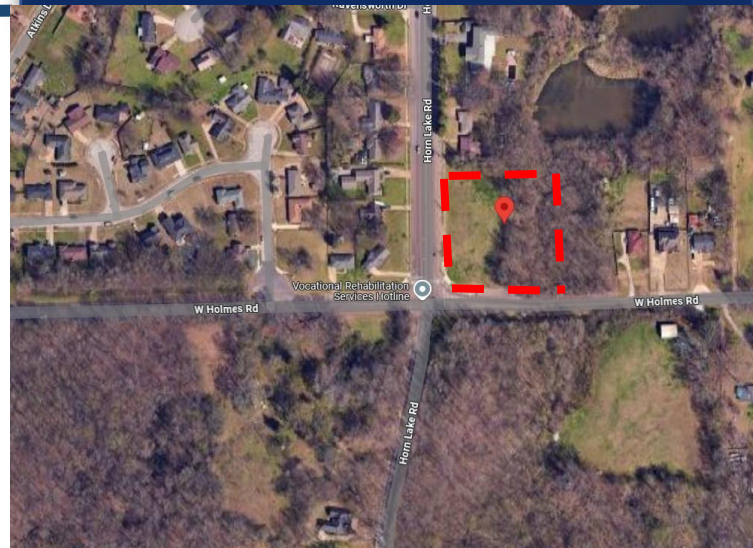


# \$400,000

**5168 Horn Lake Road  
Memphis, TN 38109**

## 2.38 Acres Available

- ❑ Stoplight Corner at Horn Lake and Holmes Road
- ❑ Well positioned for future growth
- ❑ Easy access to Memphis, Horn Lake, and Southaven



Disclaimer: All information contained herein is from sources deemed reliable; however, no representation or warranty is made to the accuracy of the information.



**Melanie Myers Bland**  
[melanie@myerscre.com](mailto:melanie@myerscre.com)  
901-761-5595 Office  
901-351-5595 Cell

773 E Brookhaven Circle  
Memphis, TN 38117

#288335 Licensed in TN  
#22327 Licensed in MS

**MYERS**  
COMMERCIAL REAL ESTATE