



1431 S. Bluffview

Wichita, Kansas 67218

Property Highlights

- Suite 102: 2,047 SF available
- Covered doctor parking
- Ample patient parking
- Tenant Improvements available
- On the Saint Joseph Hospital campus - 20,807 VPD
- Located off Harry Street, near numerous retailers, financial institutes, WSU Tech, Marriott International, Octapharma Plasma, & Dandurand Drugstore
- Lease Rate: \$17.00/SF | \$2,900/month - Full Service

Offering Summary

Lease Rate:	\$2,900 per month (Full Service)
Building Size:	26,579 SF
Available SF:	2,047 SF
Lot Size:	1.47 Acres

For More Information

Jayden Johnson

O: 316 348 3133
JJohnson@naimartens.com

Steven J. Martens, CCIM, SIOR

O: 316 847 4901
smartens@naimartens.com

BROCHURE

1431 S. Bluffview Drive, Wichita, KS 67218

NAI Martens

For Lease

Medical Office
2,047 SF
\$17.00/SF (FS)

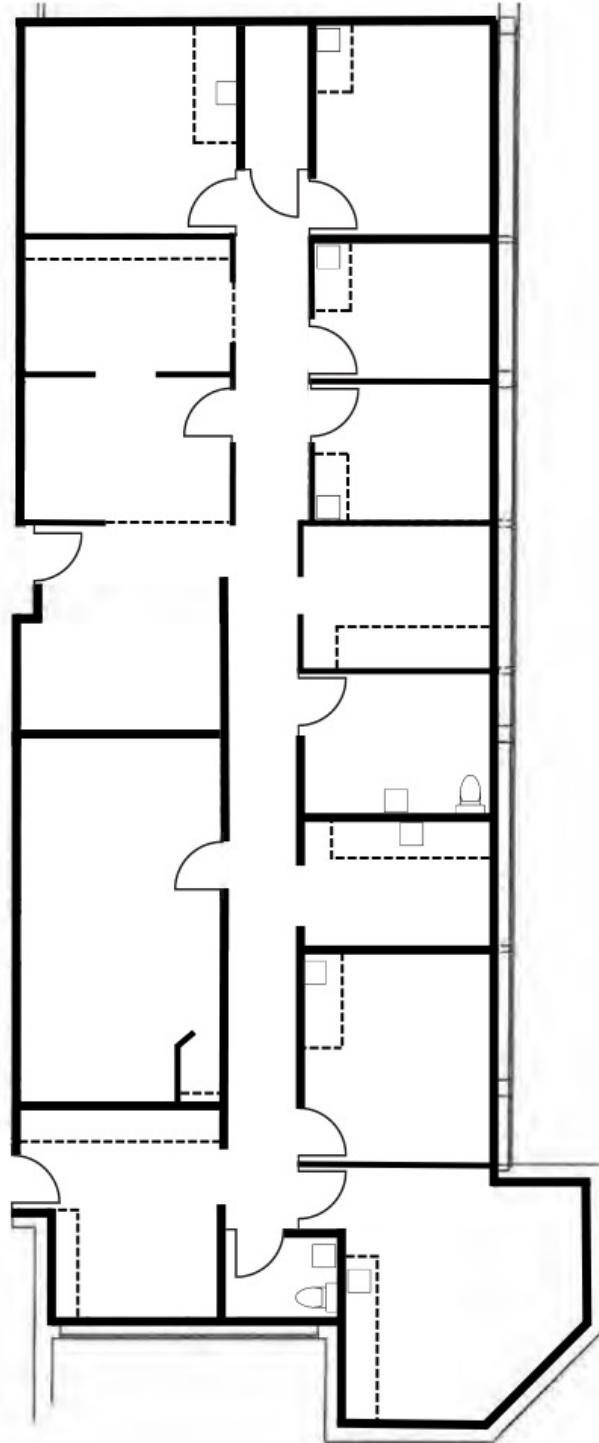


BROCHURE

1431 S. Bluffview Drive, Wichita, KS 67218

Independently Owned and Operated. The information contained herein was obtained from sources believed reliable; however, NAI Martens Company makes no guarantees, warranties or representations as to the completeness or accuracy thereof. The presentation of this property is submitted subject to errors, omissions, change of price or conditions prior to sale or lease, or withdrawal without notice.

**Suite 102
2,047 SF**

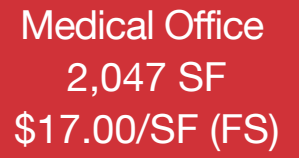


The logo for NAI Martens, featuring the letters 'NAI' in a bold, sans-serif font followed by 'Martens' in a slightly smaller, regular sans-serif font. The logo is positioned on a dark grey background with white L-shaped brackets above and below it.

NAIMartens

The text 'For Lease' is centered in a large, black, serif font. It is overlaid on a background image of modern skyscrapers reaching towards a blue sky with light clouds. Two horizontal blue lines cross the image behind the text.

For Lease

The property details are listed in a white, sans-serif font on a solid red background. The text is right-aligned.

Medical Office
2,047 SF
\$17.00/SF (FS)

BROCHURE

1431 S. Bluffview Drive, Wichita, KS 67218

Independently Owned and Operated. The information contained herein was obtained from sources believed reliable; however, NAI Martens Company makes no guarantees, warranties or representations as to the completeness or accuracy thereof. The presentation of this property is submitted subject to errors, omissions, change of price or conditions prior to sale or lease, or withdrawal without notice.