

# For Lease

## Powerline Park

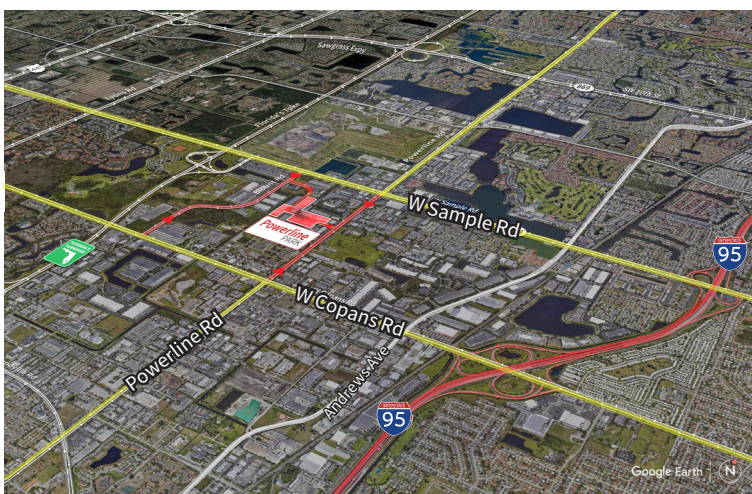
3000 NW 25<sup>th</sup> Avenue  
Pompano Beach, FL 33069



Industrial Space For Lease  
**2,970 SF**

### Powerline Park

3000 NW 25<sup>th</sup> Avenue, Suite 13, Pompano Beach, FL 33069



### Location

- Easy access off Sample Road and Powerline Road
- Excellent access to I-95 and the Florida Turnpike
- Equidistant to Fort Lauderdale/Hollywood International Airport and Palm Beach International Airport

### Space Features

- 2,970 SF total
- 410 SF of office
- 2,560 SF of warehouse
- 16' clear height
- One (1) grade level door
- Vacant
- Air-conditioned warehouse
- Parking ratio: 2.0/1,000 sf
- Available now



© 2023 Jones Lang LaSalle IP, Inc.

**Yuri Quispe**

D +1 954 233 3462

M +1 772 201 5305

yuri.quispe@jll.com

**Peter Sheridan**

D +1 954 653 3235

M +1 954 439 4941

peter.sheridan@jll.com

**Peter Johnston**

D +1 954 233 3429

M +1 954 980 3224

peter.johnston1@jll.com



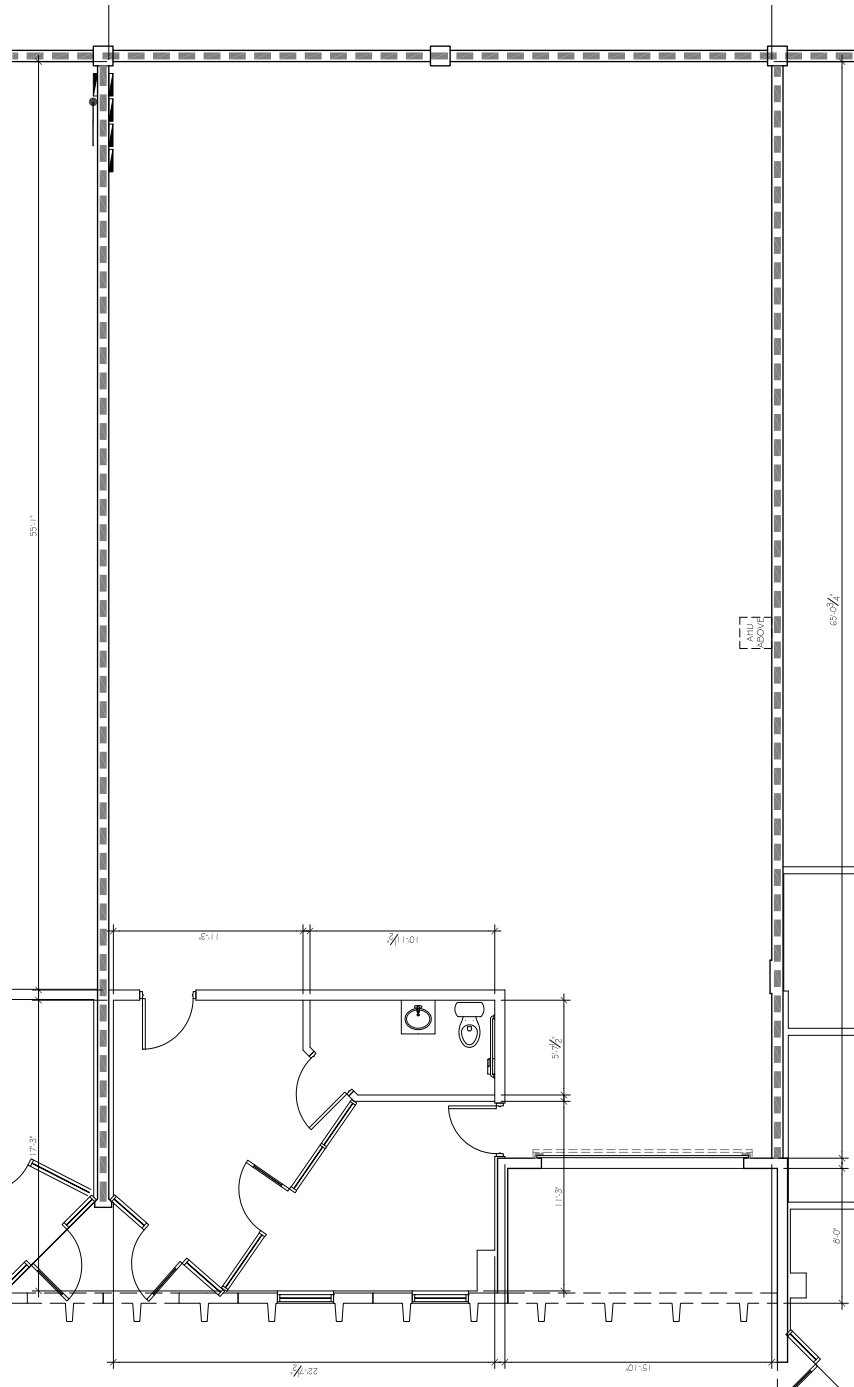
# For Lease

# Powerline Park

3000 NW 25<sup>th</sup> Avenue, Pompano Beach, FL 33069

## Powerline Park Dimensioned Floor Plan - Suite 13

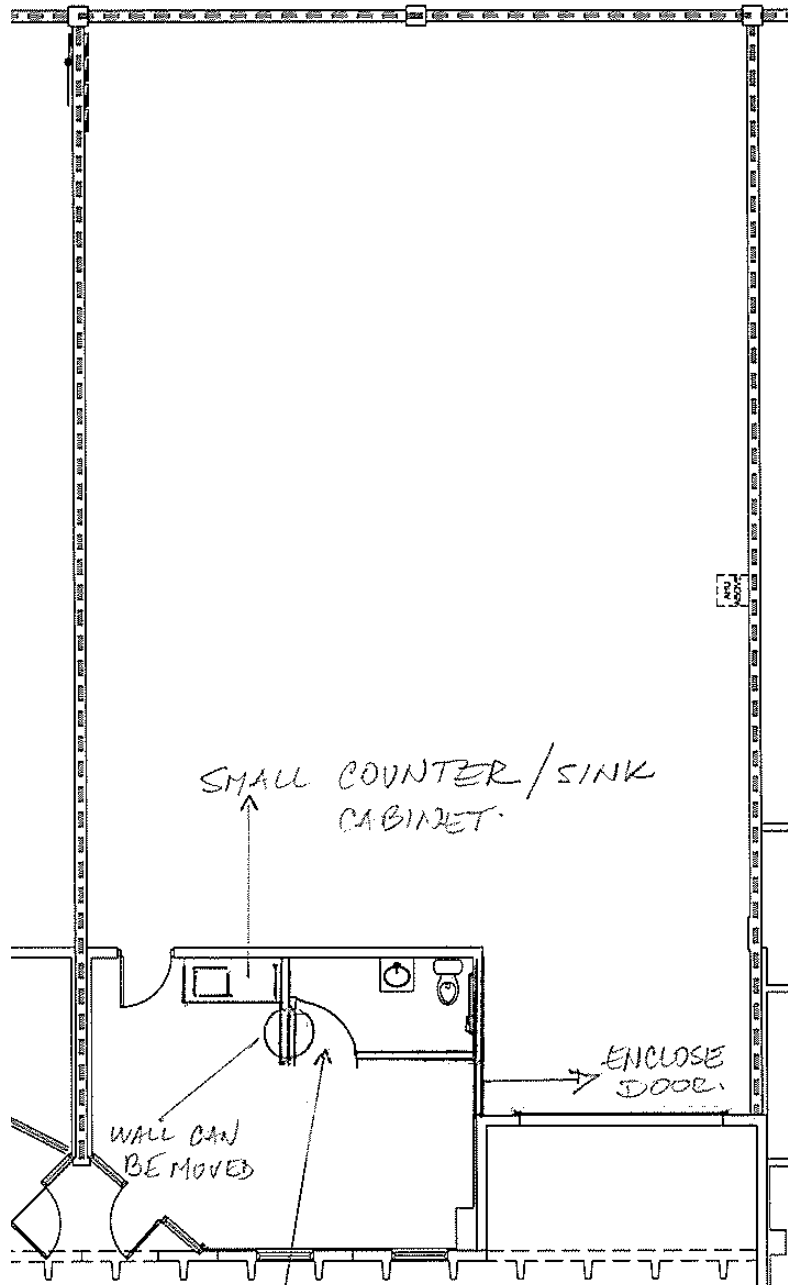
Total: 2,970 SF  
Office: 410 SF  
Warehouse: 2,560 SF



## Powerline Park

### Demo Floor Plan - Suite 13

Total: 2,970 SF  
Office: 410 SF  
Warehouse: 2,560 SF



## Powerline Park Site Plan

■ - Subject Property



Building	Suite	Total (SF)	Office (SF)	Warehouse (SF)	Loading	Clear Height	Available Date
6	13	2,970	410	2,560	1 G	16'	Now

