

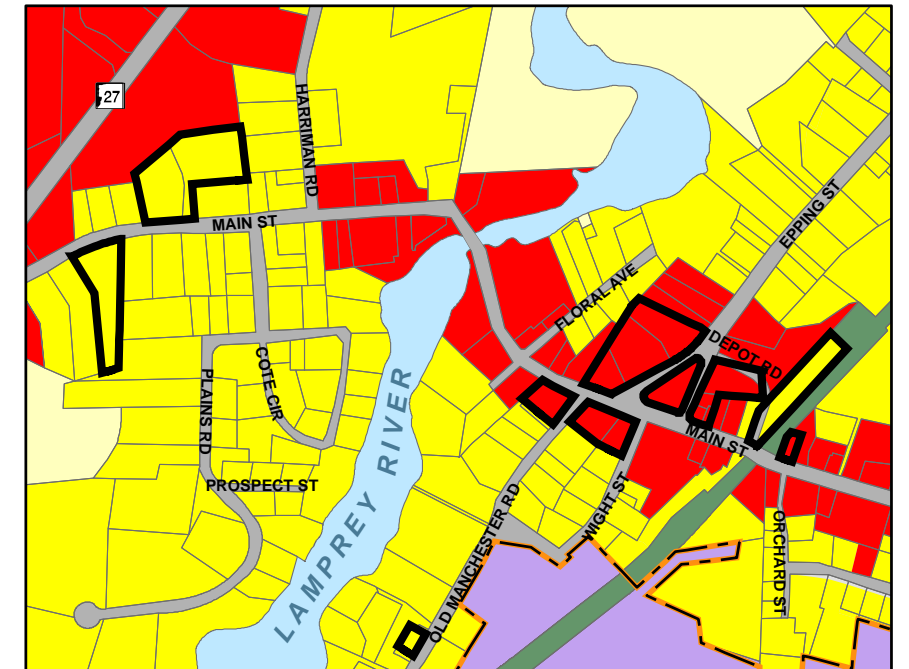


Town of Raymond

NEW HAMPSHIRE

OFFICIAL ZONING 2012 MAP A

Detailed View of the Downtown Area



Legend

- Water Bodies
- Water Courses
- Zoning
 - Residential (A)
 - Residential/Agricultural (B)
 - Commercial (C1)
 - Commercial/Residential (C2)
 - Commercial/Mixed Use (C3)
 - Industrial (D)
 - Manufactured Housing (E)
- Roads
- Rail Trail
- Paper Streets
- Parcels
- Overlay District
 - Overlay District
 - 500 Non-Residential Buffer
 - Sewer Overlay District
 - Conservation Development
 - Elderly Housing

This map was produced by the Rockingham Planning Commission for the Town of Raymond, New Hampshire January 8, 2004, Revised March 22, 2017

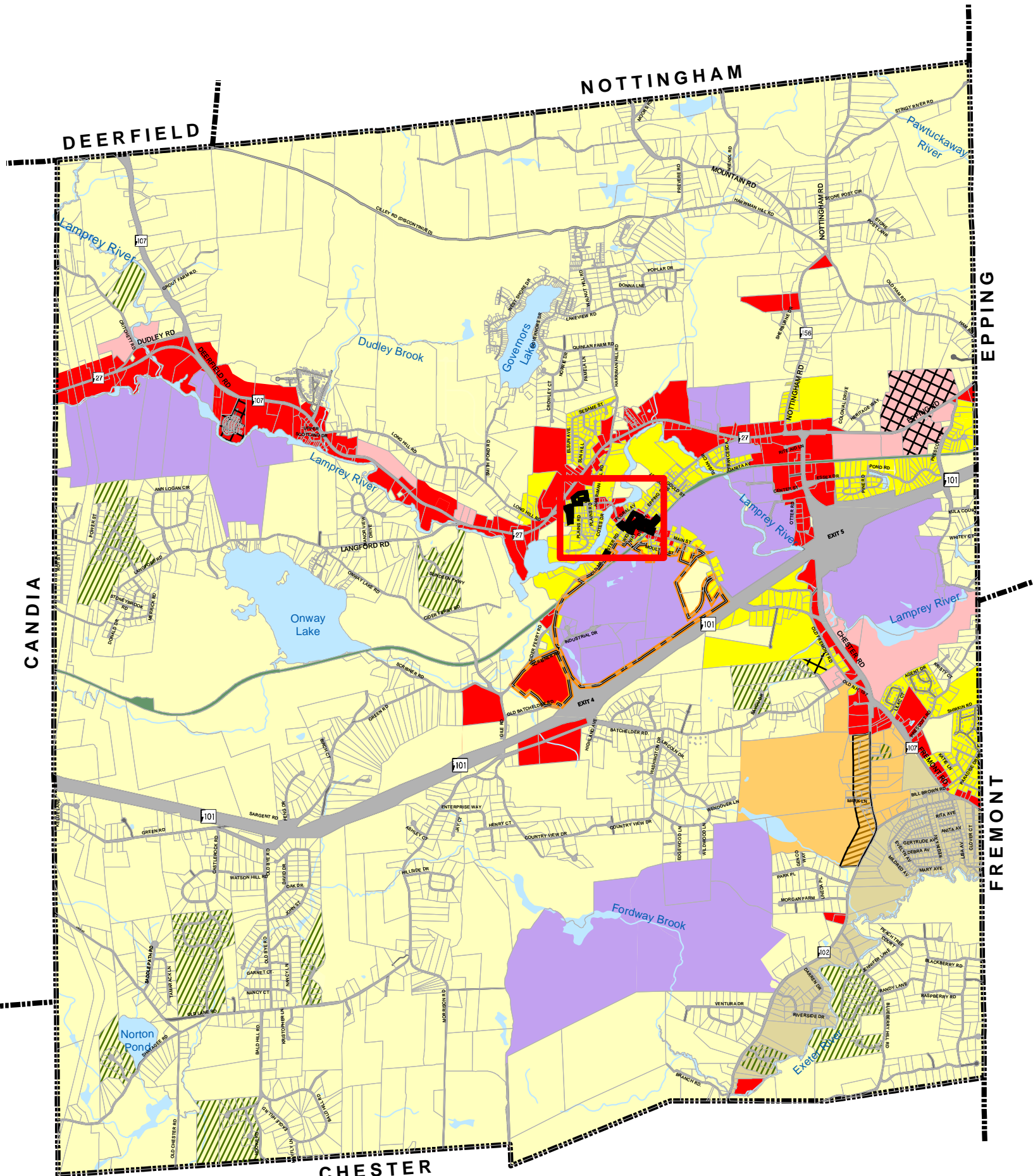
Contact: Raymond Planning at (603) 895-4735 x126

Data Sources: GRANIT Digital Data (1:24,000) NH Department of Transportation Town of Raymond Composite Tax Map Zoning Shapefile digitized by SNRPC, revised by RPC

The Town of Raymond and the RPC make no representations or guarantees to the accuracy of the features and designations of this map. All zoning boundaries are approximate.

This map is designed for planning purposes only and is not to be used for legal boundary determinations or for regulatory purposes.

This map does not, and is not intended to indicate the official status (acceptance by the Town) of streets and roads. This map was originally created by SNRPC and supplied to the RPC as a courtesy.



DATE OF ADOPTION: _____
Planning Board Chair Signature