

Industrial | For Sublease

CBRE

UNIT 104

173 Forester Street

North Vancouver, BC

2,290 SF in Dollarton Business Park



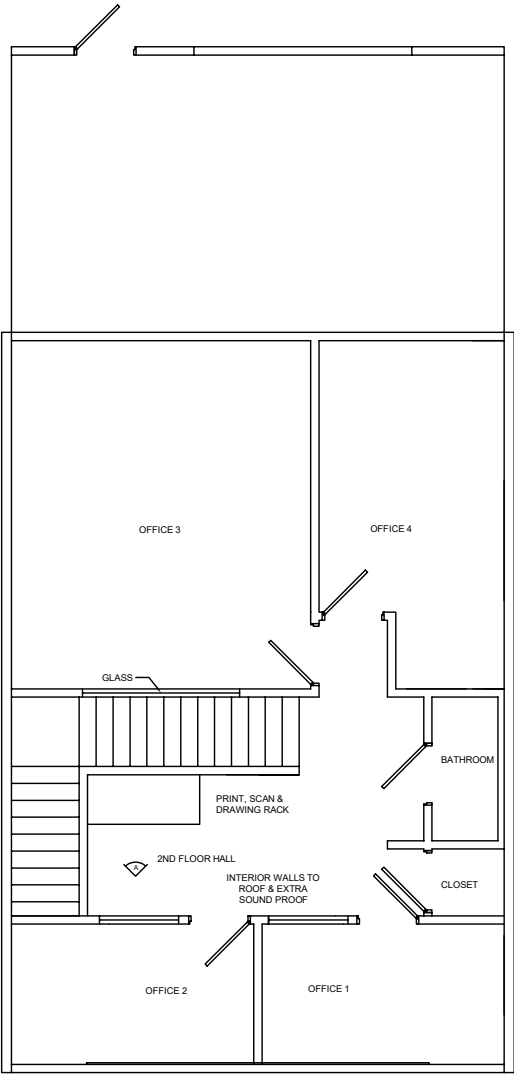
104 - 173 Forester Street
North Vancouver, BC

Property Details

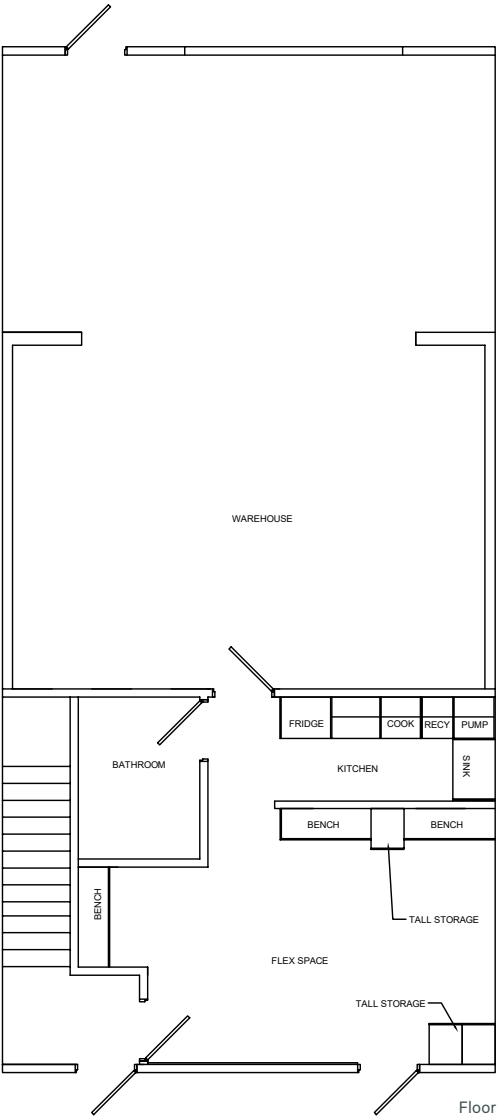
Unit Size	2,290 SF
Asking Rate	Contact Listing Agents
Additional Rent	\$9.22 PSF (2025 Estimate)
Zoning	CD33
Parking	2 Reserved Stalls + Loading Bay
Availability	60 - 90 Days

Building Highlights

- + 22' Clear ceiling height
- + 225 Amp 208/120 Volt 3 Phase
- + Shared boardroom
- + Shower and change room facilities
- + Bike storage



UPPER FLOOR PLAN



LOWER FLOOR PLAN



The Location

Dollarton Business Park is known for its mix of industrial and office spaces, offering a range of services and amenities for businesses. The park is well-connected to major transportation routes, including the Trans-Canada Highway and the Ironworkers Memorial Bridge, providing businesses with easy access to a large consumer base and a thriving business community. This site is also just a 15 minute walk from the Phibbs Exchange Bus Loop.



Contact

Shaun Bucke

Senior Associate
Industrial Properties
604 662 5121
shaun.bucke@cbre.com

Daniel McGauley

Personal Real Estate Corporation
Senior Vice President
Industrial Properties
604 662 5186
daniel.mcgaleay@cbre.com

Justin Fisher

Personal Real Estate Corporation
Vice President
Industrial Properties
604 662 5150
justin.fisher@cbre.com

This disclaimer shall apply to CBRE Limited, Real Estate Brokerage, and to all other divisions of the Corporation; to include all employees and independent contractors ("CBRE"). The information set out herein, including, without limitation, any projections, images, opinions, assumptions and estimates obtained from third parties (the "Information") has not been verified by CBRE, and CBRE does not represent, warrant or guarantee the accuracy, correctness and completeness of the Information. CBRE does not accept or assume any responsibility or liability, direct or consequential, for the Information or the recipient's reliance upon the Information. The recipient of the Information should take such steps as the recipient may deem necessary to verify the Information prior to placing any reliance upon the Information. The Information may change and any property described in the Information may be withdrawn from the market at any time without notice or obligation to the recipient from CBRE. CBRE and the CBRE logo are the service marks of CBRE Limited and/or its affiliated or related companies in other countries. All other marks displayed on this document are the property of their respective owners. All Rights Reserved. Mapping Sources: Canadian Mapping Services canadamapping@cbre.com; DMTI Spatial, Envirionics Analytics, Microsoft Bing, Google Earth.