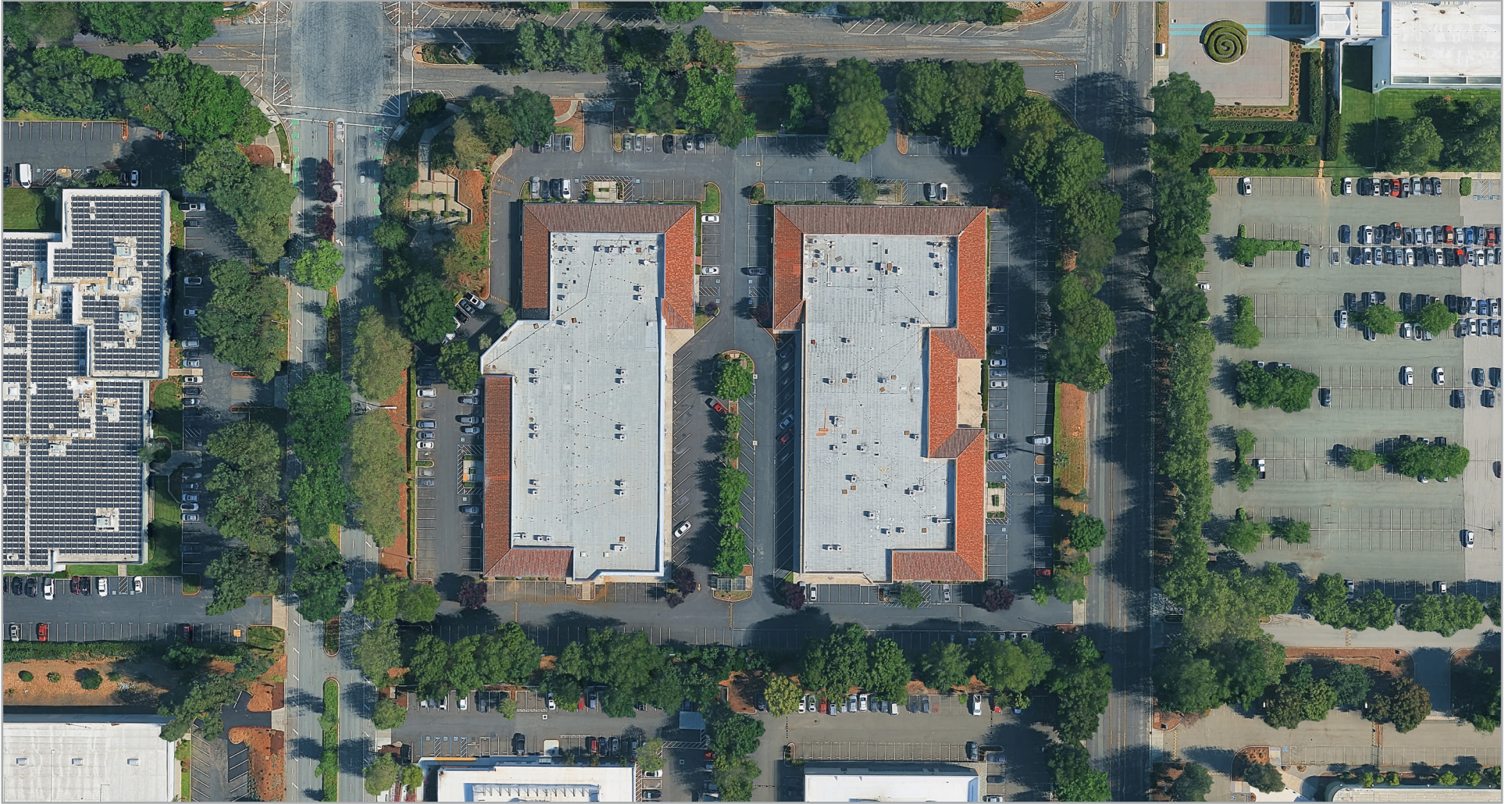


COMMERCIAL KITCHEN FOR SALE

2050 CONCOURSE DRIVE, #12, #16 & #20 | SAN JOSE, CA



EXCLUSIVE AGENTS:

Garrett Drew, Principal

E \\ gdrew@lee-associates.com

P \\ 510.903.7613 | LIC# 01923730

Patrick O'Brien, Principal

E \\ pobrien@lee-associates.com

P \\ 510.907.3023 | LIC# 02086133

Lee & Associates Oakland Commercial Real Estate \ 555 12th Street, Suite 1725, Oakland, CA 94607 \ www.lee-associates.com

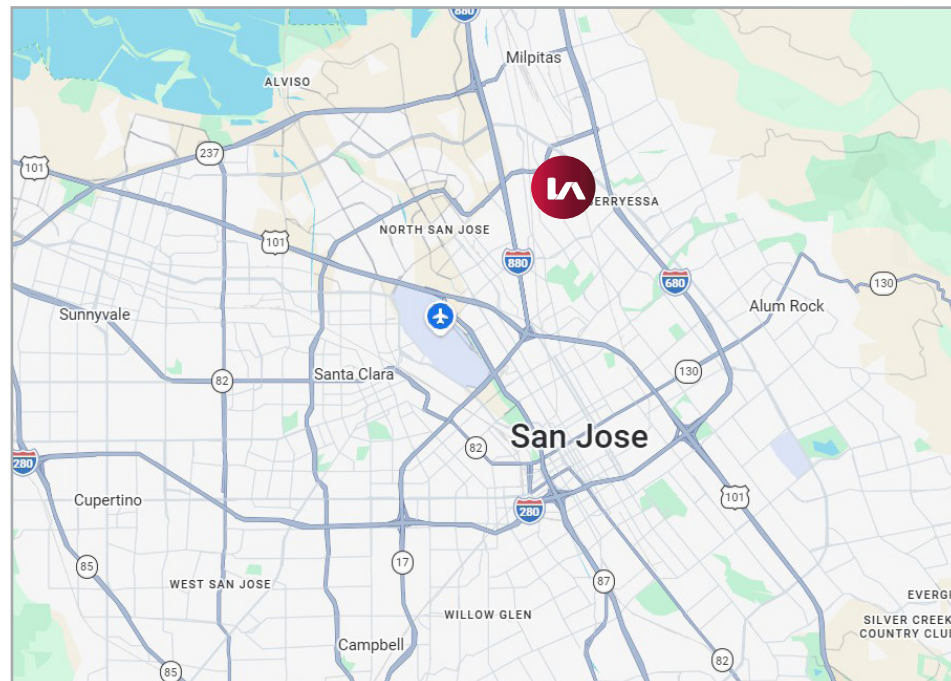
All information furnished regarding property for sale, rental or financing is from sources deemed reliable, but no warranty or representation is made to the accuracy thereof and same is submitted to errors, omissions, change of price, rental or other conditions prior to sale, lease or financing or withdrawal without notice. No liability of any kind is to be imposed on the broker herein.

COMMERCIAL KITCHEN FOR SALE

2050 CONCOURSE DRIVE, #12, #16 & #20 | SAN JOSE, CA

FEATURES:

- 3,312± SF Commercial Kitchen
- 646± SF Admin Office
- 1,300± SF Food Prep / Packaging
- Fully Turn-Key Kitchen Including:
 - 8 Floor Burner Stoves
 - 1 Tilt Skillet
 - 3 Warm Holds
 - 2 Cold Holds
 - Ice Maker
 - Walk-in Cooler
 - Walk-in Freezer
 - 20' Long Hood w/ Permit Approval for 20' Expansion
 - Floor Drains
- Asking Price: \$2,200,000



COMMERCIAL KITCHEN FOR SALE

2050 CONCOURSE DRIVE, #12, #16 & #20 | SAN JOSE, CA



Lee & Associates Oakland Commercial Real Estate \ 555 12th Street, Suite 1725, Oakland, CA 94607 \ www.lee-associates.com

All information furnished regarding property for sale, rental or financing is from sources deemed reliable, but no warranty or representation is made to the accuracy thereof and same is submitted to errors, omissions, change of price, rental or other conditions prior to sale, lease or financing or withdrawal without notice. No liability of any kind is to be imposed on the broker herein.