

9631 Irvine Center Drive

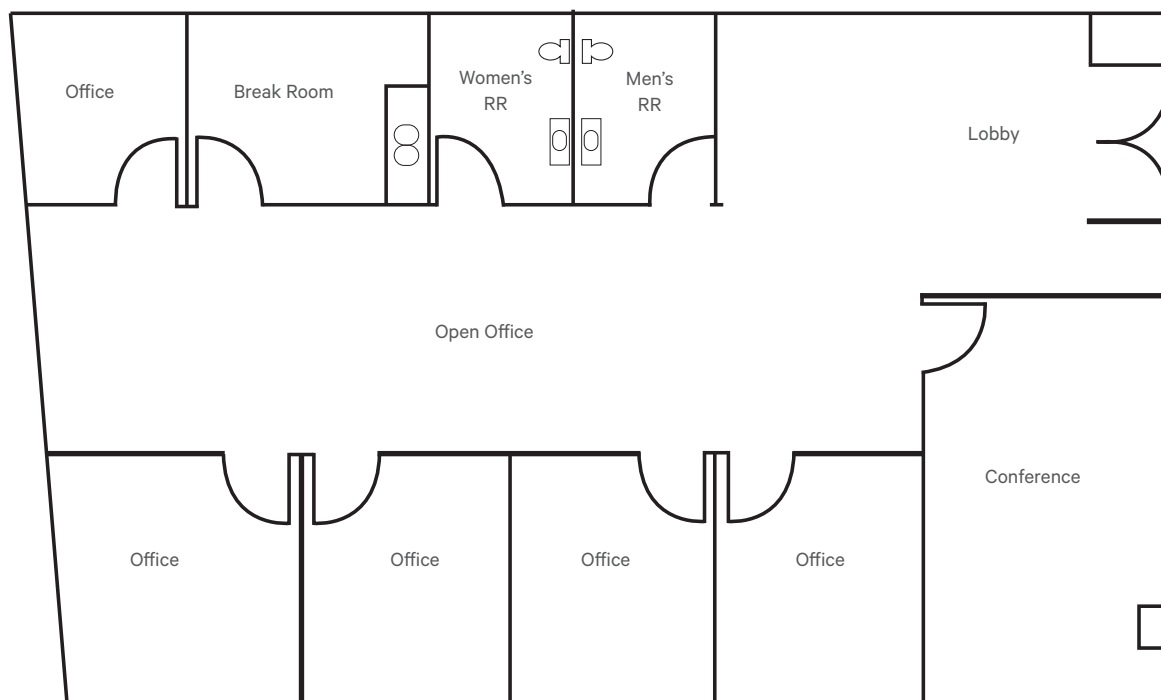
Irvine Spectrum



Property Features

- + ±2,050 SF Single-Story Office
- + Four (4) Private Window Offices
- + Corner Unit
- + Conference Room, Break Room, IT/Workroom, Private Restrooms & Open Area
- + Ideal Space for Design Professionals or R&D Development Services
- + 4:1 Parking Ratio (including 2 reserved)
- + Located in the Koll II Projects
- + Close proximity to the Irvine Spectrum Center, Southern California's most popular entertainment and shopping destination
- + Excellent freeway access - less than 2 miles from I-5 and I-405 freeway
- + Available Now !

Floor Plan



Contact Us

Tyler Haly

Vice President

+1 949 725 8486

tyler.haly@cbre.com

Lic. 01944023

© 2024 CBRE, Inc. All rights reserved. This information has been obtained from sources believed reliable, but has not been verified for accuracy or completeness. You should conduct a careful, independent investigation of the property and verify all information. Any reliance on this information is solely at your own risk. CBRE and the CBRE logo are service marks of CBRE, Inc. All other marks displayed on this document are the property of their respective owners, and the use of such logos does not imply any affiliation with or endorsement of CBRE. Photos herein are the property of their respective owners. Use of these images without the express written consent of the owner is prohibited.