

# 2220/2240

## DOUGLAS BOULEVARD

ROSEVILLE | CALIFORNIA

YOUR NAME HERE

### QUALITY OFFICE SPACE - PRIME LOCATION

**NEWMARK**



Pappas Investments

**CHRIS LEMMON**

t 916-367-6349  
chris.lemmon@nmrk.com  
CA RE Lic# 01506816

**TOM HEACOX**

t 916-569-2315  
tom.heacox@nmrk.com  
CA RE Lic# 00913198

**MATT HEACOX**

t 916-569-2314  
matt.heacox@nmrk.com  
CA RE Lic# 01451720



## 2220/2240 DOUGLAS BOULEVARD



2220  
Douglas Blvd.

2240  
Douglas Blvd.  
Douglas Blvd. (43,306 AADT)

Eureka Rd. (21,071 AADT)

# LOCATION AERIAL



## 2220/2240 DOUGLAS BOULEVARD

# PROPERTY HIGHLIGHTS

### 2220 DOUGLAS

Suite 280: ±3,932 RSF

### 2240 DOUGLAS

Suite 210: ±4,988 RSF (Divisible)

Suite 250: ±2,554 RSF (Plug & Play)

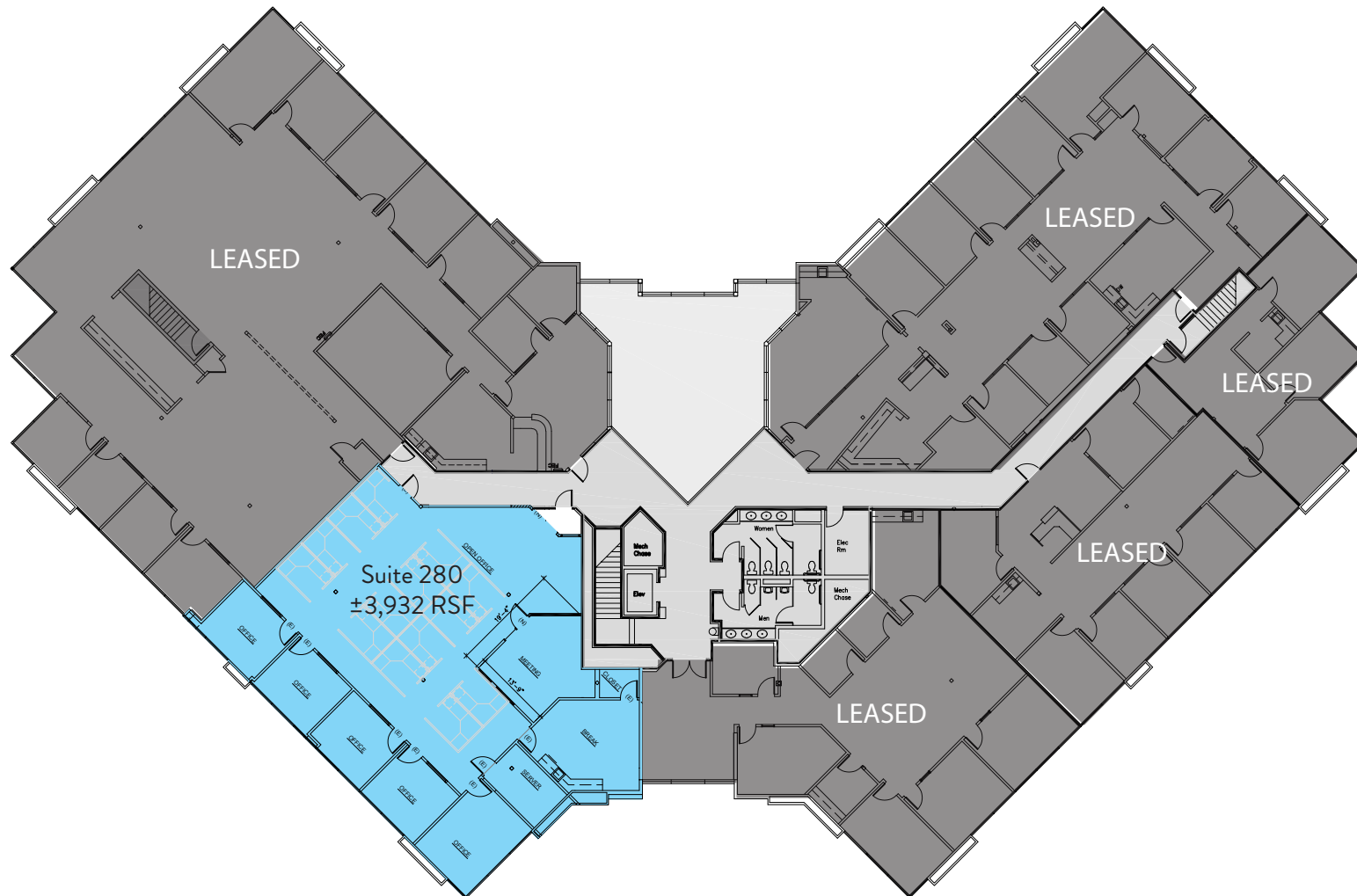
Suite 290: ±3,552 RSF

- Achieved LEED EB Gold Certification in 2010
- Energy efficient solar panels on the rooftop
- Energy Star rated building
- Building & monument signage is available
- Existing shared conference room, with a new, larger conference facility planned in 2025
- Full service deli & outdoor dining area at 2240 Douglas Boulevard
- Full-time staffed property management office on-site
- Strong locally based building ownership
- Attentive building engineers and daily porter services
- Convenient access to an abundance of retail establishments – restaurants, QSR, shopping & lodging
- Fiber ready building
- Abundant free parking



# FLOORPLAN

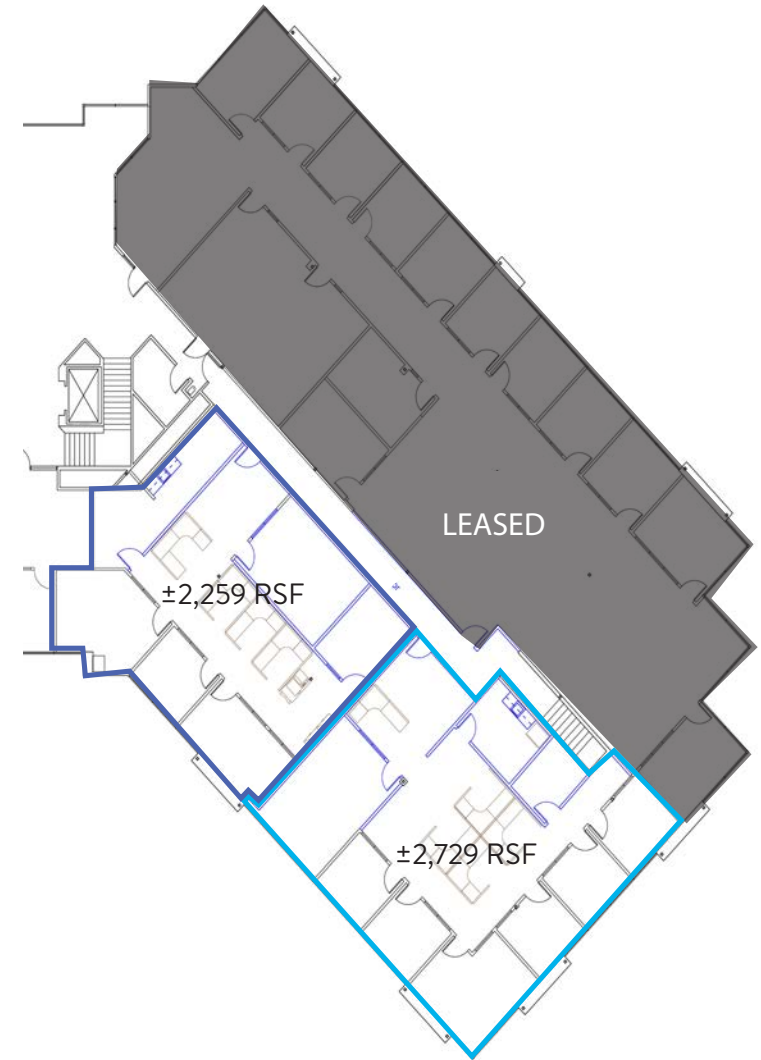
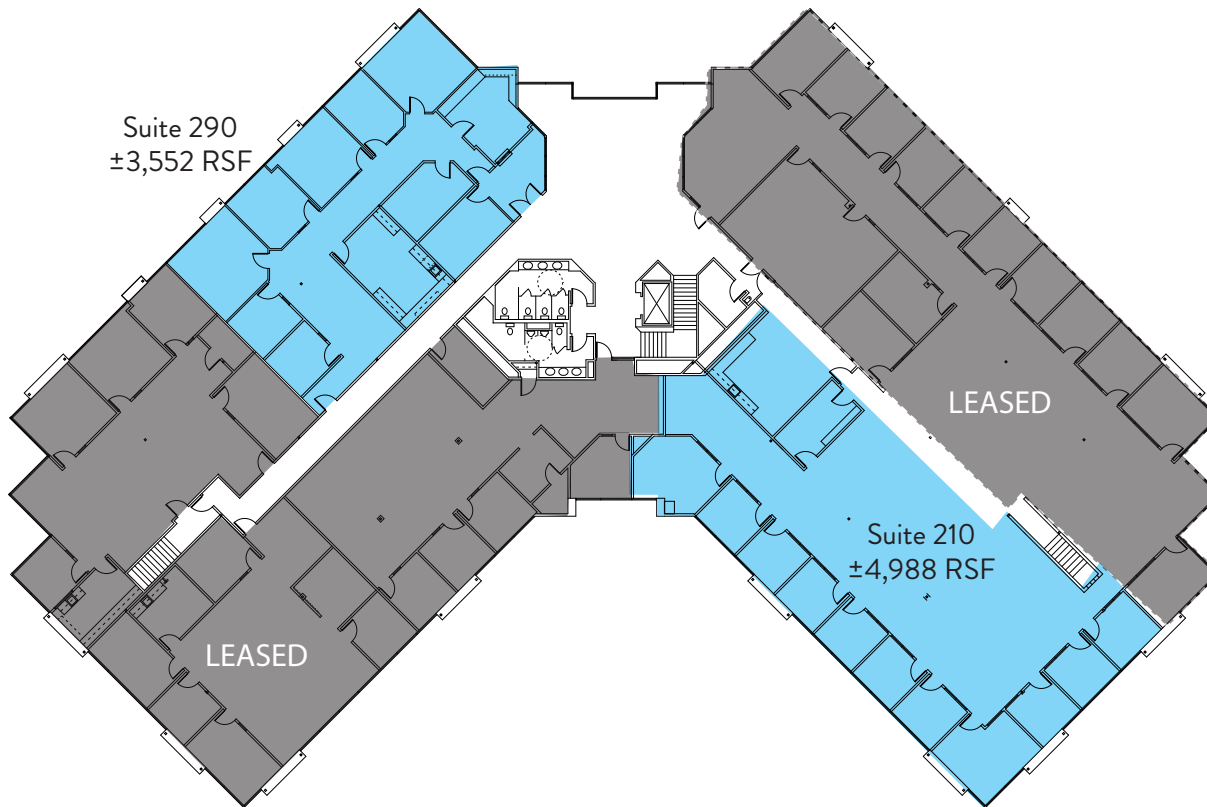
Suite 280:  $\pm 3,932$  RSF  
Second Floor



# FLOORPLAN

Suite 210:  $\pm 4,988$  RSF

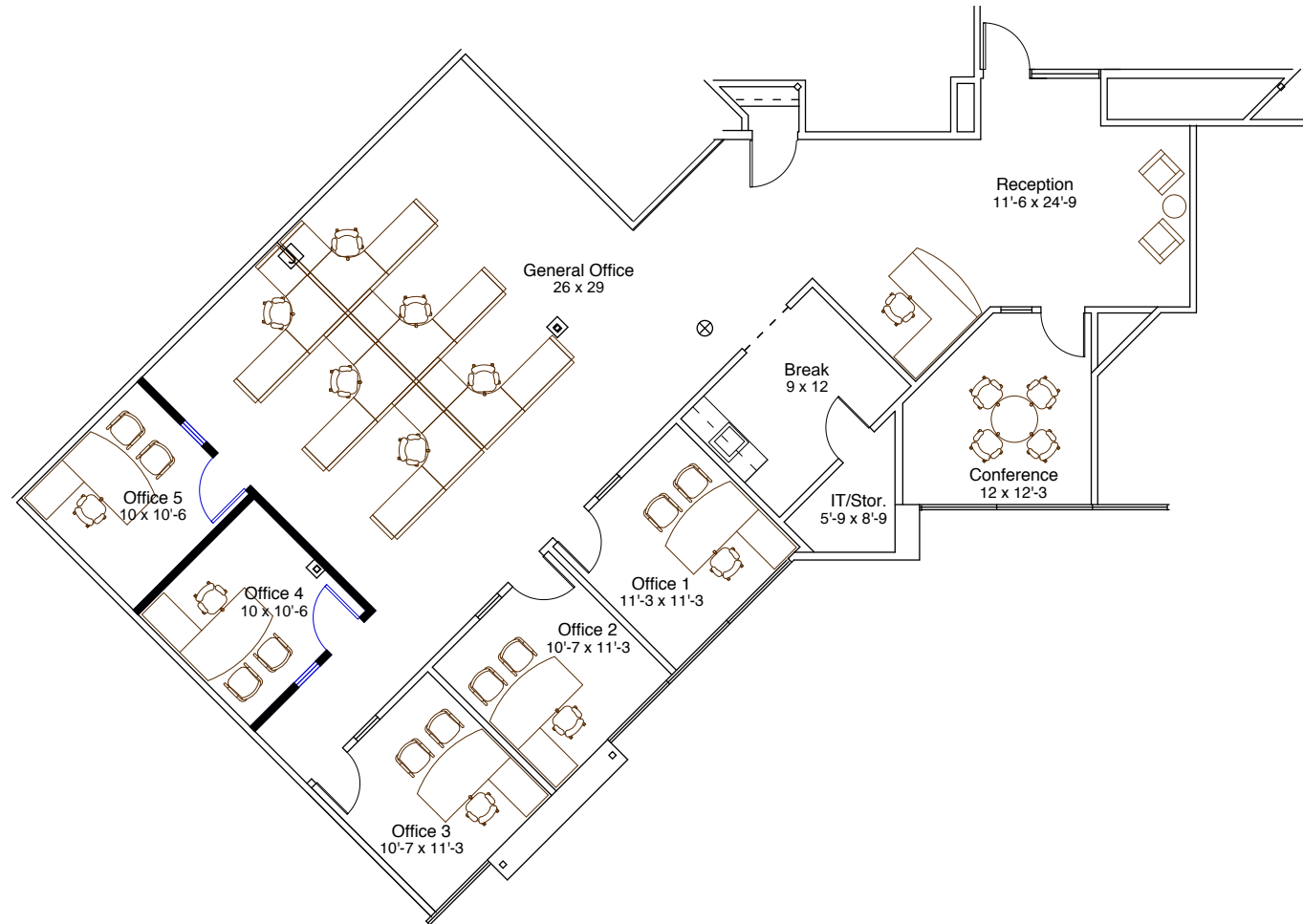
Suite 290:  $\pm 3,552$  RSF



Suite 210  
Conceptual Demising Plan

# FLOORPLAN

Suite 250: ±2,554 RSF  
*PLUG & PLAY*







# NEARBY RETAIL & LODGING



# 2220/2240

## DOUGLAS BOULEVARD

ROSEVILLE | CALIFORNIA



The distributor of this communication is performing acts for which a real estate license is required. The information contained herein has been obtained from sources deemed reliable but has not been verified and no guarantee, warranty or representation, either express or implied, is made with respect to such information. Terms of sale or lease and availability are subject to change or withdrawal without notice. MP-495 | 12/25

**NEWMARK**



Pappas Investments

**CHRIS LEMMON**

t 916-367-6349  
chris.lemmon@nmrk.com  
CA RE Lic# 01506816

**TOM HEACOX**

t 916-569-2315  
tom.heacox@nmrk.com  
CA RE Lic# 00913198

**MATT HEACOX**

t 916-569-2314  
matt.heacox@nmrk.com  
CA RE Lic# 01451720