

No.	Revisions	Date

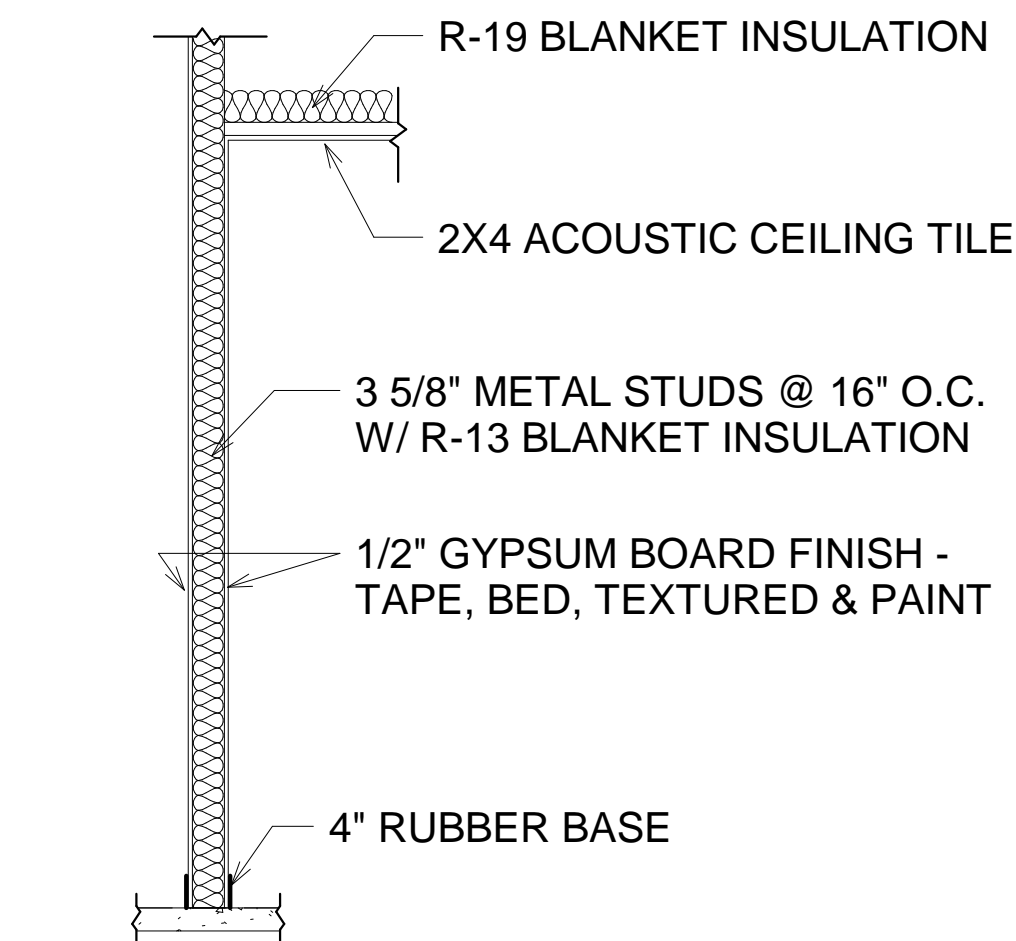
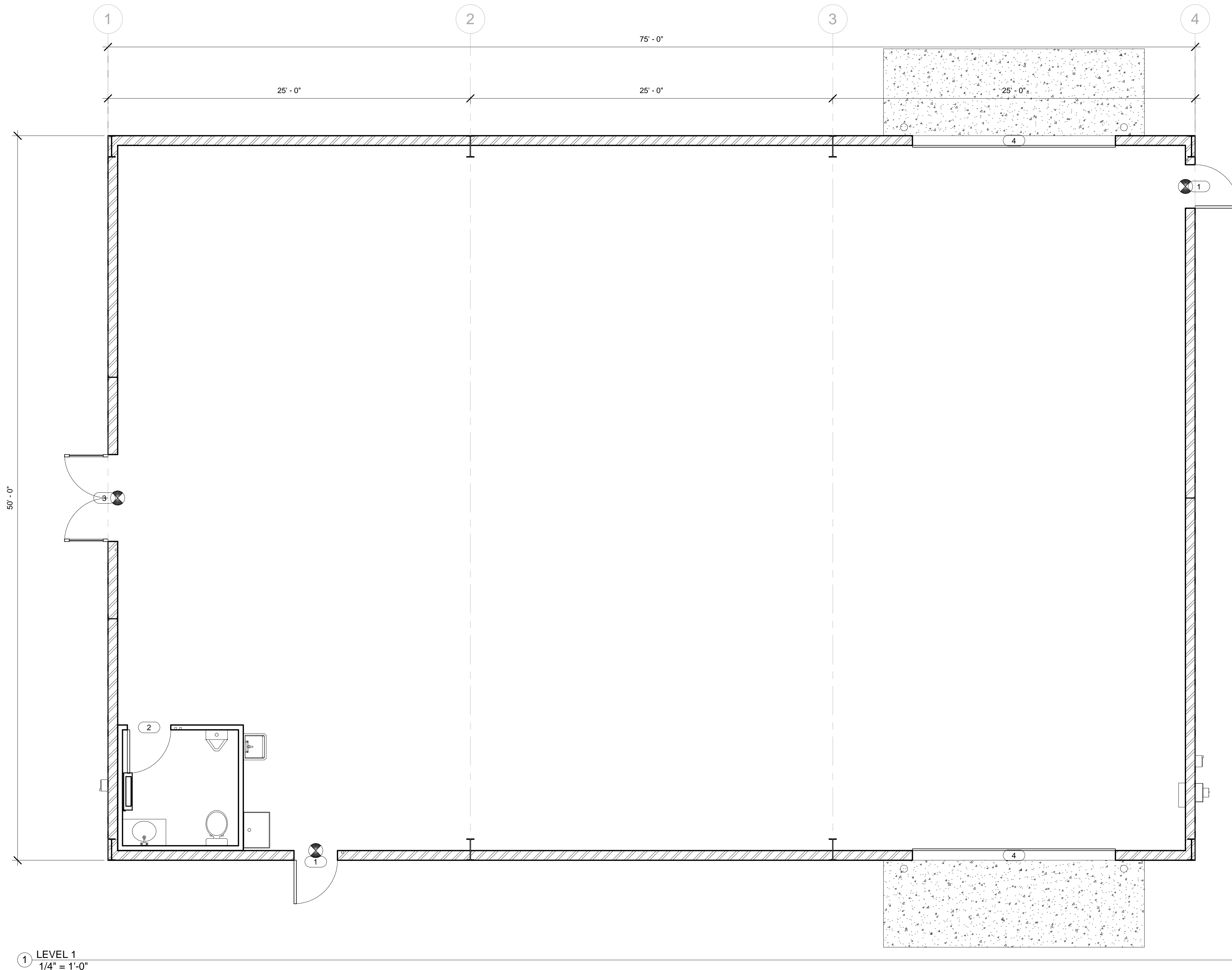
FIRST KEYSTONE INDUSTRIAL PARK

PECOS, TX
FLOOR PLAN

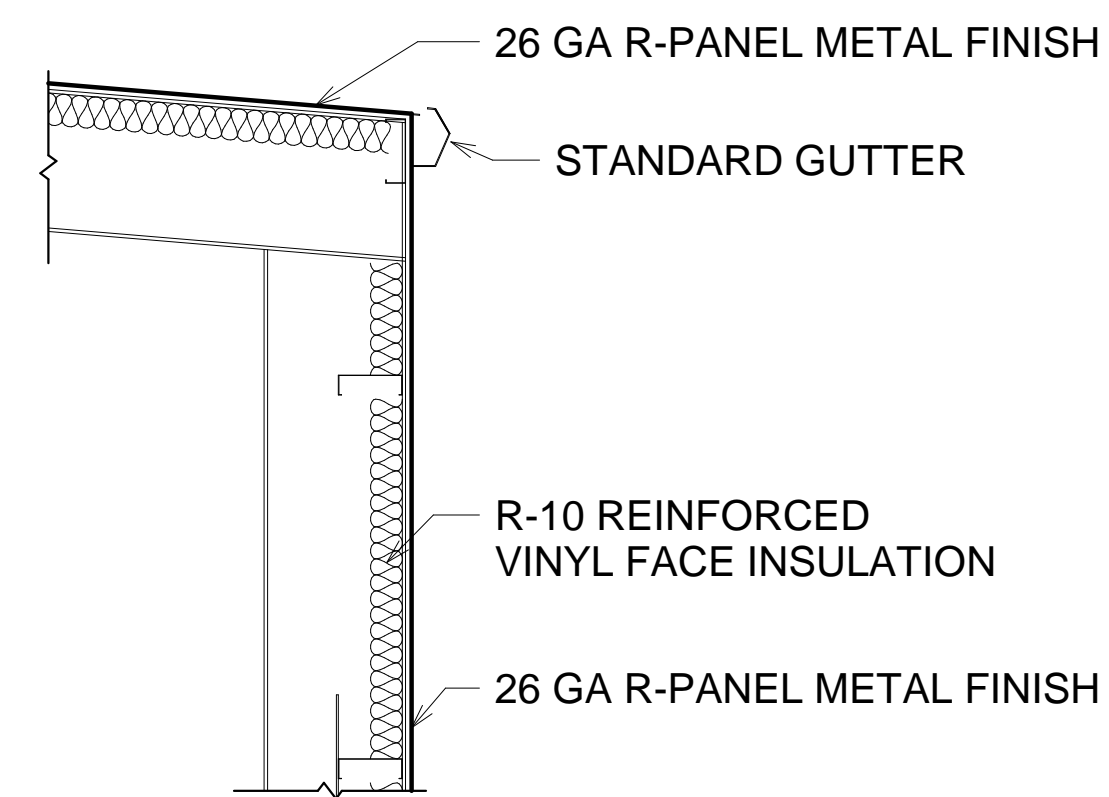
Project number	-
Date	10/26/18
Drawn by	RP
Checked by	RF

A101

Scale	As indicated
11/13/2018 10:30:44 AM	



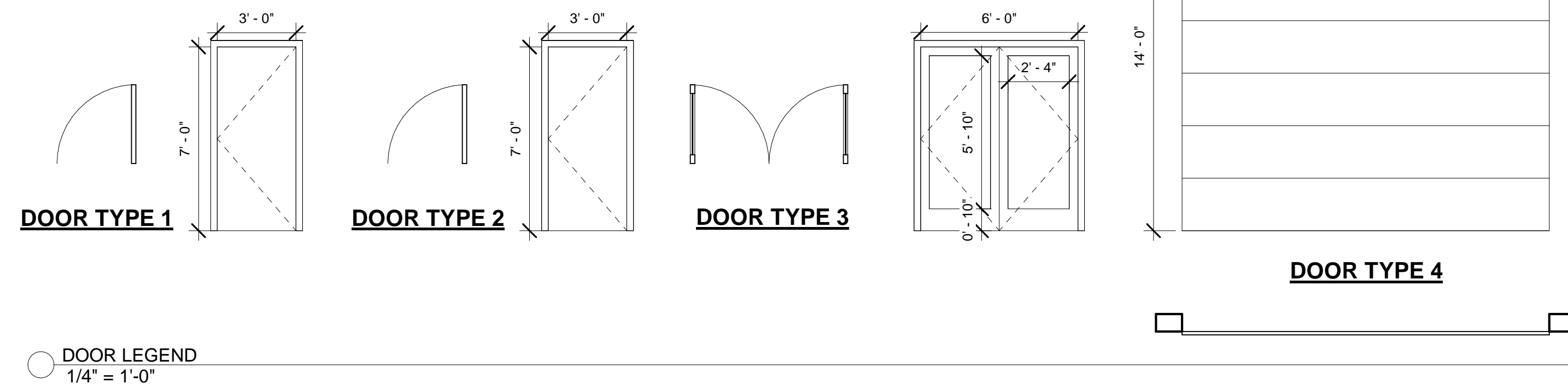
2 TYPICAL INTERIOR 4" PARTITION WALL
 1/2" = 1'-0"



3 TYPICAL EXTERIOR 8" METAL WALL
 1/2" = 1'-0"

1 LEVEL 1
 1/4" = 1'-0"

DOOR SCHEDULE							
MARK	QUANTITY	SIZE		CONSTRUCTION TYPE	FINISH	FRAME MATERIAL	COMMENTS
		WIDTH	HEIGHT				
1	2	3' - 0"	7' - 0"	INSULATED METAL	PRIMER	STEEL	
2	1	3' - 0"	7' - 0"	SOLID WOOD CORE	PRIMER	STEEL	
3	1	6' - 0"	7' - 0"	TEMPERED LOW-E BRONZE GLASS	-	ALUMINUM	
4	2	14' - 0"	14' - 0"	INSULATED STEEL BACK SECTIONAL	PAINT	STEEL	



DOOR LEGEND
 1/4" = 1'-0"