

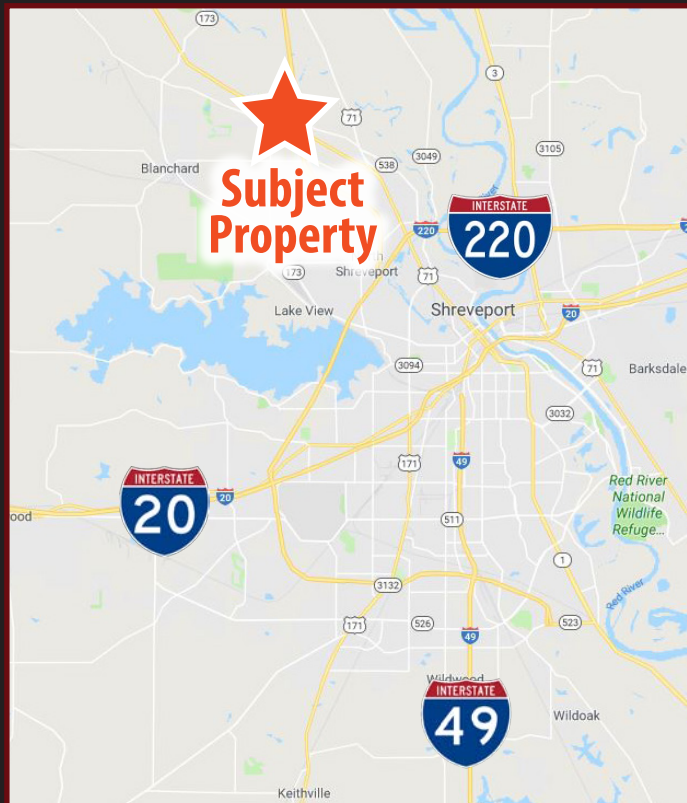


# 16,675 SF RETAIL/ FLEX BUILDING

## FOR LEASE

5907 OLD MOORINGSPORT ROAD, SHREVEPORT, LA 71107

- Former Fred's available for lease in Blanchard, LA
- 16,675 SF (145' x 115') built in 2013
- 1.55 acres with 50 parking spaces
- Truck well with 750+/- SF shipping/receiving area
- 17'-18' ceiling heights/fully sprinklered
- Located in Blanchard, LA (6 miles North of Shreveport, CBD)
- Less than 1 mile North of exit at I-49 and LA Hwy 1
- \$7.55 PSF/NNN



For more information, contact:

**G. Archer Frierson III, CCIM, SIOR | 318.222.2244**

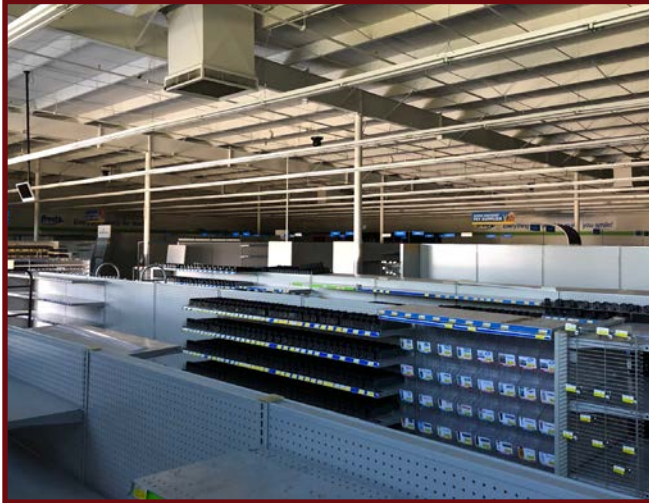
**gfrierson@vintagerealty.com | vintagerealty.com**

ALL INFORMATION CONTAINED HEREIN IS BELIEVED TO BE ACCURATE, BUT IS NOT WARRANTED AND NO LIABILITY OF ERRORS OR OMISSIONS IS ASSURED BY EITHER THE PROPERTY OWNER OR VINTAGE REALTY COMPANY OR ITS AGENTS AND EMPLOYEES. PRICES AS STATED HEREIN AND PRODUCT AVAILABILITY IS SUBJECT TO CHANGE AND/OR SALE OR LEASE WITHOUT PRIOR NOTICE, AND ALL SIZES AND DIMENSIONS ARE SUBJECT TO CORRECTION. REV 12/2019



# 16,675 SF RETAIL/FLEX BUILDING FOR LEASE

5907 OLD MOORINGSPORT ROAD  
SHREVEPORT, LA 71107



For More Information Contact:

**G. Archer Frierson III, CCIM, SIOR | 318.222.2244**  
**[gfrierson@vintagerealty.com](mailto:gfrierson@vintagerealty.com) | [vintagerealty.com](http://vintagerealty.com)**

ALL INFORMATION CONTAINED HEREIN IS BELIEVED TO BE ACCURATE, BUT IS NOT WARRANTED AND NO LIABILITY OF ERRORS OR OMISSIONS IS ASSURED BY EITHER THE PROPERTY OWNER OR VINTAGE REALTY COMPANY OR ITS AGENTS AND EMPLOYEES. PRICES AS STATED HEREIN AND PRODUCT AVAILABILITY IS SUBJECT TO CHANGE AND/OR SALE OR LEASE WITHOUT PRIOR NOTICE, AND ALL SIZES AND DIMENSIONS ARE SUBJECT TO CORRECTION. 12/2019