



1291 LOS ANGELES ST.

GLENDALE, CA 91204

OFFICE SUITE FOR LEASE



MIKE MANISCALCHI, SIOR | C: 818.427.9934 | CalDRE #01097943 | mike@systemsrealestate.com

TONY MANISCALCHI, SIOR | C: 818.606.8606 | CalDRE #00630926 | tonymaniscalchi@gmail.com

ERIC DICKENS | Broker Associate | C: 818.488.4792 | CalDRE #02084284 | dickens@systemsrealestate.com



SYSTEMS REAL ESTATE
MANAGEMENT, INC.
SALES • LEASING • MANAGEMENT

SYSTEMS REAL ESTATE MANAGEMENT, INC. | 700 N. BRAND BLVD., SUITE 260, GLENDALE, CA 91203 | DRE# 01875861 | 818.500.4900 | SYSTEMSREALESTATE.COM



1291 LOS ANGELES ST.

GLENDALE, CA 91204



OFFERING SUMMARY

Lease Rate: \$2.15 SF/month (MG)
\$3,460.00

Available SF: 1,608 SF

Utilities: Lessee pays pro rated
electrical & water

Building Size: P.O.L.

Term: 24 Months

Power: 100 Amps. | Three-
Phase

PROPERTY OVERVIEW

Rare, small inexpensive office space. Clean, quiet and ready for occupancy.

PROPERTY HIGHLIGHTS

All information provided herein (including but not limited to square footage calculations and zoning) together with any projections or other data has been furnished from sources which we deem reliable, but for which we assume no liability, expressed or implied. Interested parties (including but not limited to buyer or tenant) to conduct independent investigation of all information and to verify all information. The information provided herein is for reference only and is not deemed to be conclusive.

MIKE MANISCALCHI, SIOR | C: 818.427.9934 | CalDRE #01097943 | mike@systemsrealestate.com

TONY MANISCALCHI, SIOR | C: 818.606.8606 | CalDRE #00630926 | tonymaniscalchi@gmail.com

ERIC DICKENS | Broker Associate | C: 818.488.4792 | CalDRE #02084284 | dickens@systemsrealestate.com



SYSTEMS REAL ESTATE
MANAGEMENT, INC.
SALES • LEASING • MANAGEMENT



1291 LOS ANGELES ST.

GLENDALE, CA 91204



MIKE MANISCALCHI, SIOR | C: 818.427.9934 | CalDRE #01097943 | mike@systemsrealestate.com

TONY MANISCALCHI, SIOR | C: 818.606.8606 | CalDRE #00630926 | tonymaniscalchi@gmail.com

ERIC DICKENS | Broker Associate | C: 818.488.4792 | CalDRE #02084284 | dickens@systemsrealestate.com

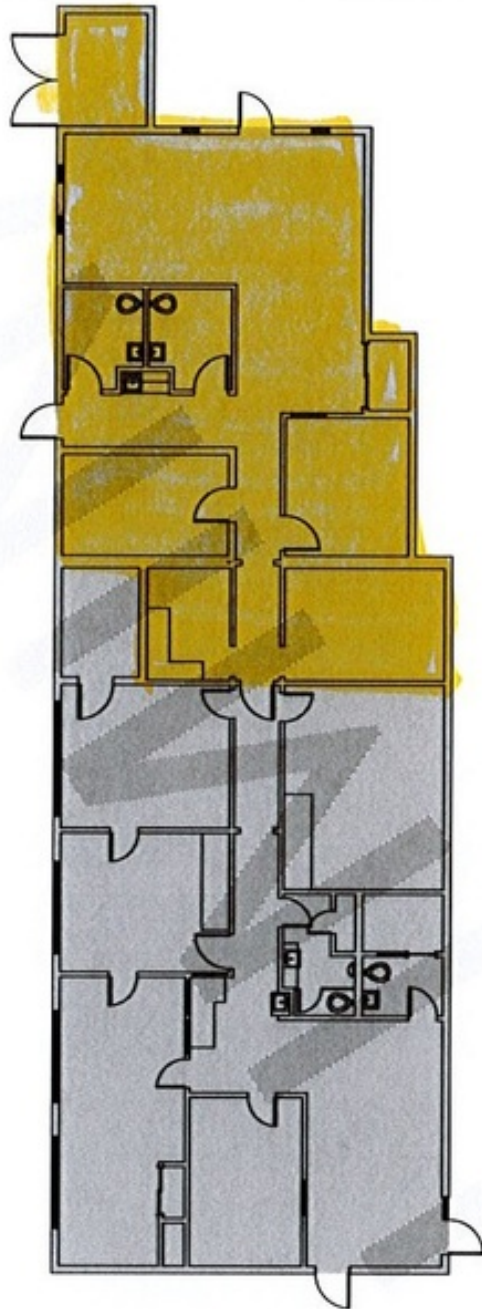


SYSTEMS REAL ESTATE
MANAGEMENT, INC.
SALES • LEASING • MANAGEMENT



1291 LOS ANGELES ST.

GLENDALE, CA 91204



MIKE MANISCALCHI, SIOR | C: 818.427.9934 | CalDRE #01097943 | mike@systemsrealestate.com

TONY MANISCALCHI, SIOR | C: 818.606.8606 | CalDRE #00630926 | tonymaniscalchi@gmail.com

ERIC DICKENS | Broker Associate | C: 818.488.4792 | CalDRE #02084284 | dickens@systemsrealestate.com



SYSTEMS REAL ESTATE
MANAGEMENT, INC.
SALES • LEASING • MANAGEMENT



1291 LOS ANGELES ST.

GLENDALE, CA 91204



MIKE MANISCALCHI, SIOR | C: 818.427.9934 | CalDRE #01097943 | mike@systemsrealestate.com

TONY MANISCALCHI, SIOR | C: 818.606.8606 | CalDRE #00630926 | tonymaniscalchi@gmail.com

ERIC DICKENS | Broker Associate | C: 818.488.4792 | CalDRE #02084284 | dickens@systemsrealestate.com



**SYSTEMS REAL ESTATE
MANAGEMENT, INC.**
SALES • LEASING • MANAGEMENT