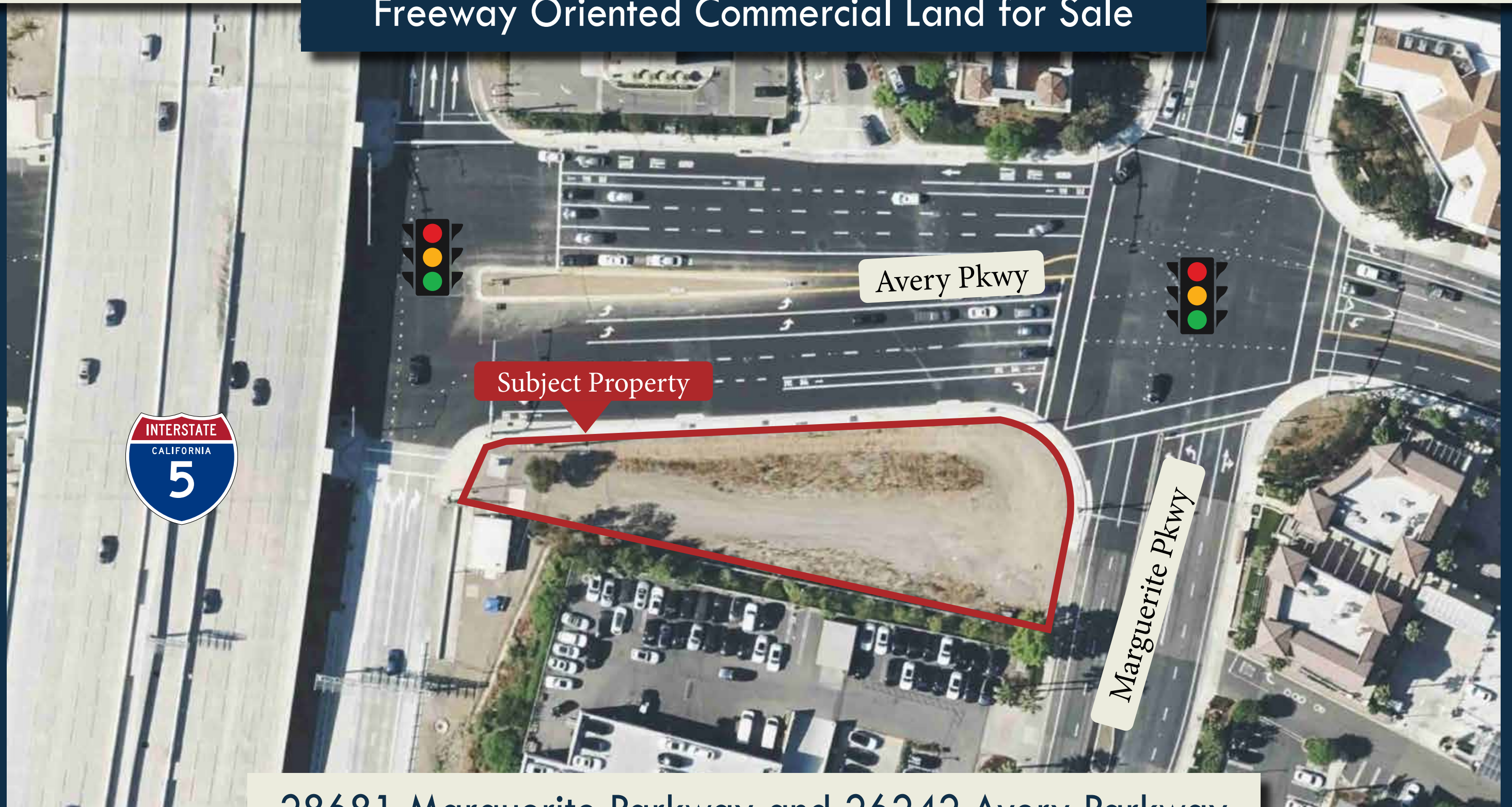


Freeway Oriented Commercial Land for Sale



Subject Property

Avery Pkwy

Marguerite Pkwy

28681 Marguerite Parkway and 26242 Avery Parkway
Mission Viejo, CA 92692
±24,434 SF (±0.56 Acres)



Demographics	1 Mile	3 Mile	5 Mile
Population (2025 Estimate)	9,117	117,845	283,386
Household Income	\$172,222	\$192,014	\$185,382
Day Time Population	13,065	113,904	262,924

Zoning Information - Commercial Highway

Allowable uses by right include most retail, office, and medical uses.

Uses potentially permissible subject to CUP include auto, hotel, liquor store/mini-market, entertainment, day care, and drive-thru uses.

***Contact City of Mission Viejo for more details.



Contact Us

Justin McMahon

Senior Vice President

+1 949 725 8589

justin.mcmahon@cbre.com

Lic. 01721162

Lauren Parker

Associate

+1 949 725 8462

lauren.parker@cbre.com

Lic. 02254189