

±HALF ACRE YARD FOR LEASE

13606-8 HWY 8 BUSINESS // LAKESIDE, CA



JARED WIESE

DRE# 02161629

(619) 300-2656

JARED@EWIESE.COM

WIESE & ASSOCIATES
Real Estate Brokerage & Management

WWW.EWIESE.COM

± HALF ACRE YARD FOR LEASE

13606-8 HWY 8 BUSINESS // LAKESIDE, CA

PROPERTY DESCRIPTION:

- ± half-acre of total yard space, divisible between two separate areas
- Front yard: approx. 10,000 SF with water and electric hookups
- Rear yard: approx. 12,000 SF with water, electric, and sewer hookups
- Shared restroom access inside the building (building occupied by another tenant)

LOCATION:

- County of San Diego
- Prime location just off the 8 Interstate

ZONING:

- C36
- Supports a broad range of commercial uses

AVAILABLE NOW FOR LONG
TERM LEASE OR MONTH TO
MONTH

LEASE RATE: \$6,000 GROSS

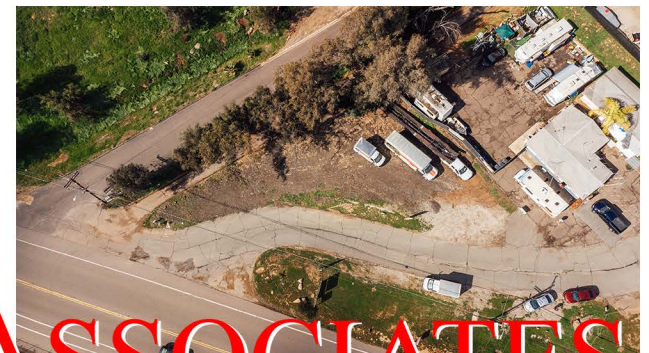
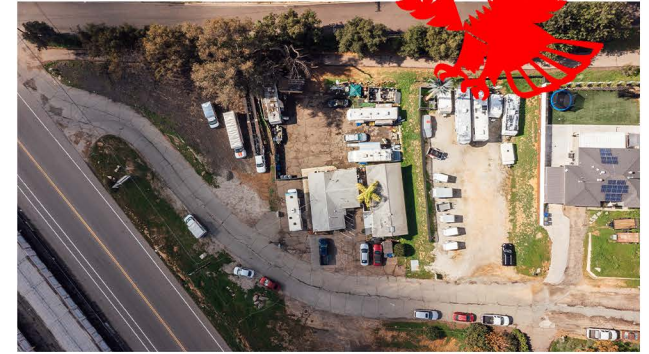
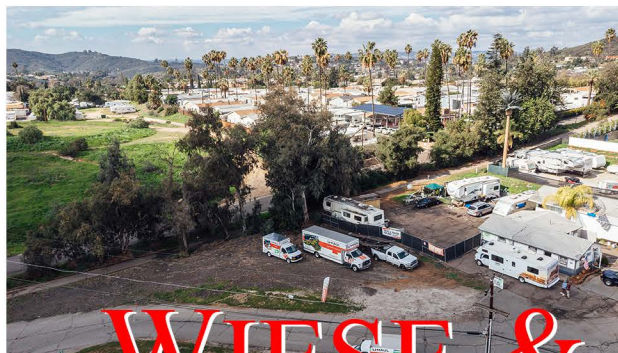


JARED WIESE

DRE# 02161629

(619) 300-2656

JARED@EWIESE.COM



WIESE & ASSOCIATES
Real Estate Brokerage & Management

WWW.EWIESE.COM