

Retail Property

Now Available For Sale

4107 Outer Loop
Louisville, KY 40219
www.cbre.com/louisville



Property Features

- + 1± to 2.1± acres available
- + Located at the signalized corner of Preston Hwy and Outer Loop, adjacent to CVS Pharmacy
- + Situated just west of Jefferson Mall (1.1 million square feet), Kroger, Target, BJ's Wholesale Club, Academy Sports, Hobby Lobby, TJ Maxx and Walmart
- + Outer Loop traffic count: 30,900 VPD; Preston Hwy traffic count: 24,500 VPD

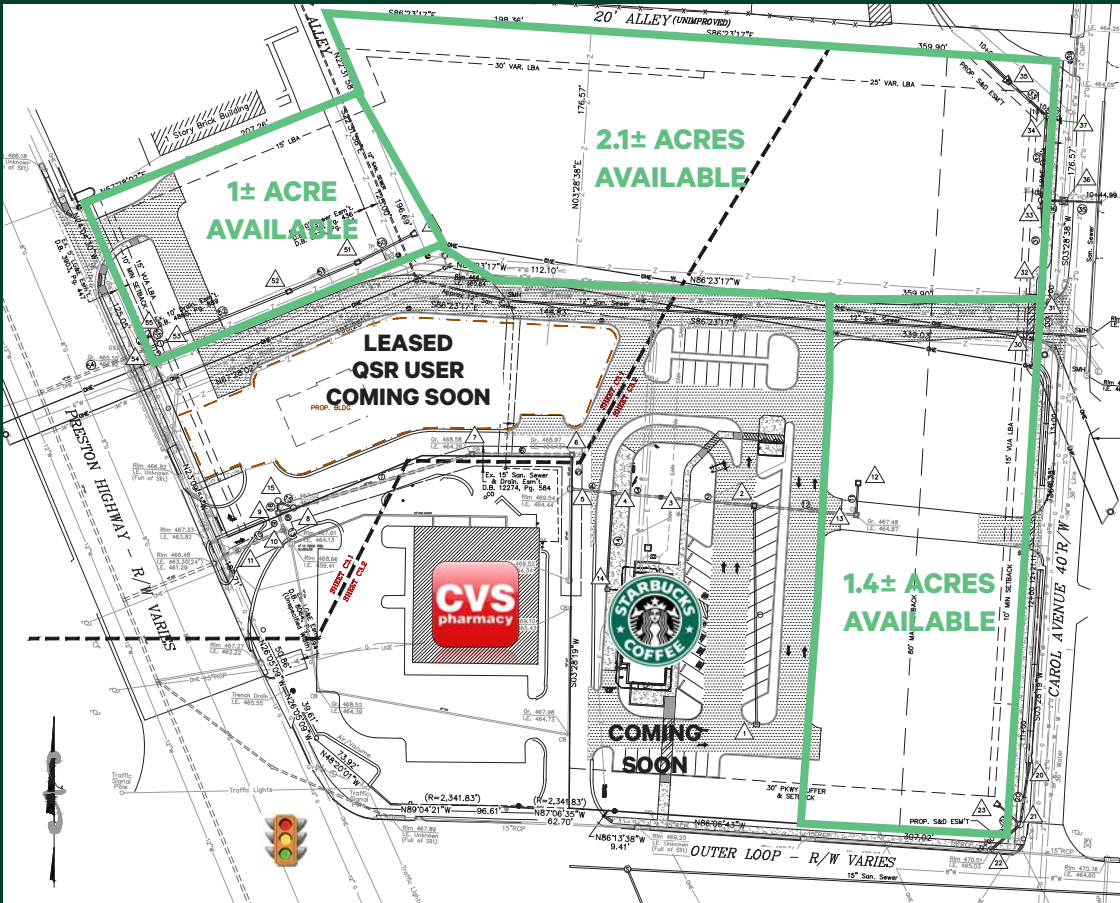


Retail Property

4107 Outer Loop | Louisville, KY 40219

For Sale

Survey



2024 Estimated Demographics

2024 Estimated Demographics	1 Mile	2 Miles	3 Miles	4 Miles
Population	9,899	36,065	69,893	109,913
Daytime Population	11,491	32,468	63,542	116,076
Average Household Income	\$69,837	\$72,014	\$75,189	\$76,930

Contact Us

Clay Hunt

First Vice President
+1 502 412 7607
clay.hunt@cbre.com

Robert Schwartz

Senior Vice President
+1 502 412 7606
robert.schwartz@cbre.com

Bryan Schwartz

Associate
+1 502 412 7635
bryan.schwartz@cbre.com

© 2025 CBRE, Inc. All rights reserved. This information has been obtained from sources believed reliable, but has not been verified for accuracy or completeness. You should conduct a careful, independent investigation of the property and verify all information. Any reliance on this information is solely at your own risk. CBRE and the CBRE logo are service marks of CBRE, Inc. All other marks displayed on this document are the property of their respective owners, and the use of such logos does not imply any affiliation with or endorsement of CBRE. Photos herein are the property of their respective owners. Use of these images without the express written consent of the owner is prohibited.