

FOR LEASE | SIGNAGE AVAILABLE
± **15,000 - 30,000 SF**

BERRY-ROCK

NW 5TH & WALNUT AVE
OKLAHOMA CITY, OK 73102



**PRISM
BANK**

BERRY-ROCK

Tenant Three

Tenant Four

123 Walnut



**CUSHMAN &
WAKEFIELD**

**COMMERCIAL
OKLAHOMA**



CUSHMAN &
WAKEFIELD

COMMERCIAL
OKLAHOMA

NW 5TH & WALNUT AVE
OKLAHOMA CITY, OK 73102

FOR LEASE

PROPERTY OVERVIEW

BUILDING SIZE:

± 60,000 SF

AVAILABLE LEASE SPACE:

2ND FLOOR | ± 15,000 SF

3RD FLOOR | ± 15,000 SF

YEAR BUILT:

UNDER CONSTRUCTION

LEASE RATE:

\$28.00 NNN

The Berry Rock Building is currently under construction in OKC's Innovation District. This building features a unique design with 4 stories of OFFICE SPACE. Exterior signage is available with I-235 frontage. Landlord is willing to consider flexible lease terms.





CUSHMAN &
WAKEFIELD

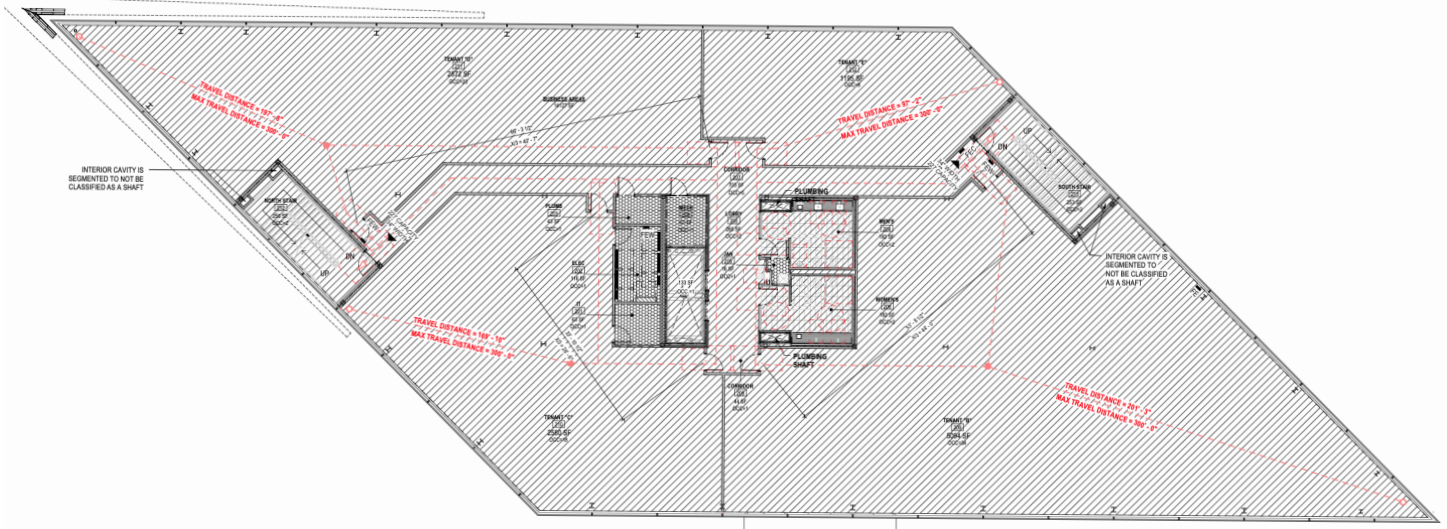
COMMERCIAL
OKLAHOMA

NW 5TH & WALNUT AVE
OKLAHOMA CITY, OK 73102

FOR LEASE

LEASE RATE
\$28.00 NNN

SECOND FLOOR | FLOORPLAN



CONTACT US

TRAVIS MASON
+1 405 249 0655

tmason@commercialoklahoma.com

204 N Robinson Avenue, Ste. 2000 | Oklahoma City, OK 73102
+1 405 563 5000 | commercialoklahoma.com

MICAH SHERMAN, CCIM
+1 405 488 5548

msherman@commercialoklahoma.com

VIVIENNE VOGLER
+1 405 570 8595

vvogler@commercialoklahoma.com

©2025 Cushman & Wakefield | Commercial Oklahoma. All rights reserved. The material in this presentation has been prepared solely for information purposes, and is strictly confidential. Any disclosure, use, copying or circulation of this presentation (or the information contained within it) is strictly prohibited, unless you have obtained Cushman & Wakefield's prior written consent. The views expressed in this presentation are the views of the author and do not necessarily reflect the views of Cushman & Wakefield. Neither this presentation nor any part of it shall form the basis of, or be relied upon in connection with any offer, or act as an inducement to enter into any contract or commitment whatsoever. NO REPRESENTATION OR WARRANTY IS GIVEN, EXPRESS OR IMPLIED, AS TO THE ACCURACY OF THE INFORMATION CONTAINED WITHIN THIS PRESENTATION, AND CUSHMAN & WAKEFIELD IS UNDER NO OBLIGATION TO SUBSEQUENTLY CORRECT IT IN THE EVENT OF ERRORS.