



Each office independently owned and operated

MAX JUGE - RE/MAX COMMERCIAL

3331 Severn Avenue | Suite 200

Metairie, LA 70002

FOR SALE/LEASE

INDUSTRIAL PROPERTY

23516 HAVEN BOULEVARD - FOR SALE OR LEASE

PONCHATOULA, LA 70454



PRESENTED BY:

MAX JUGE

Sales Associate

504.838.0001

LA #995716624

23516 HAVEN BOULEVARD - FOR SALE OR LEASE

PONCHATOULA, LA 70454



PROPERTY DESCRIPTION

23516 Haven Blvd is available for lease or sale! This newly constructed warehouse / retail center - sitting on a generous ~ 1.58 acres - is available for immediate tenant move-in or a new owner. Located directly off I-12 on Exit 47 in Ponchatoula, 23516 Haven Blvd is ideally positioned for a variety of different uses. Each suite has drive-in overhead doors, with suites 100 & 300 having two. Ample parking for customers and employees. One space is currently occupied (2,120 SF), with two other suites currently vacant.

Spaces can be leased together or separate.

Please contact agent for more information on this listing.

SALE OFFERING

Sale Price:	\$1,350,000
Building Size	6,945 SF
Zoning:	none (no zoning requirements)

LEASE OFFERING (NNN)

	SUITE 200	SUITE 300
Year 1	\$9.99/SF/Yr	\$12.00/SF/Yr
Year 2:	\$12.00/SF/Yr	\$12.50/SF/Yr
Year 3:	\$12.50/SF/Yr	\$13.00/SF/Yr
Year 4:	\$13.00/SF/Yr	\$13.50/SF/Yr
Year 5:	\$13.50/SF/Yr	\$14.00/SF/Yr



MAX JUGE - RE/MAX COMMERCIAL
Each office independently owned and operated

MAX JUGE

Sales Associate

504.838.0001

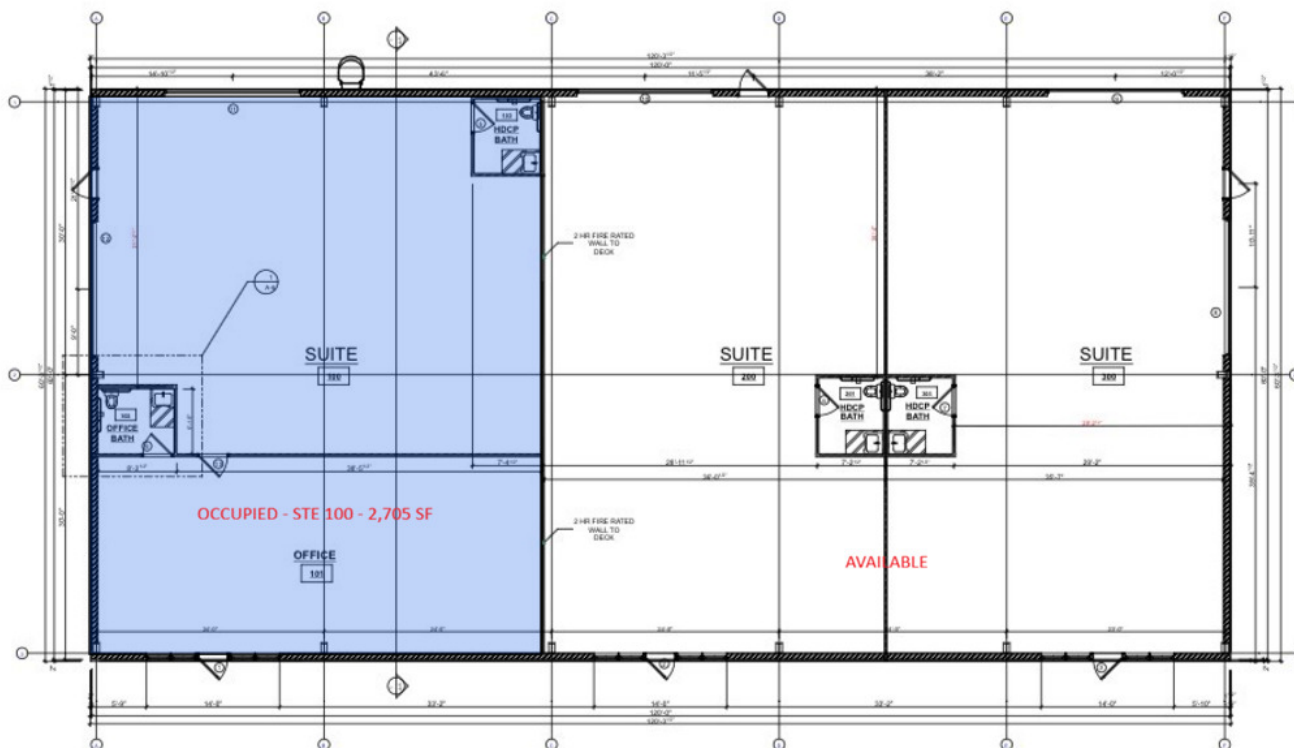
mjuge@nolacommercial.com

LA #995716624

3331 Severn Avenue | Suite 200
Metairie, LA 70002

23516 HAVEN BOULEVARD - FOR SALE OR LEASE

PONCHATOULA, LA 70454



DIMENSION FLOOR PLAN

SQUARE FOOTAGE	
SUITE 100 SHOP AREA	1757
OFFICE AREA	948
SUITE 200	2120
SUITE 300	2120
TOTAL	6945

WALLS AND INTERIOR FINISHINGS	
NO.	DESCRIPTION
1	2-HR FIRE RATED WALL TO DECK
2	1/2" GYP BOARD
3	1/2" GYP BOARD
4	1/2" GYP BOARD
5	1/2" GYP BOARD
6	1/2" GYP BOARD
7	1/2" GYP BOARD
8	1/2" GYP BOARD
9	1/2" GYP BOARD
10	1/2" GYP BOARD
11	1/2" GYP BOARD
12	1/2" GYP BOARD
13	1/2" GYP BOARD
14	1/2" GYP BOARD
15	1/2" GYP BOARD
16	1/2" GYP BOARD
17	1/2" GYP BOARD
18	1/2" GYP BOARD
19	1/2" GYP BOARD
20	1/2" GYP BOARD
21	1/2" GYP BOARD
22	1/2" GYP BOARD
23	1/2" GYP BOARD
24	1/2" GYP BOARD
25	1/2" GYP BOARD
26	1/2" GYP BOARD
27	1/2" GYP BOARD
28	1/2" GYP BOARD
29	1/2" GYP BOARD
30	1/2" GYP BOARD
31	1/2" GYP BOARD
32	1/2" GYP BOARD
33	1/2" GYP BOARD
34	1/2" GYP BOARD
35	1/2" GYP BOARD
36	1/2" GYP BOARD
37	1/2" GYP BOARD
38	1/2" GYP BOARD
39	1/2" GYP BOARD
40	1/2" GYP BOARD
41	1/2" GYP BOARD
42	1/2" GYP BOARD
43	1/2" GYP BOARD
44	1/2" GYP BOARD
45	1/2" GYP BOARD
46	1/2" GYP BOARD
47	1/2" GYP BOARD
48	1/2" GYP BOARD
49	1/2" GYP BOARD
50	1/2" GYP BOARD
51	1/2" GYP BOARD
52	1/2" GYP BOARD
53	1/2" GYP BOARD
54	1/2" GYP BOARD
55	1/2" GYP BOARD
56	1/2" GYP BOARD
57	1/2" GYP BOARD
58	1/2" GYP BOARD
59	1/2" GYP BOARD
60	1/2" GYP BOARD
61	1/2" GYP BOARD
62	1/2" GYP BOARD
63	1/2" GYP BOARD
64	1/2" GYP BOARD
65	1/2" GYP BOARD
66	1/2" GYP BOARD
67	1/2" GYP BOARD
68	1/2" GYP BOARD
69	1/2" GYP BOARD
70	1/2" GYP BOARD
71	1/2" GYP BOARD
72	1/2" GYP BOARD
73	1/2" GYP BOARD
74	1/2" GYP BOARD
75	1/2" GYP BOARD
76	1/2" GYP BOARD
77	1/2" GYP BOARD
78	1/2" GYP BOARD
79	1/2" GYP BOARD
80	1/2" GYP BOARD
81	1/2" GYP BOARD
82	1/2" GYP BOARD
83	1/2" GYP BOARD
84	1/2" GYP BOARD
85	1/2" GYP BOARD
86	1/2" GYP BOARD
87	1/2" GYP BOARD
88	1/2" GYP BOARD
89	1/2" GYP BOARD
90	1/2" GYP BOARD
91	1/2" GYP BOARD
92	1/2" GYP BOARD
93	1/2" GYP BOARD
94	1/2" GYP BOARD
95	1/2" GYP BOARD
96	1/2" GYP BOARD
97	1/2" GYP BOARD
98	1/2" GYP BOARD
99	1/2" GYP BOARD
100	1/2" GYP BOARD



MAX JUGE - RE/MAX COMMERCIAL
Each office independently owned and operated

MAX JUGE
Sales Associate
504.838.0001
mjuge@nolacommercial.com
LA #995716624

3331 Severn Avenue | Suite 200
Metairie, LA 70002

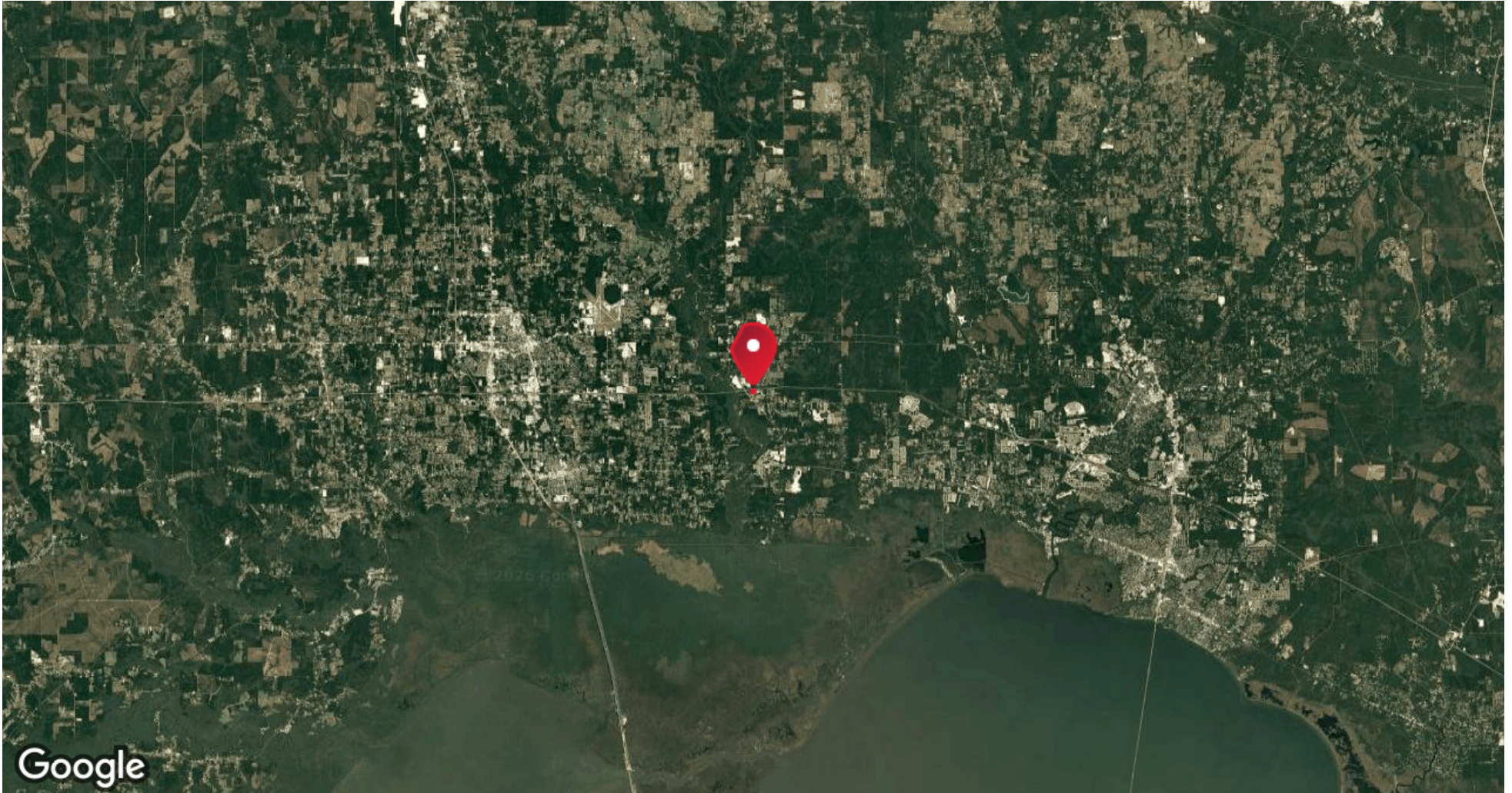
FOR SALE/LEASE

INDUSTRIAL PROPERTY

LOCATION MAP

23516 HAVEN BOULEVARD - FOR SALE OR LEASE

PONCHATOULA, LA 70454



MAX JUGE - RE/MAX COMMERCIAL
Each office independently owned and operated

MAX JUGE

Sales Associate

504.838.0001

mjuge@nolacommercial.com

LA #995716624

3331 Severn Avenue | Suite 200
Metairie, LA 70002

All information contained herein is deemed reliable but not guaranteed. Each office independently owned and operated

FOR SALE/LEASE

INDUSTRIAL PROPERTY

ADDITIONAL PHOTOS

23516 HAVEN BOULEVARD - FOR SALE OR LEASE

PONCHATOULA, LA 70454



MAX JUGE - RE/MAX COMMERCIAL
Each office independently owned and operated

MAX JUGE

Sales Associate

504.838.0001

mjuge@nolacommercial.com

LA #995716624

3331 Severn Avenue | Suite 200
Metairie, LA 70002

All information contained herein is deemed reliable but not guaranteed. Each office independently owned and operated

23516 HAVEN BOULEVARD - FOR SALE OR LEASE

PONCHATOULA, LA 70454

POPULATION

	0.3 MILES	0.5 MILES	1 MILE
Total Population	99	249	643
Average Age	38	37	37
Average Age (Male)	37	37	37
Average Age (Female)	38	38	38

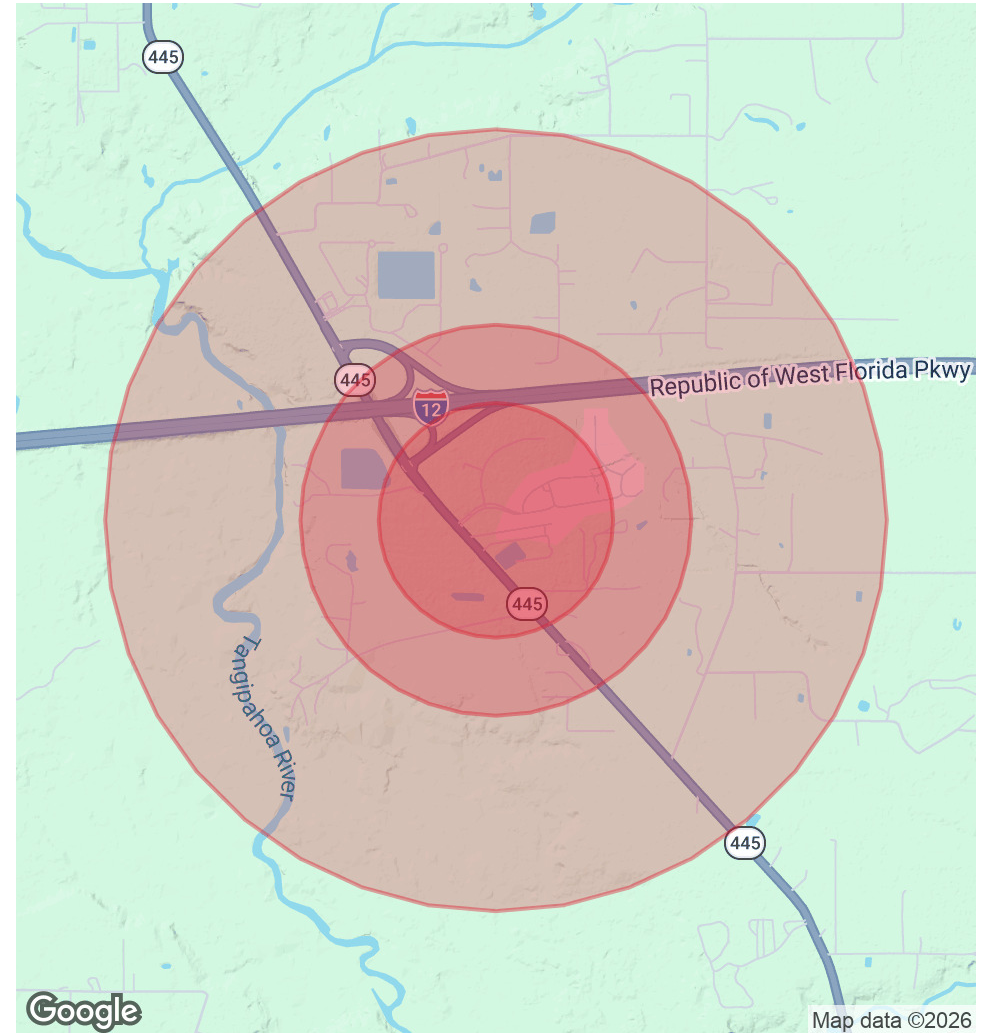
HOUSEHOLDS & INCOME

	0.3 MILES	0.5 MILES	1 MILE
Total Households	36	91	236
# of Persons per HH	2.8	2.7	2.7
Average HH Income	\$84,358	\$84,354	\$84,045
Average House Value	\$409,094	\$408,954	\$400,561

TRAFFIC COUNTS

	0.3 MILES	0.5 MILES	1 MILE
I-12 @ 48.31 69,862 VPD (2025)			
HWY 445 @ Holmes Lane 13,592 VPD (2025)	/day		

Demographics data derived from AlphaMap



MAX JUGE - RE/MAX COMMERCIAL
Each office independently owned and operated

MAX JUGE

Sales Associate

504.838.0001

mjuge@nolacommercial.com

LA #995716624

3331 Severn Avenue | Suite 200
Metairie, LA 70002