

# THE OFFICE SUITES AT 1164 BISHOP

The Office Suites at 1164 Bishop offers a unique opportunity for professionals such as entrepreneurs, solo practitioners, and independent contractors to thrive in an affordable and collaborative workspace. Located in the prestigious Finance Factors Center in downtown Honolulu, our newly built coworking spaces are in excellent condition.

Establish your business with a distinguished Bishop Street address and enjoy the same professional benefits as the building's office tenants, including access to high-quality amenities and a reputable business environment. This iconic location, home to leading firms in law, engineering, architecture, and finance, offers a collaborative and inspiring workspace within a respected professional community.

## COWORKING AMENITIES

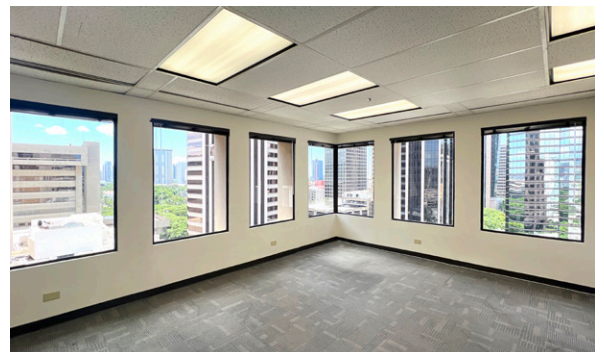
- Wet Bar & Coffee Bar
- Small and Large Conference Rooms
- Common Area Lounge
- Complimentary High-Speed Internet
- Pre-Installed VOIP Phone and Printing Services
- Assigned Mailboxes Available
- 24-Hour Security
- Central Air Conditioning
- Validated Parking

## AVAILABLE COWORKING SPACES

Suite	USF	Description
605	224	Private corner office with windows overlooking Bishop Street.
934	115	Private office with 2 windows with Mauka views.
1206	178	Private office with 3 windows with Makai view.
1208	113	Private office with 2 windows overlooking Bishop St.

*Coworking office rents start at \$600/month. All advertised offices are private, locked spaces for the exclusive use of each tenant.*

*Rent is inclusive of all amenities including 24-hour access and daily janitorial services.*



The information contained herein has been obtained from sources believed to be reliable. While we know of no reason to doubt its accuracy, Standard Commercial LLC makes no guarantee, warranty or representation as to its accuracy or completeness. It is the responsibility of you and your advisors to independently verify the information and conduct a careful independent investigation of the property to determine its suitability to your needs. 3/17/26

OFFERED EXCLUSIVELY BY

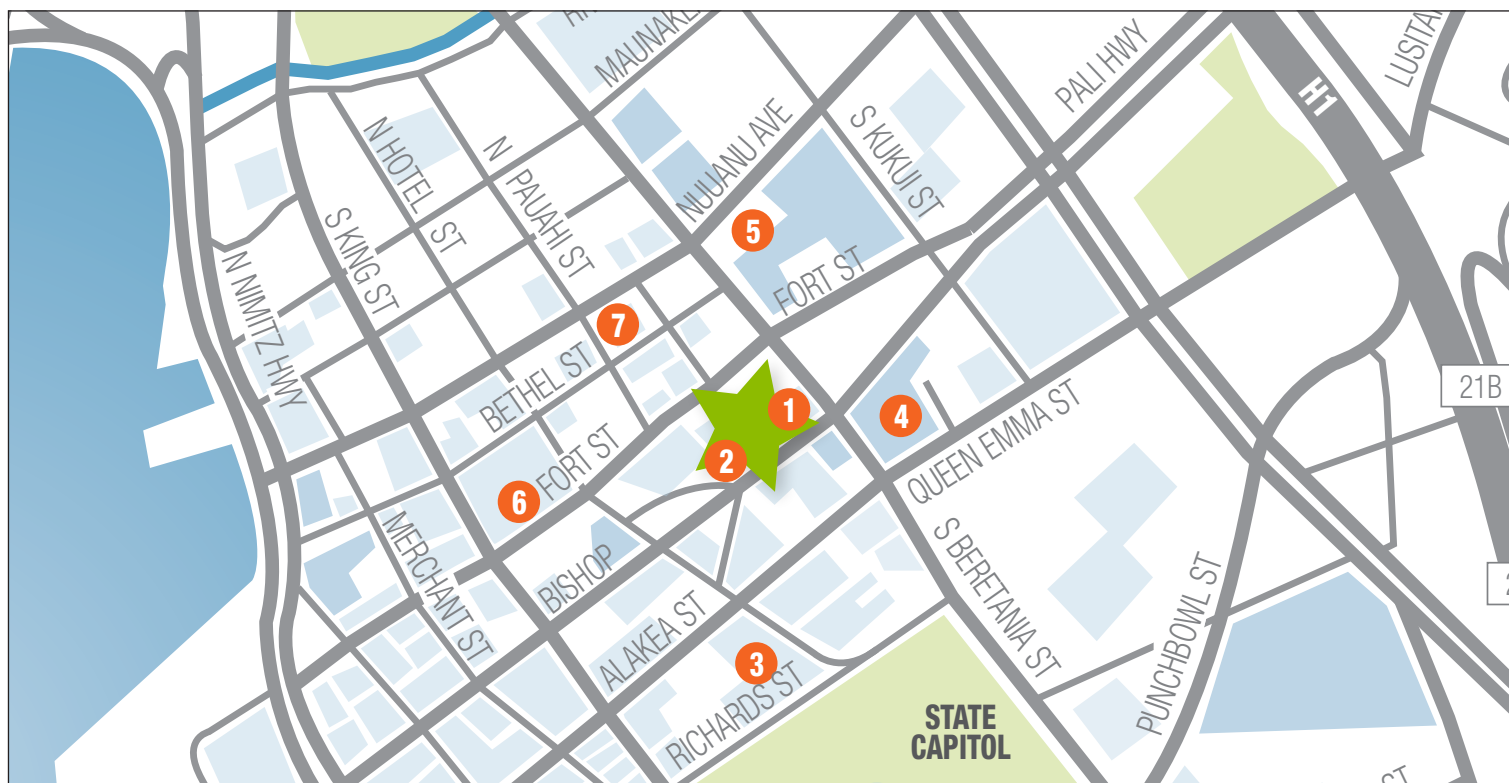


201 Merchant Street, Suite 2228  
Honolulu, HI 96813  
O 808 208 8100 | F 808 208 8109  
standardcommercial.com

Phil Yoon  
Property Manager  
D 917 915 5263  
phil@standardcommercial.com

### Additional Parking Options

Property	Distance from Finance Factor Center	Parking Co.	Visitor Parking Rates	Monthly Cost per Stall
1 CENTURY SQUARE 1188 Bishop St	150 ft/1 min walk	Standard	\$3.50/half-hour	N/A
2 BISHOP PLACE 1132 Bishop St	300 ft/1 min walk	ABM	\$4.25/half-hour	N/A
3 ALII PLACE 1099 Alakea St	0.2 miles/4 min walk	ABM	\$.75/half-hour up to 1.5 hours \$1.50/ half-hour thereafter	\$382.20 rsvd \$267.02 unrsvd
4 CAPITOL PLACE 1200 Queen Emma St	0.2 miles/4 min walk	Diamond	\$4.00/2 hours	\$275.00
5 KUKUI PLAZA 1255 Nuuanu Ave	0.2 miles/4 min walk	Propark	\$.75/half-hour up to 2 hours \$1.50/half- hour thereafter	\$100.00
6 PANTHEON 1108 Fort Street Mall	0.2 miles/4 min walk	Pantheon	N/A	5th Fl \$235.60 6th Fl \$214.66 7th Fl \$198.95 8th Fl \$172.77
7 MARK'S GARAGE 22 S. Pauahi St	0.3miles/5 min walk	Standard	\$2.00/20 min	N/A



OFFERED EXCLUSIVELY BY



201 Merchant Street, Suite 2228  
Honolulu, HI 96813  
O 808 208 8100 | F 808 208 8109  
standardcommercial.com

Phil Yoon  
Property Manager  
D 917 915 5263  
phil@standardcommercial.com