

WHITE OAK OFFICE CENTRE

11120 New Hampshire Avenue, Silver Spring, Maryland

NEW LOBBY AND ELEVATOR



MEDICAL/OFFICE SUITES FOR LEASE

AVAILABLE SUITES:

<u>SUITE</u>	<u>SIZE</u>	<u>CONTIGUOUS</u>
505	1,660 SF	1,660 SF
506	1069 SF	1,504 SF
508	435 SF	1,504 SF

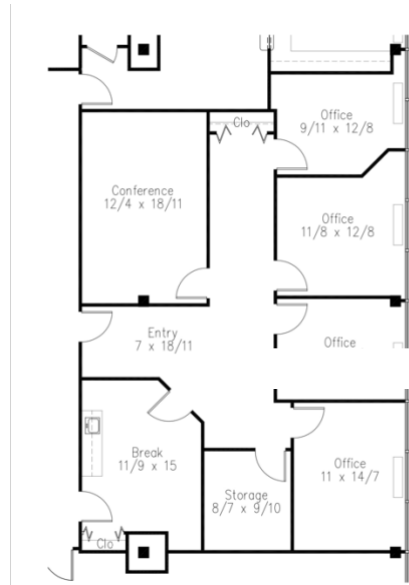


BUILDING FEATURES

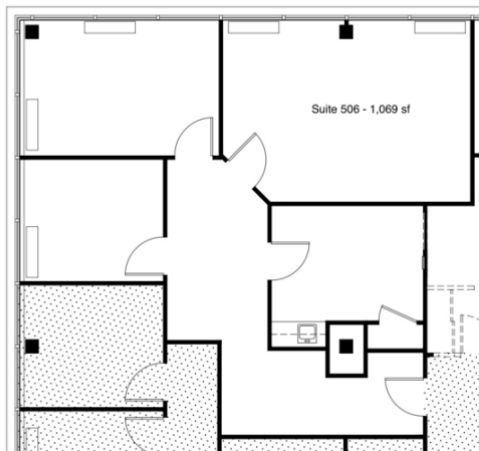
- Close to Route 29 (Columbia Pike) and I-495
- Minutes to the new Adventist HealthCare White Oak Medical Center
- Within walking distance to Planet Fitness, McDonald's, Dunkin Donuts, other retailers and public transportation
- Close proximity to the new FDA Headquarters
- Free surface parking

For more information, please call:
Gil Weinbaum - ZALCO COMMERCIAL Direct: (301) 844-6918 / Cell: (301) 466-2421 gweinbaum@ZalcoCommercial.com

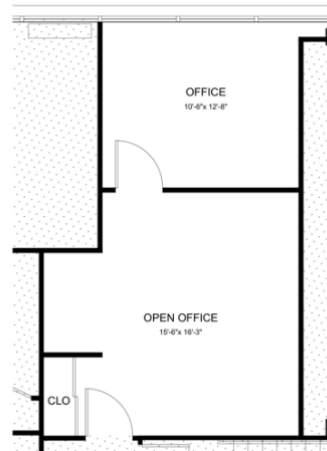




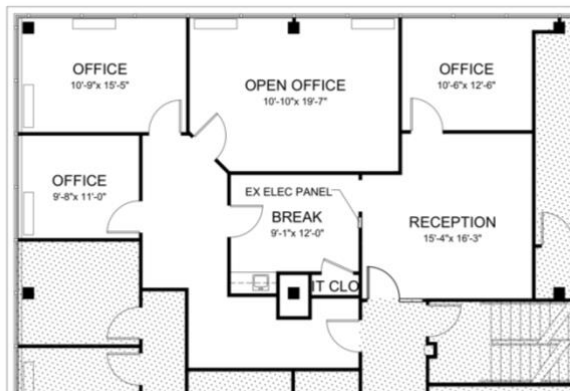
Suite 505: 1,660 sf



Suite 506: 1,069 sf



Suite 508: 435 sf



Suite 506 & 508 Combined, Potential Layout – 1,504 sf