

FOR LEASE MEDICAL OFFICE CONDOMINIUM



Lease Details:

- Lease Price: \$2.00/SF/Month, NNN

Property Details:

- Property Type: Medical Office Condominium
- Property Total Size with Common Area: +/-1,716 SF
- Usable Space: +/-1,272 SF
- Year Built: 2006
- Number of Restrooms: 2
- Location in Building: 2nd Floor
- Zoning: CPO (Commercial Professional Office)
- APN #: 111-740-008

2342 Professional Parkway, Ste. 210 | Santa Maria, CA
Turn-key Medical Office Space for lease in a recently built professional office building. Improvements include 5 Exam Rooms, 3 Offices, Records Storage, Employee Lounge and Reception Area. In addition, the building has a large Common Conference Room and plenty of on-site parking.

Jerry Schmidt
805.928.2800 ext. 107
Jerry@PacificaCRE.com
Lic #00956042

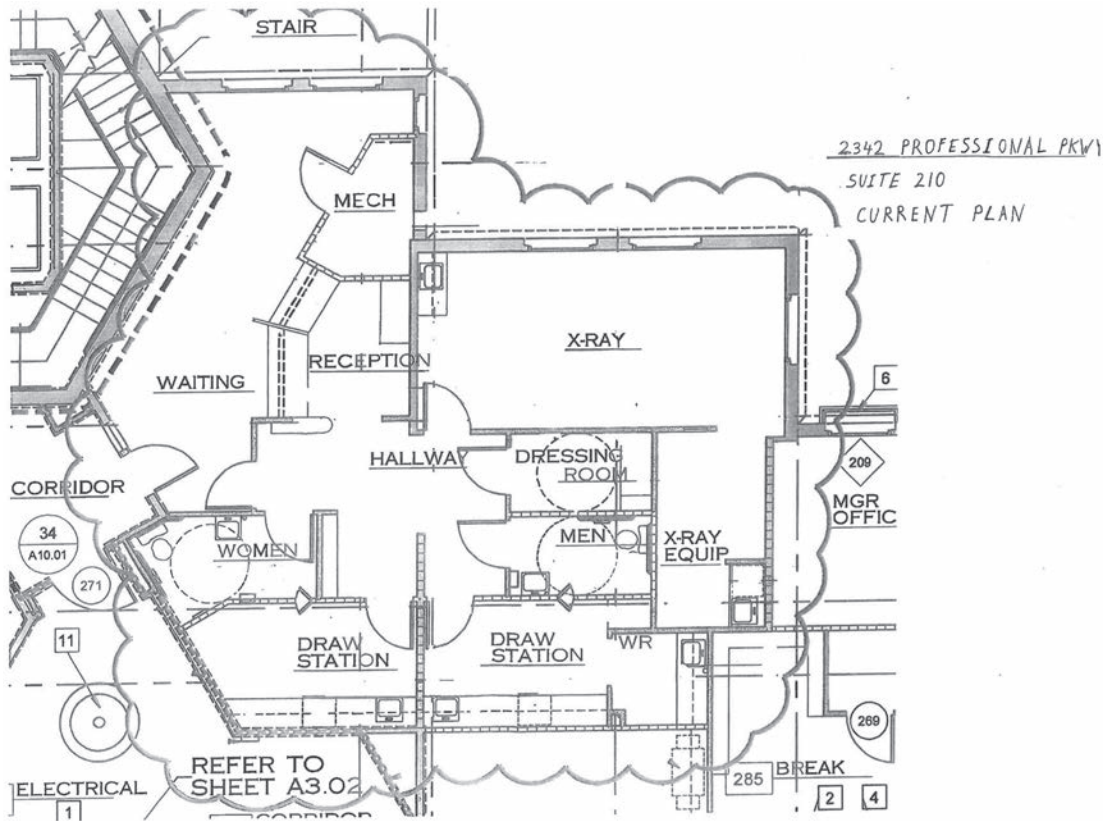
Joseph Lupien
805.928.2800 ext. 116
Joseph@PacificaCRE.com
Lic #02207139



2520 Professional Parkway | Santa Maria, CA 93455 | PacificaCommercialRealty.com

Information contained herein has been obtained from the owner of the property or from other sources deemed reliable. We have no reason to doubt its accuracy, but we do not guarantee it.

FOR LEASE 2342 Professional Parkway | Santa Maria, CA



2520 Professional Parkway | Santa Maria, CA 93455 | PacificaCommercialRealty.com

Information contained herein has been obtained from the owner of the property or from other sources deemed reliable. We have no reason to doubt its accuracy, but we do not guarantee it.