

Jefferson Cenza Retail
535 W Crowther Ave | Placentia, CA 92870



Ground Floor

- Opportunity to lease in brand new multifamily development with prominent identity and first class design.
- High visibility facade signage opportunities visible from CA-57 (300,000+ cars per day)
- Dedicated customer base of over 400 residential units in one, two, and three bedroom layouts
- Affluent surrounding population with average household incomes over \$130,000 in a five mile radius

949.698.1109 | adam.handfield@srsre.com
CA License No. 01959419

Source: Esri

Crowther Ave	approx. 8,900 cpd
57 Freeway	approx. 300,800 cpd
Source: Costar	

The information presented was obtained from sources deemed reliable; however SRS Real Estate Partners does not guarantee its completeness or accuracy.

SRSRE.COM

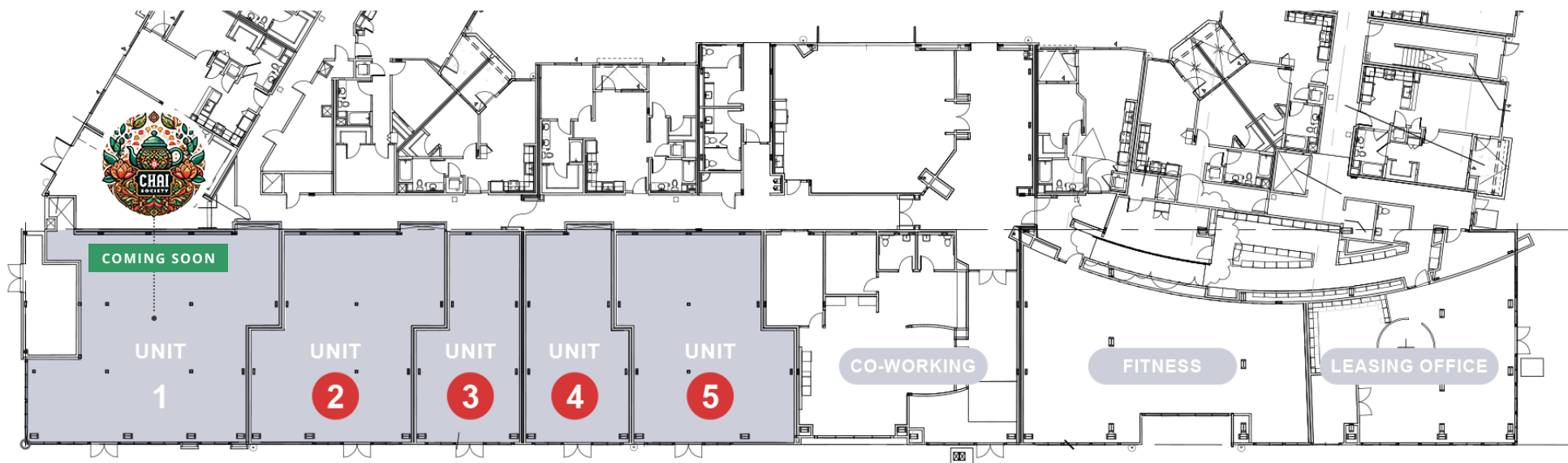
Jefferson Cenza Retail

535 W Crowther Ave | Placentia, CA 92870



Jefferson Cenza Retail

535 W Crowther Ave | Placentia, CA 92870



Crowther Ave (approx. 8,900 cars per day)

Tenant Directory

	NAME	SF
	Co-working	2,403
Unit 1	Chai Society	2,293
Unit 2	Retail Available	1,794
Unit 3	Retail Available	1,005
Unit 4	Retail Available	1,101
Unit 5	Retail Available	1,698
	Trash	314
	Total	10,608

CONTACT

Terrison Quinn

949.698.1107 | terrison.quinn@srsre.com
CA License No. 01789657

Adam Handfield

949.698.1109 | adam.handfield@srsre.com
CA License No. 01959419

© SRS Real Estate Partners

610 Newport Center Drive, Suite 1500, Newport Beach, CA 92660

The information presented was obtained from sources deemed reliable; however SRS Real Estate Partners does not guarantee its completeness or accuracy.

Jefferson Cenza Retail

535 W Crowther Ave | Placentia, CA 92870



CONTACT

Terrison Quinn
949.698.1107
terrison.quinn@srsre.com
CA License No. 01789657

Adam Handfield
949.698.1109
adam.handfield@srsre.com
CA License No. 01959419

© SRS Real Estate Partners
610 Newport Center Drive, Suite 1500
Newport Beach, CA 92660

Site

535 W Crowther Ave
Placentia, CA 92870



SRS REAL ESTATE PARTNERS

This information contained herein was obtained from sources deemed to be reliable; however SRS Real Estate Partners makes no guarantees, warranties or representations as to the completeness or accuracy thereof.