

RETAIL / LAND

FOR SALE

ARTESIA BLVD REDEVELOPMENT OPPORTUNITY

11600 Artesia Blvd, Artesia, CA 90701



PROPERTY INFORMATION

- ±2,076 SF buildings | ±26,161 SF land
- Zoned ATCG, General Commercial
- Located in the Artesia Boulevard Corridor Specific Plan, economic redevelopment

HIGHLIGHTS

- South of 91 FWY, nearby Pioneer Blvd
- Signalized corner, street frontage/visibility
- Nearby major retail arteries, less than 1 mile to Los Cerritos Center & Auto Square

For More Information Contact Johnny Cho

CPGI

714.505.8225 | jcho@cpgi-re.com | cpgi-re.com

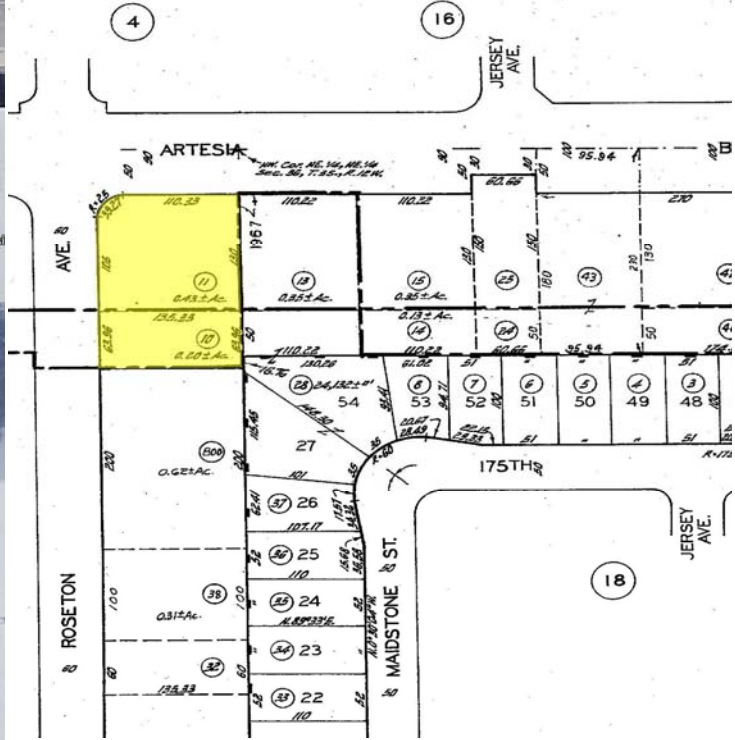
2271 W Malvern Ave 245 | Fullerton, California 92833 | CA DRE #01465797



RETAIL / LAND

FOR SALE

City of Artesia Conceptual Development Renderings Artesia Boulevard Corridor Specific Plan



©2022 CPGI

NO WARRANTY OR REPRESENTATION, EXPRESS OR IMPLIED, IS MADE TO THE ACCURACY OR COMPLETENESS OF THE INFORMATION CONTAINED HEREIN, AND SAME IS SUBMITTED SUBJECT TO ERRORS, OMISSIONS, CHANGE OF PRICE, RENTAL OR OTHER CONDITIONS, WITHDRAWAL WITHOUT NOTICE, AND TO ANY SPECIAL LISTING CONDITIONS IMPOSED BY THE PROPERTY OWNER(S). AS APPLICABLE, WE MAKE NO REPRESENTATION AS TO THE CONDITION OF THE PROPERTY (OR PROPERTIES) IN QUESTION.

CPGI | cpgi-re.com

2271 W Malvern Ave 245 | Fullerton, California 92833 | CA DRE #01862441

