



FOR LEASE:

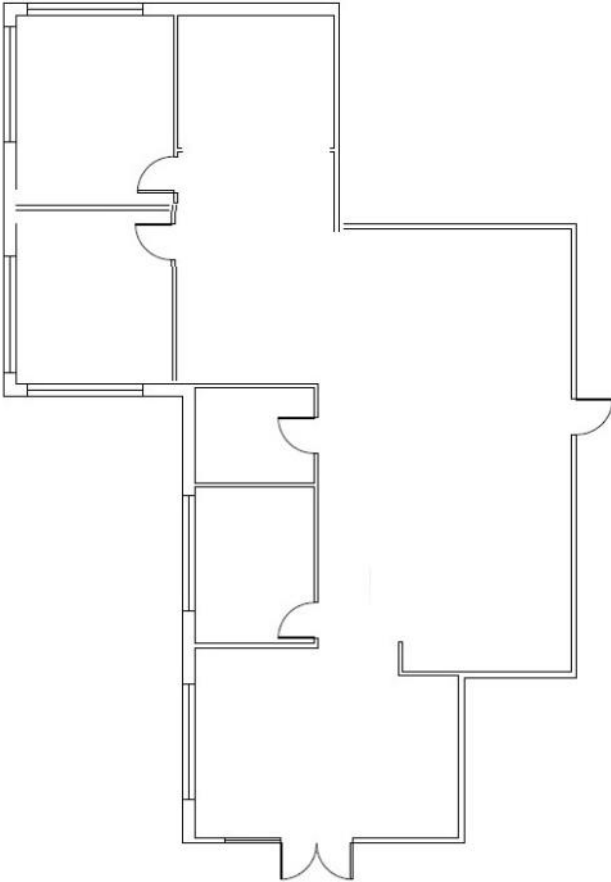
3636 CAMINO DEL RIO NORTH

SAN DIEGO, CA 92108

PROPERTY OVERVIEW:

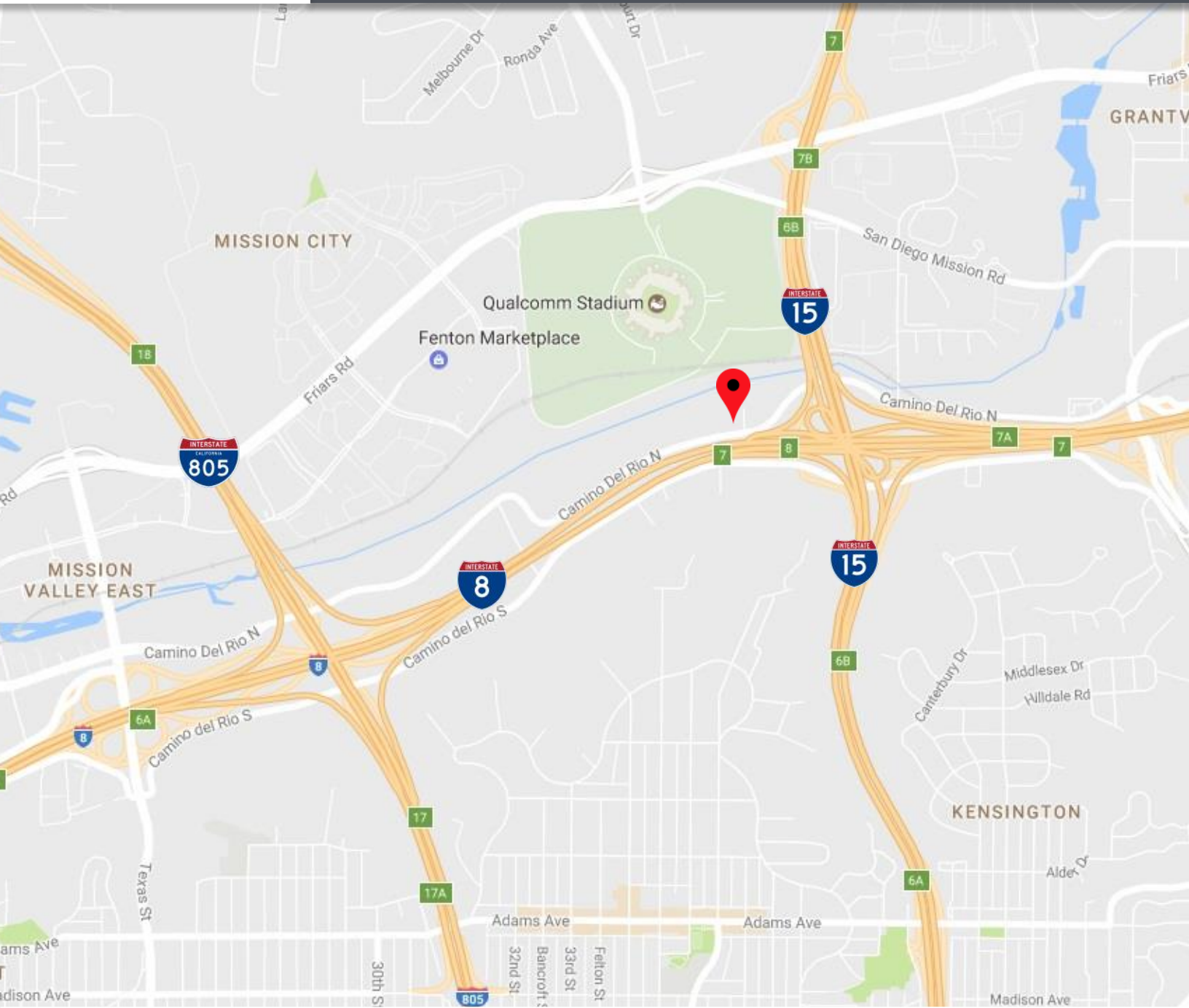
3636 CAMINO DEL RIO NORTH IS A 28,551 SF, TWO STORY PROFESSIONAL OFFICE BUILDING LOCATED IN CENTRAL MISSION VALLEY. THE PROPERTY FEATURES TWO ENTRANCES FOR EASY ACCESS THROUGHOUT. SUITES INCLUDE UNRESERVED ONSITE PARKING AT A RATIO OF 2.9 PER 1,000 SF LEASED. ALSO INCLUDED IS VISITOR PARKING AND AN ELEVATOR ONSITE. CLIENTS AND EMPLOYEES WILL ENJOY BEING ONLY MINUTES FROM THE RESTAURANT AND RETAIL AMENITIES OF MISSION VALLEY. DON'T MISS OUT ON THE PROFESSIONAL OFFICE SPACES AVAILABLE AT 3636 CAMINO DEL RIO NORTH.





SUITE 100
SIZE - 2,238 SF
\$2.25 PSF + ELECTRIC

- FEATURING TWO (2) WINDOW LINED OFFICES, CONFERENCE ROOM, RECEPTION, BREAK ROOM, AN OPEN CENTRALWORK SPACE, AND CONVENIENT DOUBLE DOOR ENTRY FROM MAIN BUILDING LOBBY.
- TALL 8' CEILINGS THROUGHOUT
- LARGE OFFICES WITH GREAT NATURAL LIGHT
- AVAILABLE NOW, CALL FOR TOURS





LOCA-

3636 CAMINO DEL RIO NORTH
SAN DIEGO, CA 92108



PETER WRIGHT

Lic. #01846272

619-243-8450

pwright@qfcre.com

MICHAEL WOKULUK

Lic. #01972342

619-243-8459

[mwoku-
luk@qfcre.com](mailto:mwoku-
luk@qfcre.com)