



STANDALONE FLEX BUILDING WITH OUTDOOR STORAGE

PROPERTY TYPE: **INDUSTRIAL / FLEX**

AVAILABLE: **5,000 SF**
(~2,500 SF WAREHOUSE)

YARD SIZE: **~0.5 ACRES**

LEASE RATE: **\$14.50/SF**

2026 NNN EST: **\$7.35/SF**
(Tenant pays for their own utilities and is responsible for R&M)

FEATURES:

- 5,000 SF standalone flex building with clean warehouse and ample office space
- Located less than five minutes from I-25 and easy access to HWY 66
- One drive-in door, 11'x12'
- Access to shared, gated yard
- Zoned LI (Light Industrial - Town of Mead)
- Sublease through 5/31/2028

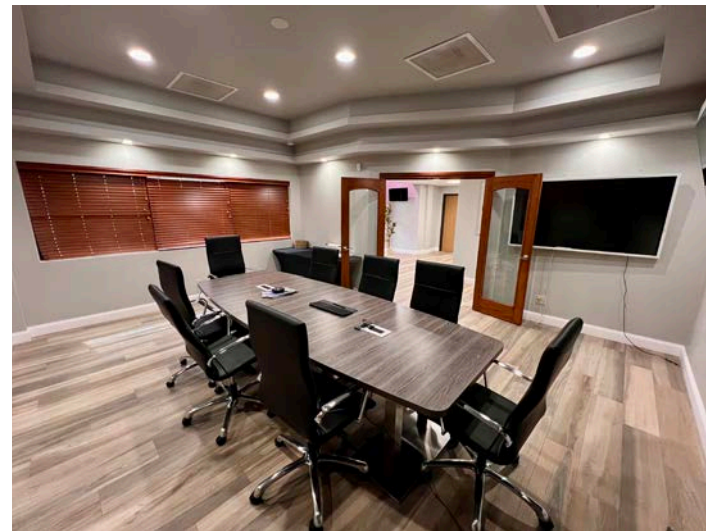
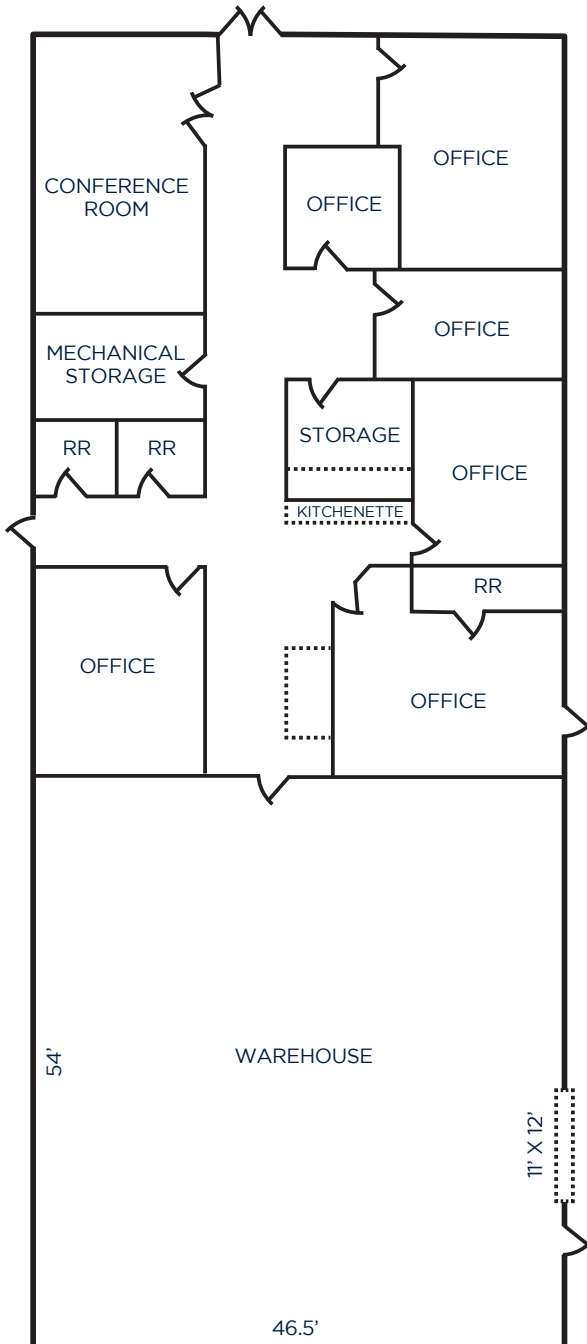
PROPERTY FEATURES & FLOOR PLAN

FOR SUBLEASE

14439 MEAD COURT • LONGMONT, CO 80504

PROPERTY FEATURES:

- Open warehouse with one drive-in door
- Trailer parking
- Gas heat in warehouse and central air in office
- Air compressor lines in warehouse
- Six offices, large conference room, kitchenette and storage
- Three restrooms (one w/shower)
- Security camera system



SITE INFORMATION

FOR SUBLEASE

14439 MEAD COURT • LONGMONT, CO 80504

9.7

MILES
TO LONGMONT

35.1

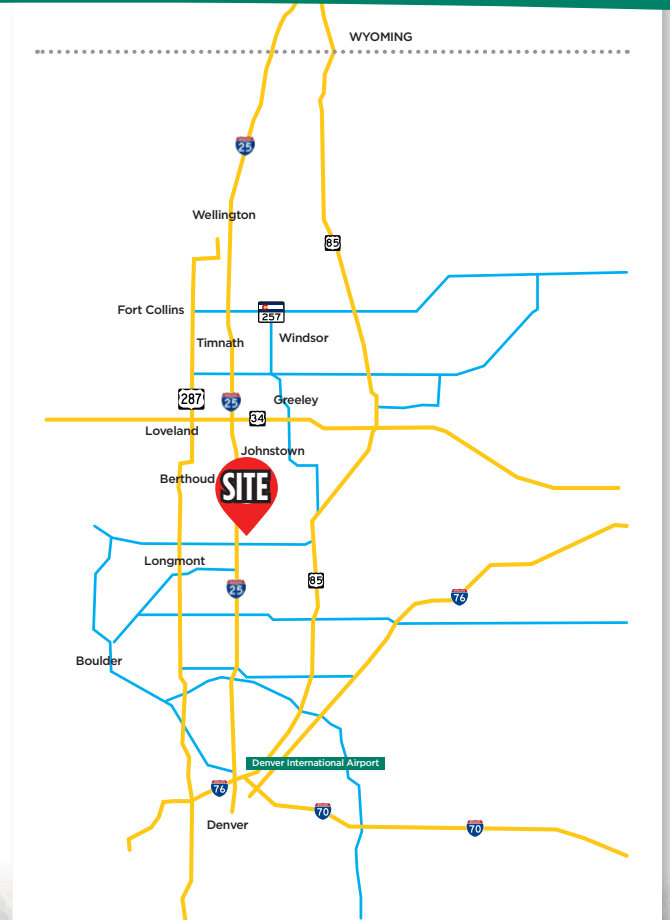
MILES
TO DENVER

37.4

MILES
TO DENVER
INTERNATIONAL
AIRPORT

68.7

MILES
TO CHEYENNE



Fort Collins

712 Whaler's Way, Bld. B, Suite 300
Fort Collins, CO 80525
970.229.9900

Loveland

200 E. 7th Street, Suite 418
Loveland, CO 80537
970.593.9900

Greeley

1711 61st Avenue, Suite 104
Greeley, CO 80634
970.346.9900

REALTEC
COMMERCIAL REAL ESTATE SERVICES