

# 24432

MUIRLANDS BLVD

FOR SALE

±2,148 SF MEDICAL CONDO







## PROPERTY FEATURES

- Common Area Interior and Exterior Renovations Underway
- Great Window Line
- In-Suite Restrooms
- Elevator Served
- Built int 1984
- Close Proximity to Memorial Care Hospital, Retail, and Residential
- Nearby Access to the 5 Freeway

## ASKING PRICE

- **SUITE 221:** ±2,148 SF (Vacant)
- **ASKING PRICE:** \$1,063,260 (\$495 PSF)
- **ASSOCIATION DUES:** \$0.62/SF/Month



**ALLEN BASSO**  
Lic. #01298152  
949.790.3130  
abasso@leeirvine.com



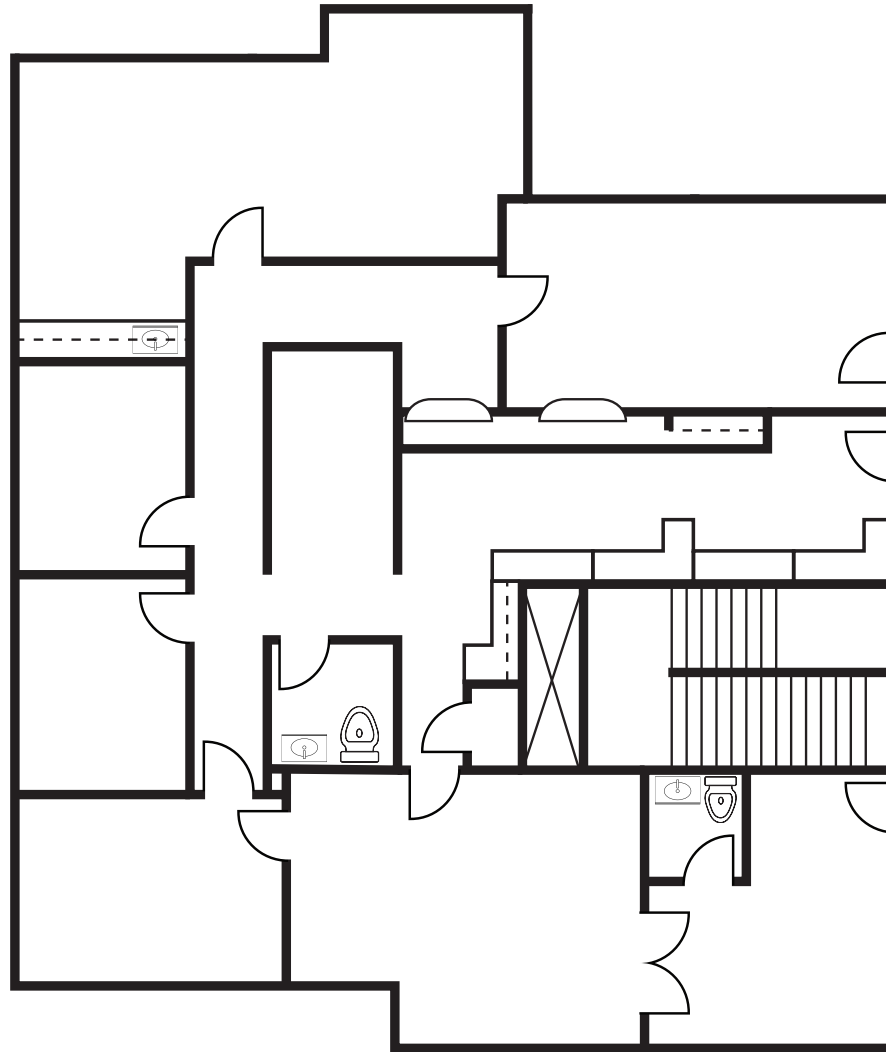
**ERIC DARNELL**  
Lic. #01888743  
949.460.3681  
edarnell@leeirvine.com



**KYLEE KING**  
Lic. #02101275  
949.790.3108  
kking@leeirvine.com



# 24432 MUIRLANDS BLVD - SUITE 221



**LEE & ASSOCIATES**  
COMMERCIAL REAL ESTATE SERVICES

**OC**  
OFFICE GROUP

The information contained herein has been obtained from the property owner or other third party and is provided to you without verification as to accuracy. We (Lee & Associates, its brokers, employees, agents, principals, officers, directors and affiliates) make no warranty or representation regarding the information, property, or transaction. You and your attorneys, advisors and consultants should conduct your own investigation of the property and transaction.

**ALLEN BASSO**  
Lic. #01298152  
949.790.3130  
abasso@leeirvine.com

**ERIC DARNELL**  
Lic. #01888743  
949.460.3681  
edarnell@leeirvine.com

**KYLEE KING**  
Lic. #02101275  
949.790.3108  
kking@leeirvine.com





**LEE & ASSOCIATES**  
COMMERCIAL REAL ESTATE SERVICES

**OC**  
OFFICE GROUP

The information contained herein has been obtained from the property owner or other third party and is provided to you without verification as to accuracy. We (Lee & Associates, its brokers, employees, agents, principals, officers, directors and affiliates) make no warranty or representation regarding the information, property, or transaction. You and your attorneys, advisors and consultants should conduct your own investigation of the property and transaction.

**ALLEN BASSO**  
Lic. #01298152  
949.790.3130  
abasso@leeirvine.com

**ERIC DARNELL**  
Lic. #01888743  
949.460.3681  
edarnell@leeirvine.com

**KYLEE KING**  
Lic. #02101275  
949.790.3108  
kking@leeirvine.com



# NEARBY AMENITIES



## FOREST RIDGE PLAZA



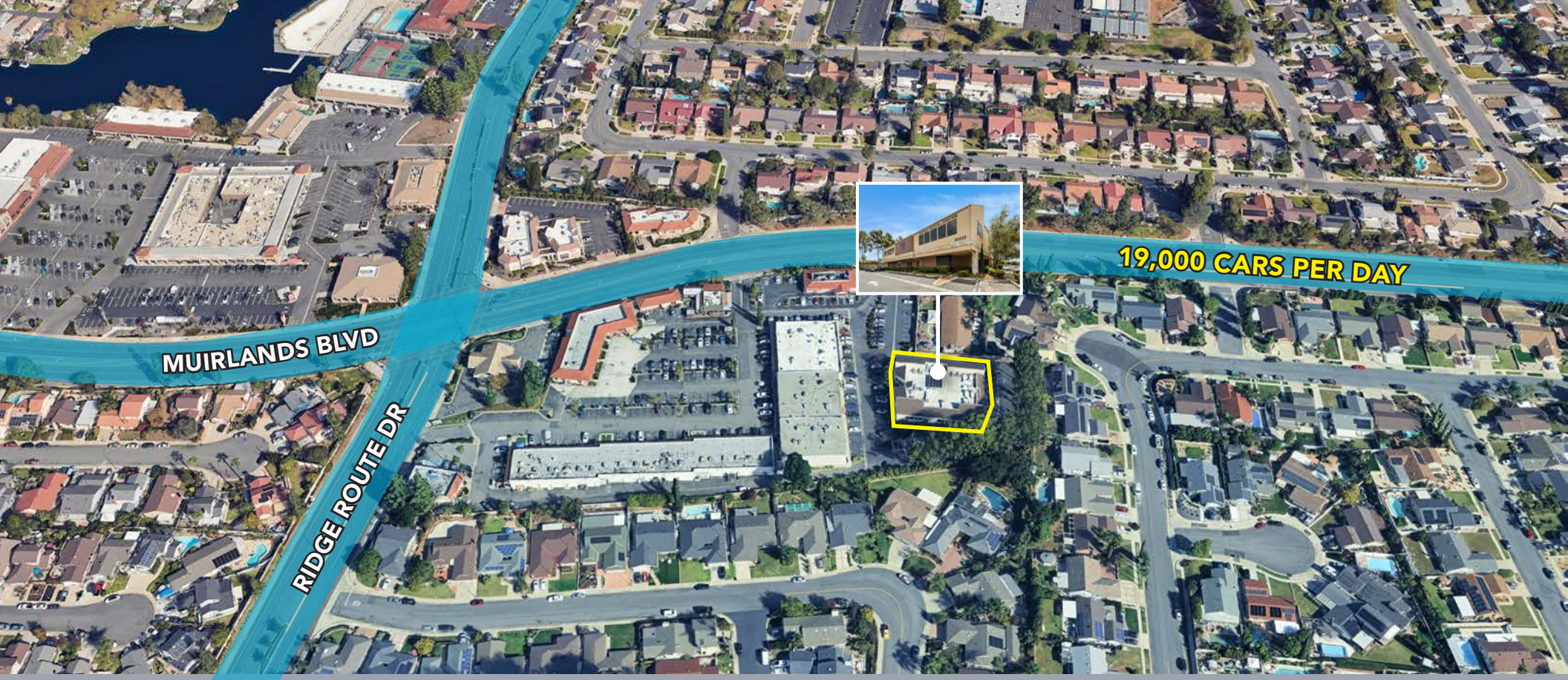
The information contained herein has been obtained from the property owner or other third party and is provided to you without verification as to accuracy. We (Lee & Associates, its brokers, employees, agents, principals, officers, directors and affiliates) make no warranty or representation regarding the information, property, or transaction. You and your attorneys, advisors and consultants should conduct your own investigation of the property and transaction.

**ALLEN BASSO**  
Lic. #01298152  
949.790.3130  
abasso@leeirvine.com

**ERIC DARNELL**  
Lic. #01888743  
949.460.3681  
edarnell@leeirvine.com

**KYLEE KING**  
Lic. #02101275  
949.790.3108  
kking@leeirvine.com





**ALLEN BASSO**

Lic. #01298152

949.790.3130

abasso@leeirvine.com



**ERIC DARNELL**

Lic. #01888743

949.460.3681

edarnell@leeirvine.com



**KYLEE KING**

Lic. #02101275

949.790.3108

kking@leeirvine.com

# 24432

## MUIRLANDS BLVD

### FOR SALE

±2,148 SF MEDICAL CONDO



COMMERCIAL REAL ESTATE SERVICES



The information contained herein has been obtained from the property owner or other third party and is provided to you without verification as to accuracy. We (Lee & Associates, its brokers, employees, agents, principals, officers, directors and affiliates) make no warranty or representation regarding the information, property, or transaction. You and your attorneys, advisors and consultants should conduct your own investigation of the property and transaction.