

FOR LEASE



METROPOLITAN PACIFIC
REAL ESTATE GROUP



1,459 SF Corner Retail 319 Wilshire Boulevard Santa Monica, CA

- Signalized Corner: Amazing visibility on NWC of Fourth Street and Wilshire Blvd- one of Santa Monica's highest trafficked corners
- Strong Tenant Mix: Join national and regional tenants-T-Mobile, LensCrafters, Hillstone, The Bungalow, and more!
- Highly visible corner location.
- Ideal size and configuration for personal service, general retail, or non-hooded food uses (241 sf mezzanine with full bath not included in rentable sf).
- Nearby Established Retailers: In close proximity to retailers and restaurants on 3rd Street Promenade (1.75M monthly visitors)
- Easy access and excellent nearby City parking with first 90 minutes free - two structures within 100'

CONTACT

310 395 7300

METROPOLITAN PACIFIC

DRE #01395401

Gary Steinhardt

DRE #02151907

gsteinhardt@metpac.com

John Warfel

DRE# 01184386

jwarfel@metpac.com

REPRESENTED BY METROPOLITAN COMMERCIAL REAL ESTATE SERVICES

Please do not disturb existing tenant. Shown by appointment only.

319 Wilshire Blvd. Santa Monica, CA

**Open plan with
multiple
restrooms, break
room, W/D
hookups**

**241 SF Mezzanine
not included in
square footage**

**2 Parking
structures less
than 100' away
offering 90
minutes free**

**Plentiful nearby
amenities**



CONTACT

310 395 7300

METROPOLITAN PACIFIC

DRE #01395401

Gary Steinhardt

DRE #02151907

gsteinhardt@metpac.com

John Warfel

DRE# 01184386

jwarfel@metpac.com



REPRESENTED BY METROPOLITAN COMMERCIAL REAL ESTATE SERVICES

Please do not disturb existing tenant. Shown by appointment only.

319 Wilshire Blvd. Santa Monica, CA

**Excellent
cotenants draw
daily traffic**

Ample Glass Line

Corner location

**Plug and play
space**

**Thoughtful back
of the house
infrastructure**



CONTACT

310 395 7300

METROPOLITAN PACIFIC

DRE #01395401

Gary Steinhardt

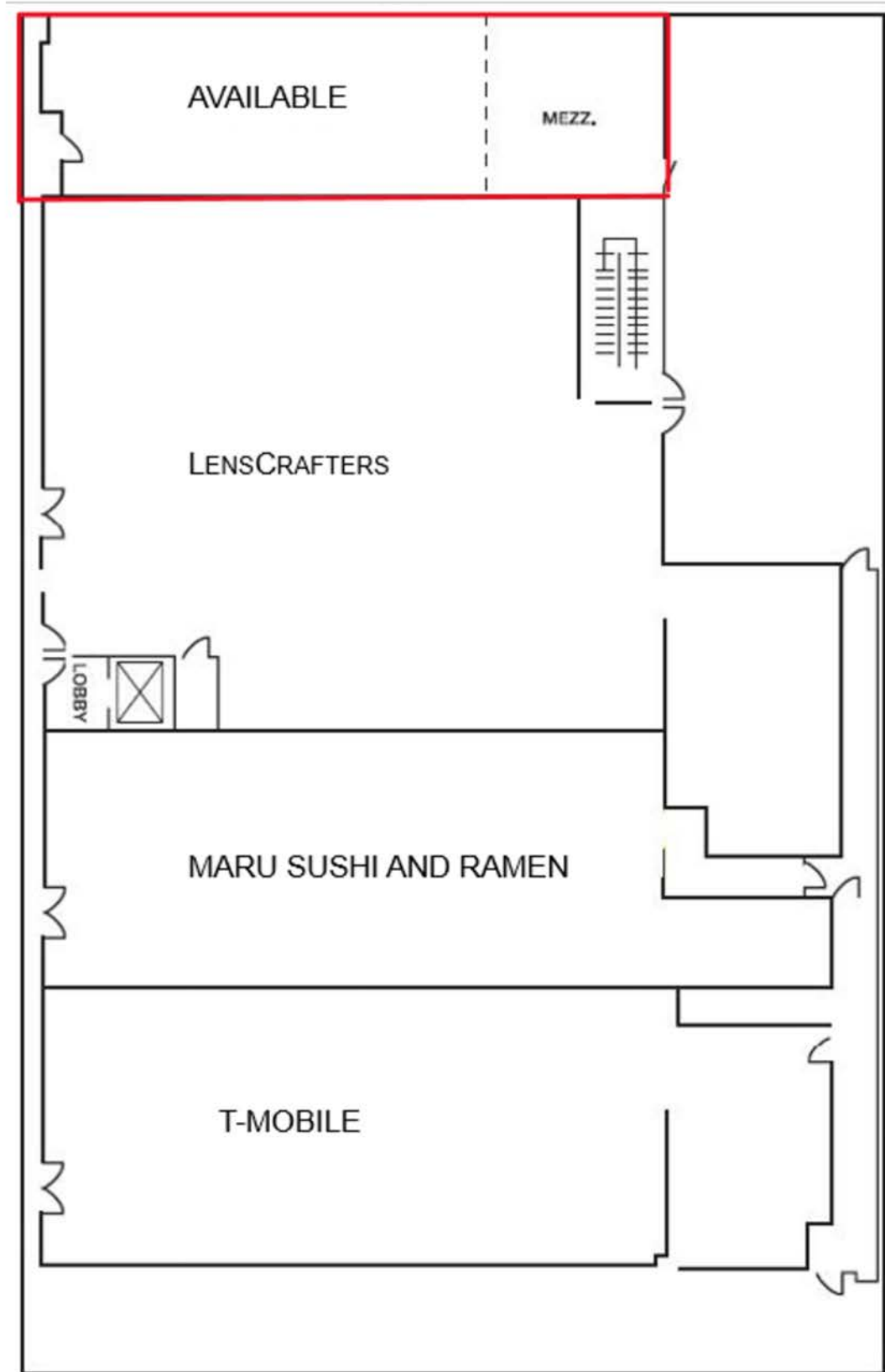
DRE #02151907

gsteinhardt@metpac.com

John Warfel

DRE# 01184386

jwarfel@metpac.com



REPRESENTED BY METROPOLITAN COMMERCIAL REAL ESTATE SERVICES

Please do not disturb existing tenant. Shown by appointment only.

319 Wilshire Blvd. Santa Monica, CA

**Half a block from
Third Street
Promenade on
North Side of
Wilshire**

**Surrounded by
restaurants and
free public
parking**

**High profile
corner**



CONTACT

310 395 7300

METROPOLITAN PACIFIC

DRE #01395401

Gary Steinhardt

DRE #02151907

gsteinhardt@metpac.com

John Warfel

DRE# 01184386

jwarfel@metpac.com

REPRESENTED BY METROPOLITAN COMMERCIAL REAL ESTATE SERVICES

Please do not disturb existing tenant. Shown by appointment only.