

# Parklane Office Park

at Parklane Shopping Center

1107-1115 S. Glendale Ave., Wichita, KS 67218



## PROPERTY HIGHLIGHTS

- Located on the lower level of the Parklane Shopping Center
- 24,000+ Vehicles per day
- Ample Parking
- Quick access to US-400 (Kellogg Ave)
- Zoned Limited Commercial
- Private Executive Offices

## DEMOGRAPHICS

	1 Mile	3 Miles	5 Miles
Population	22,917	72,800	91,070
Avg. HH Income	\$45,745	\$48,704	\$56,914
Median Age	35.5	31	33

## AVAILABLE SPACES

### 1005 S. Glendale, Suite 110

6,000 SF \$8.50 psf. Modified Gross

### 1115 S. Glendale, Suite 110

500 SF \$ 675.00/mo. MG

Large lobby with two private offices.

### 1115 S. Glendale, Suite 208

1,000 SF \$ 1,060.00/mo. MG

Large lobby with two private offices, large workroom and private restroom.

**BUILDERS INCORPORATED**  
1081 South Glendale  
Wichita, Kansas 67218  
Buildersinc.com

ESTABLISHED 1942

**BUILDERS INCORPORATED**

Wanda Whitworth **316.684.1400**

# Parklane Office Park

at Parklane Shopping Center

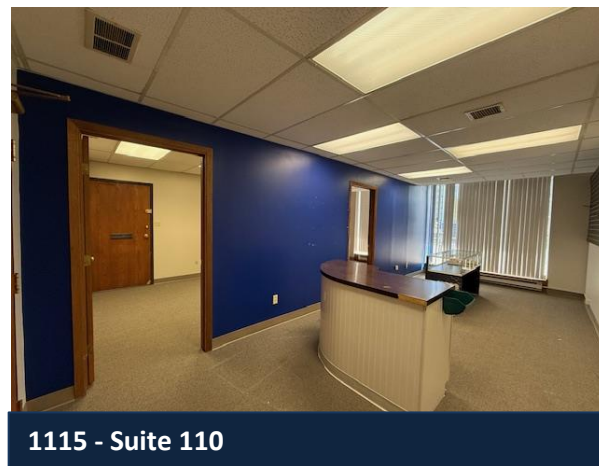
1107-1115 S. Glendale Ave., Wichita, KS 67218



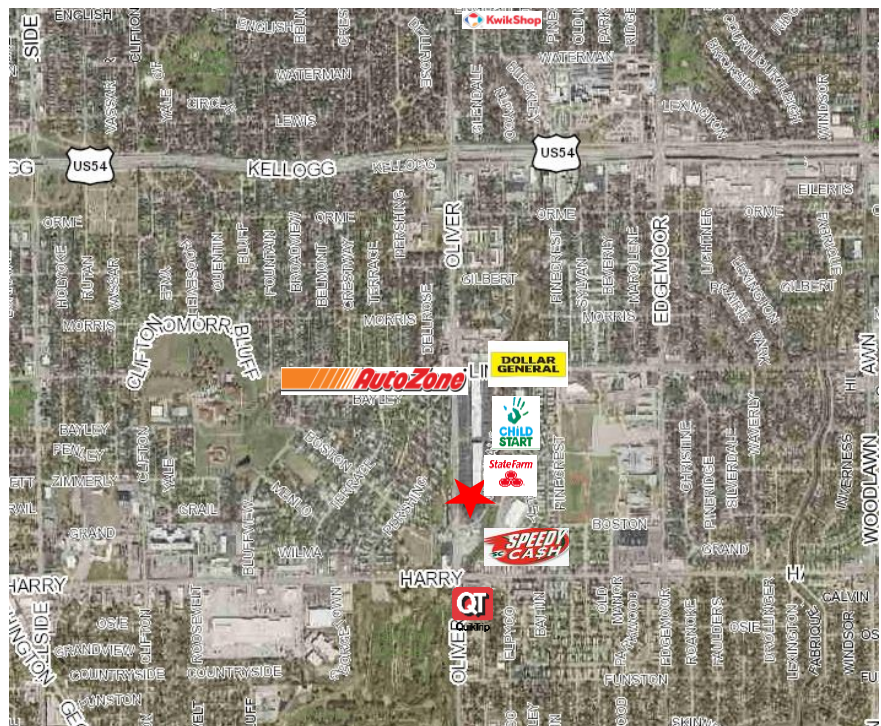
1115 - Suite 208



1115 - Suite 208



1115 - Suite 110



BUILDERS INCORPORATED  
1081 South Glendale  
Wichita, Kansas 67218  
Buildersinc.com

ESTABLISHED 1942  
**BUILDERS INCORPORATED**

316.684.1400