

40 GARDEN ST

POUGHKEEPSIE, NY 12601

BUILDING OVERVIEW



OFFERING SUMMARY

Suite Prices	\$450-\$1,100/month
Suite Sizes	125-308 SF
Total Units	10

PROPERTY OVERVIEW

Executive Offices in Premium Building
 Suites have access to shared conference room and kitchenette.
 Municipal parking adjacent to the building.
 Secure entry.
 Various sizes available.

LOCATION OVERVIEW

Prime location on the corner of Garden St and westbound arterial Rt. 55/44, with direct access to the municipal parking garage. Close to the convention center, city hall, post office, attorney offices, restaurants, and more.

40 GARDEN ST

POUGHKEEPSIE, NY 12601

SUITE 101

SUITE DETAILS

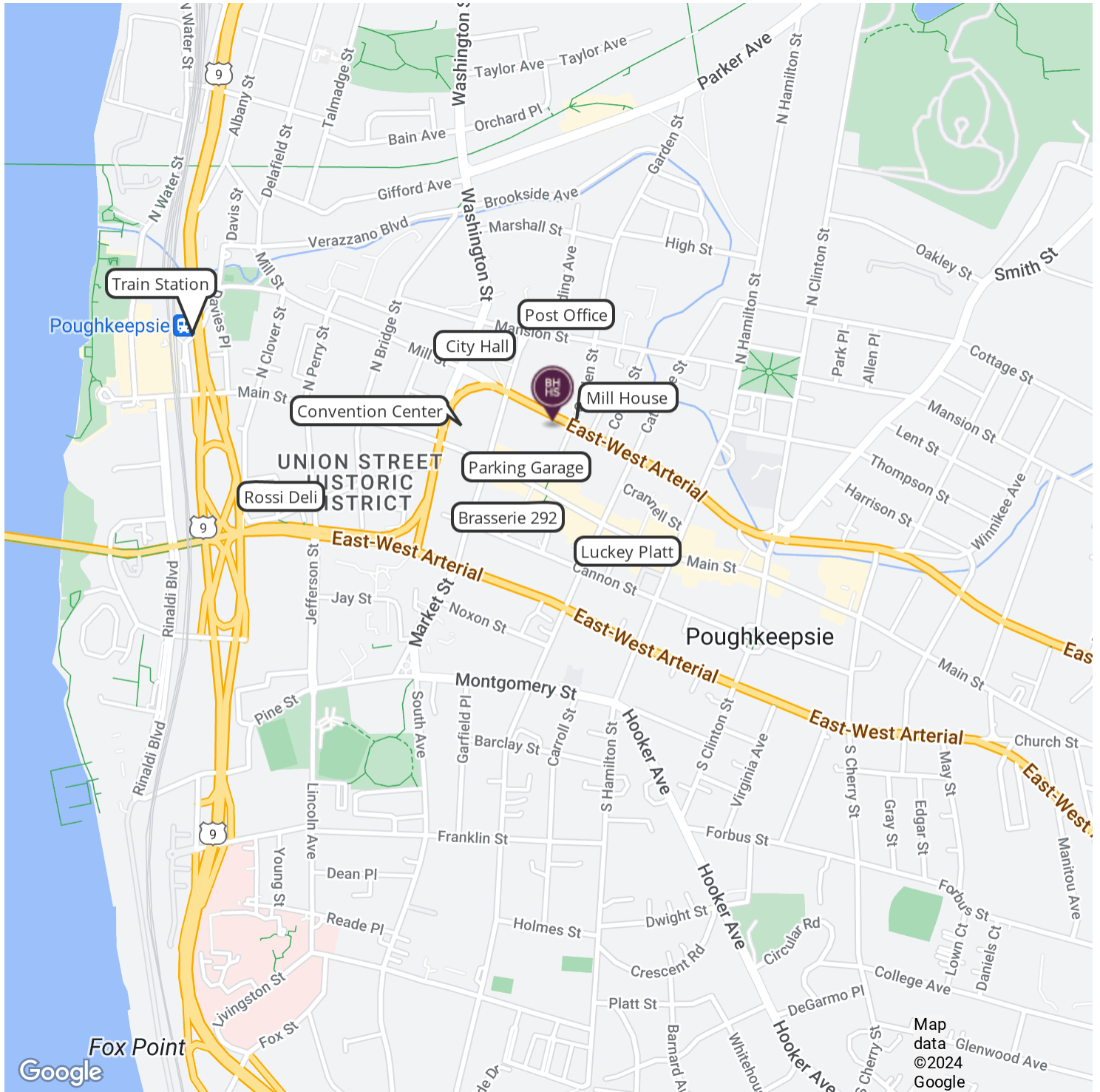
- Suite 1
280 sf | Rate \$900
- Suite 2
154 sf | Rate \$600
- Suite 3
225 sf | Rate \$750
- Suite 4
308 sf | Rate \$1100 | two offices
- Suite 5
154 sf | Rate \$600
- Suite 6
154 sf | Rate \$600
- Suite 7
140 sf | Rate \$450
- Suite 8
285 sf | Rate \$850
- Suite 9
200 sf | Rate \$700
- Suite 10
125 sf | Rate \$450



40 GARDEN ST

POUGHKEEPSIE, NY 12601

LOCATION MAP

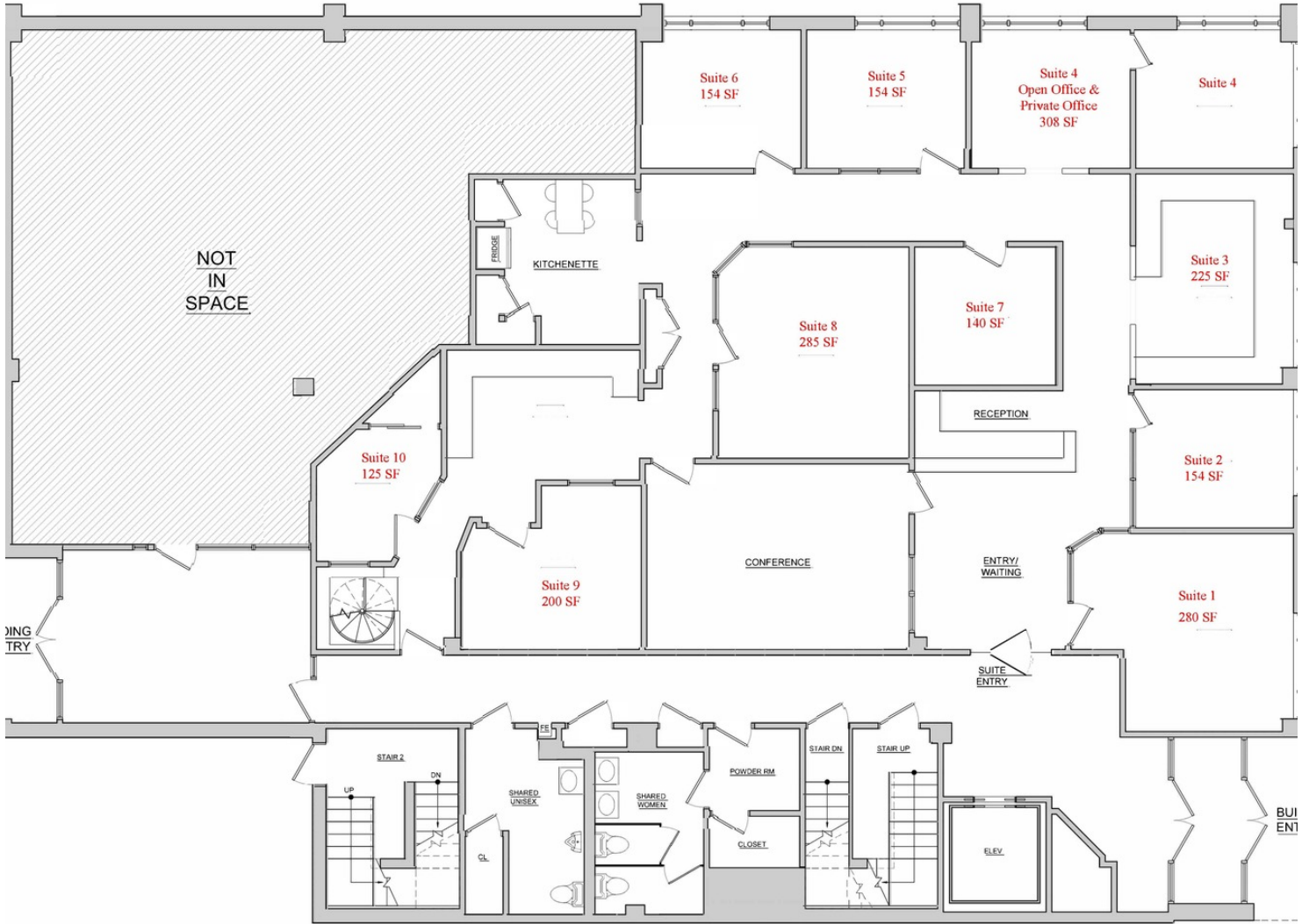


40 GARDEN ST

POUGHKEEPSIE, NY 12601

ADDITIONAL PHOTOS

40 Garden St



R