

5380

S RAINBOW BLVD

LAS VEGAS, NV 89118

**SPRING VALLEY
MEDICAL OFFICE I
FOR LEASE**

**SUITES RANGING FROM
2,003 - 3,928 SF**



MIKE TYMCZYN

VICE PRESIDENT
702.216.2371 **DIRECT**
miket@dcghealthcare.com
S.177844



HEALTHCARE

CORFAC
INTERNATIONAL

PROPERTY HIGHLIGHTS

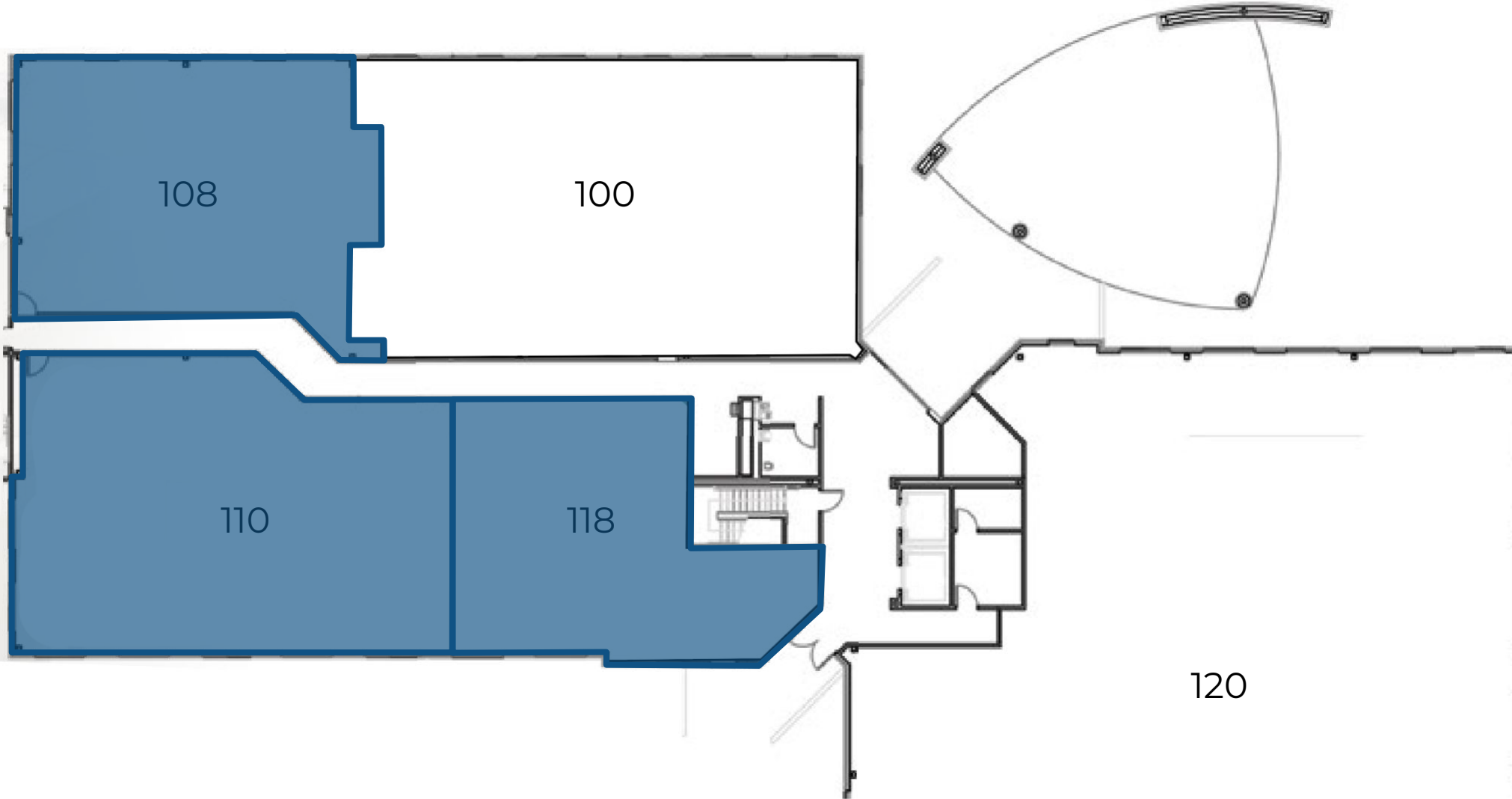
- On the campus of Spring Valley Hospital Medical Center
- Covered, reserved parking at no additional cost
- Easy access from I-15 and I-215
- Current specialties include: **Cardiology - Neurology - Internal Medicine - Podiatry**



FIRST FLOOR

AVAILABLE SUITES

SUITE 108	2,285 SF
SUITE 110	2,780 SF
SUITE 118	2,003 SF



SECOND FLOOR

AVAILABLE SUITES

SUITE 210	2,300 SF
-----------	----------



THIRD FLOOR

AVAILABLE SUITES

SUITE 330	3,928 SF
-----------	----------

