

INDU
STRY

CREATIVE OFFICE SPACE
± 4,172 TO ± 9,602 RSF

13160 MINDANAO WAY MARINA DEL REY

FOR LEASE



INDUSTRYPARTNERS.COM
310 395 5151
CA BRE No. 01900833

TRAVIS LANDRUM
dp@industrypartners.com
CA BRE No. 01435827

FOR LEASE

CREATIVE OFFICE

13160 MINDANAO WAY MARINA DEL REY CA 90292

SUITE	AVAILABLE RSF	RATE	TERM	OCCUPANCY	PARKING
Ground Floor					
Suite A	±5,277 RSF	Negotiable	5-10 Years	Immediate	4 per 1,000 SF
Suite D	±7,289 RSF				
Second Floor					
Suite 201	±9,602 RSF				
Suite 207	±5,559 RSF				
Third Floor					
Suite 350	± 4,172 RSF				

Creative office building in the heart of Marina Del Rey

FEATURES

Creative campus setting in the heart of Marina Del Rey

Abundant and walkable lunch spots, minutes away from the marina, beach, and nature reserves

Quick access to LAX and freeways

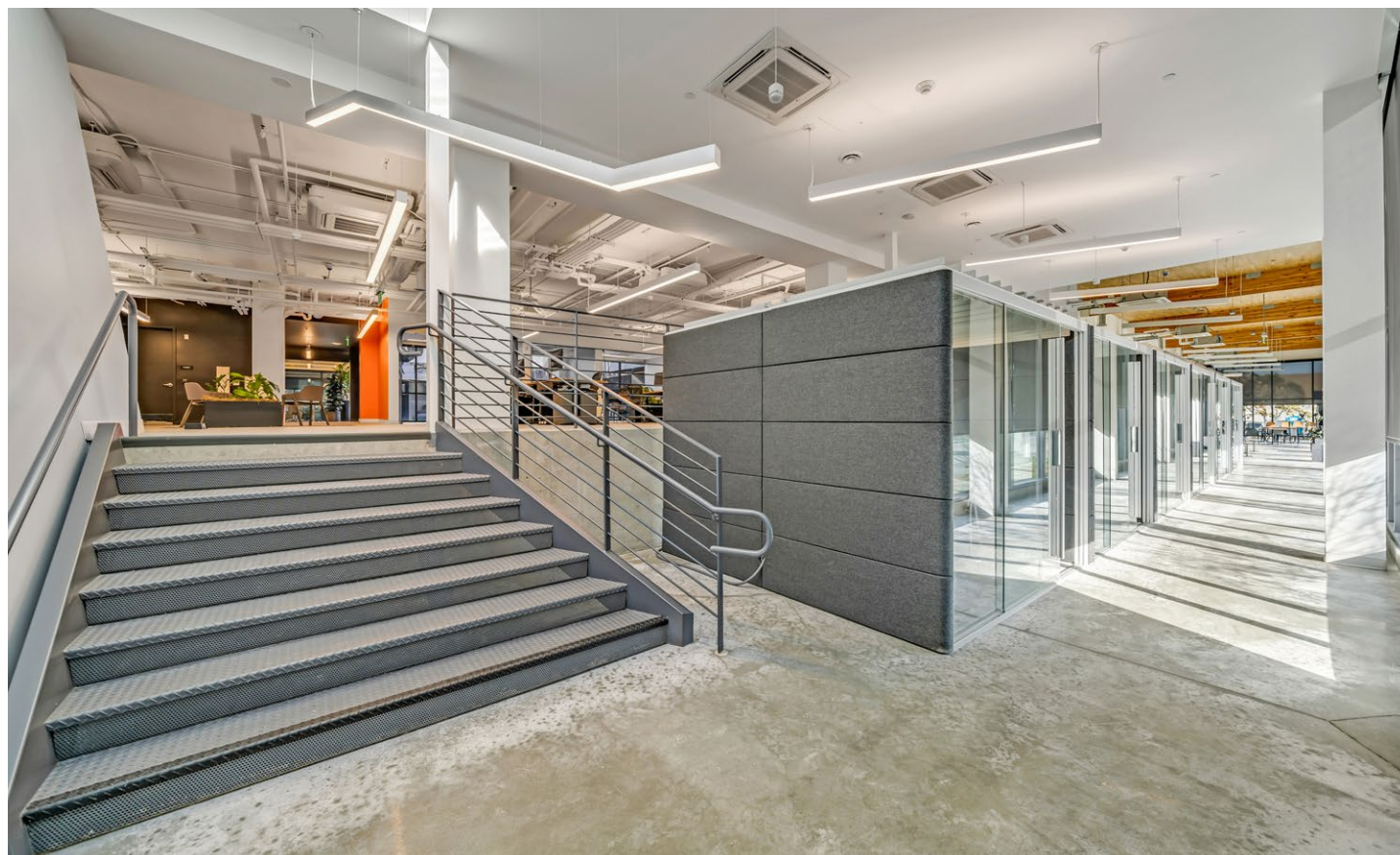
Architecture by HansonLA

Bright interiors with exposed high ceilings and polished concrete floors

Expansive floor plan with a combination of open work areas and private executive offices

Abundant on-site parking

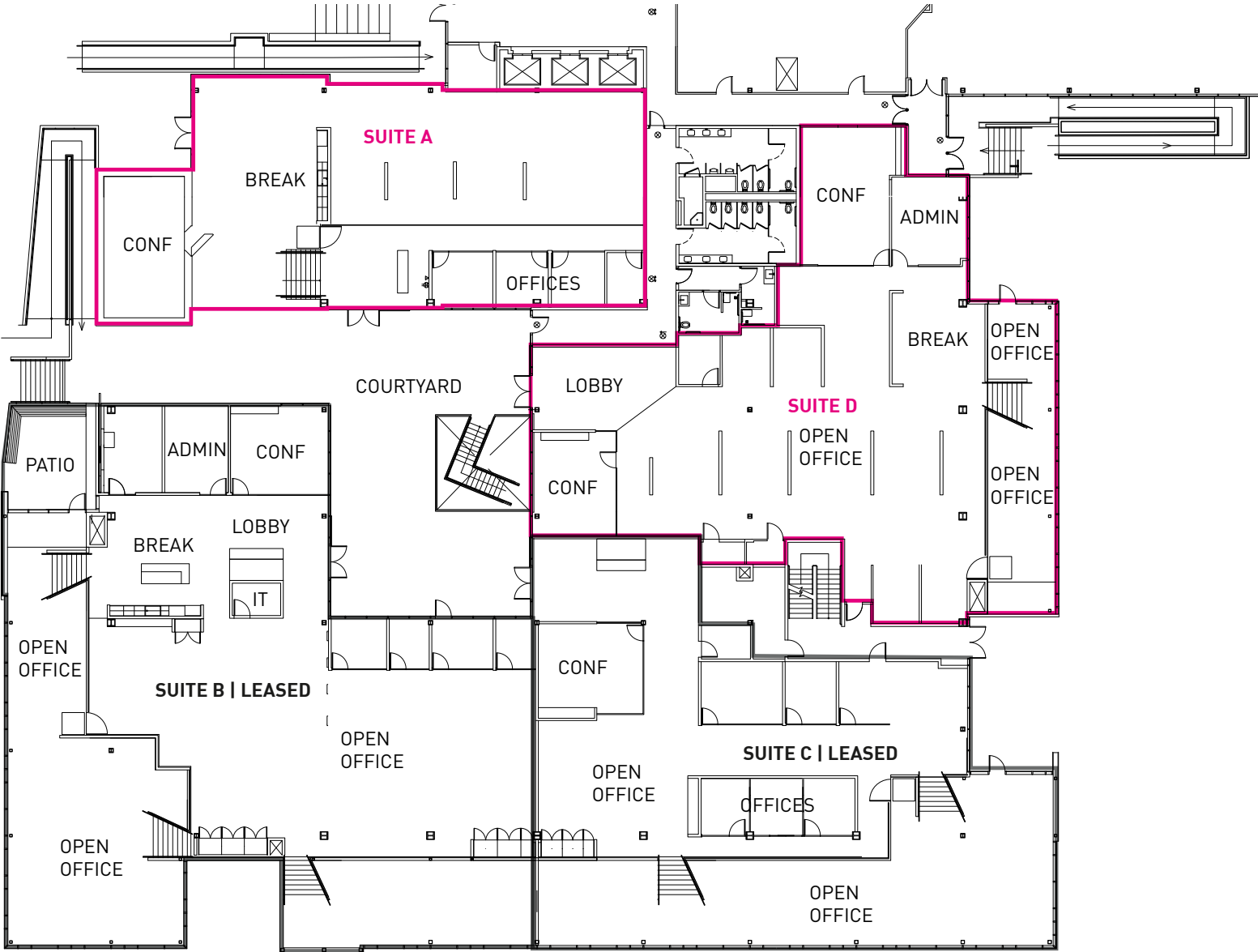
Spec suites available



No warranty or representation is made to the accuracy of the foregoing information. Terms of sale or lease are subject to change or withdrawal without notice.

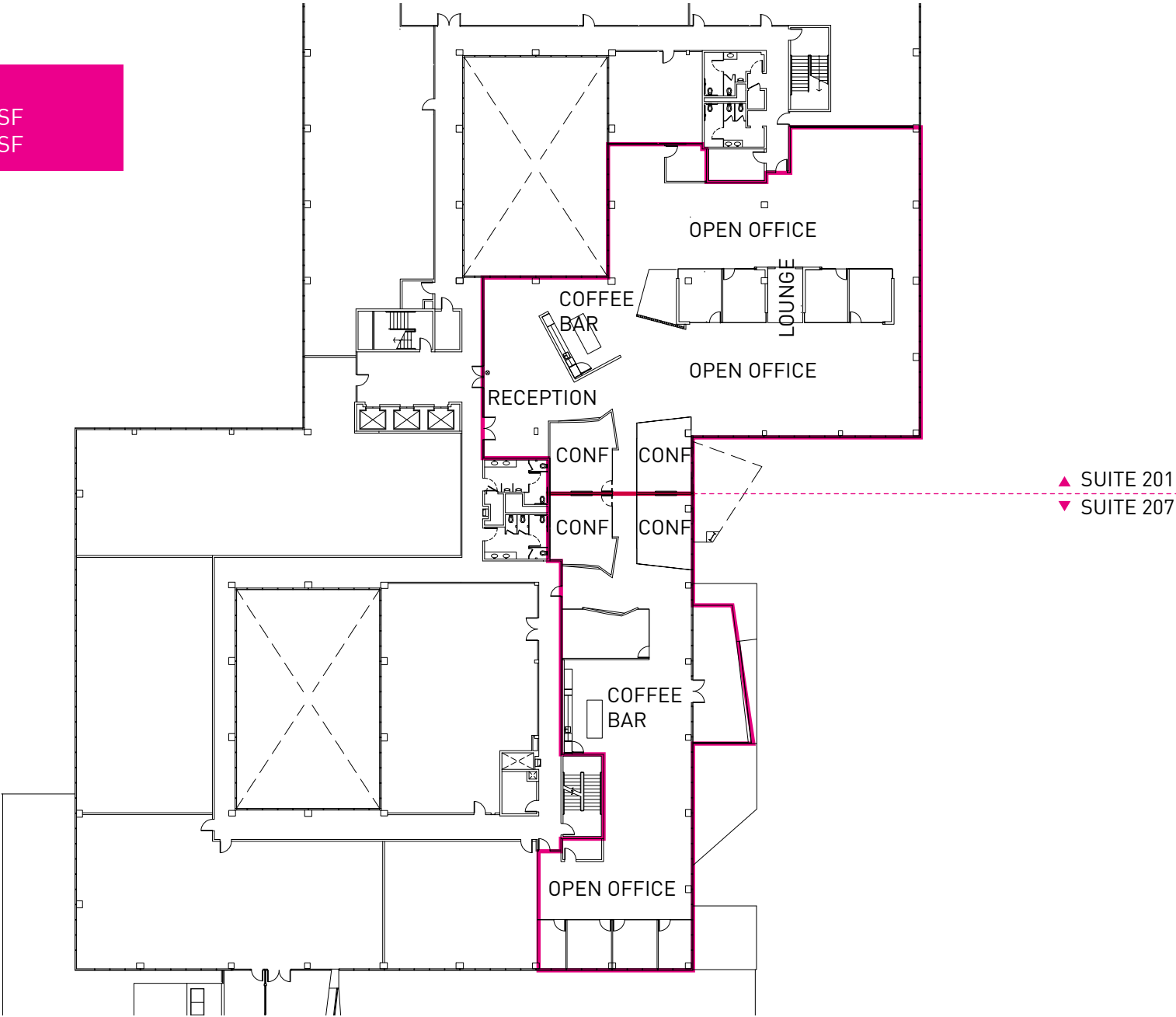
©2023 INDUSTRY PARTNERS, INC.

GROUND FLOOR
Ste A ± 5,277 RSF
Ste D ± 7,289 RSF

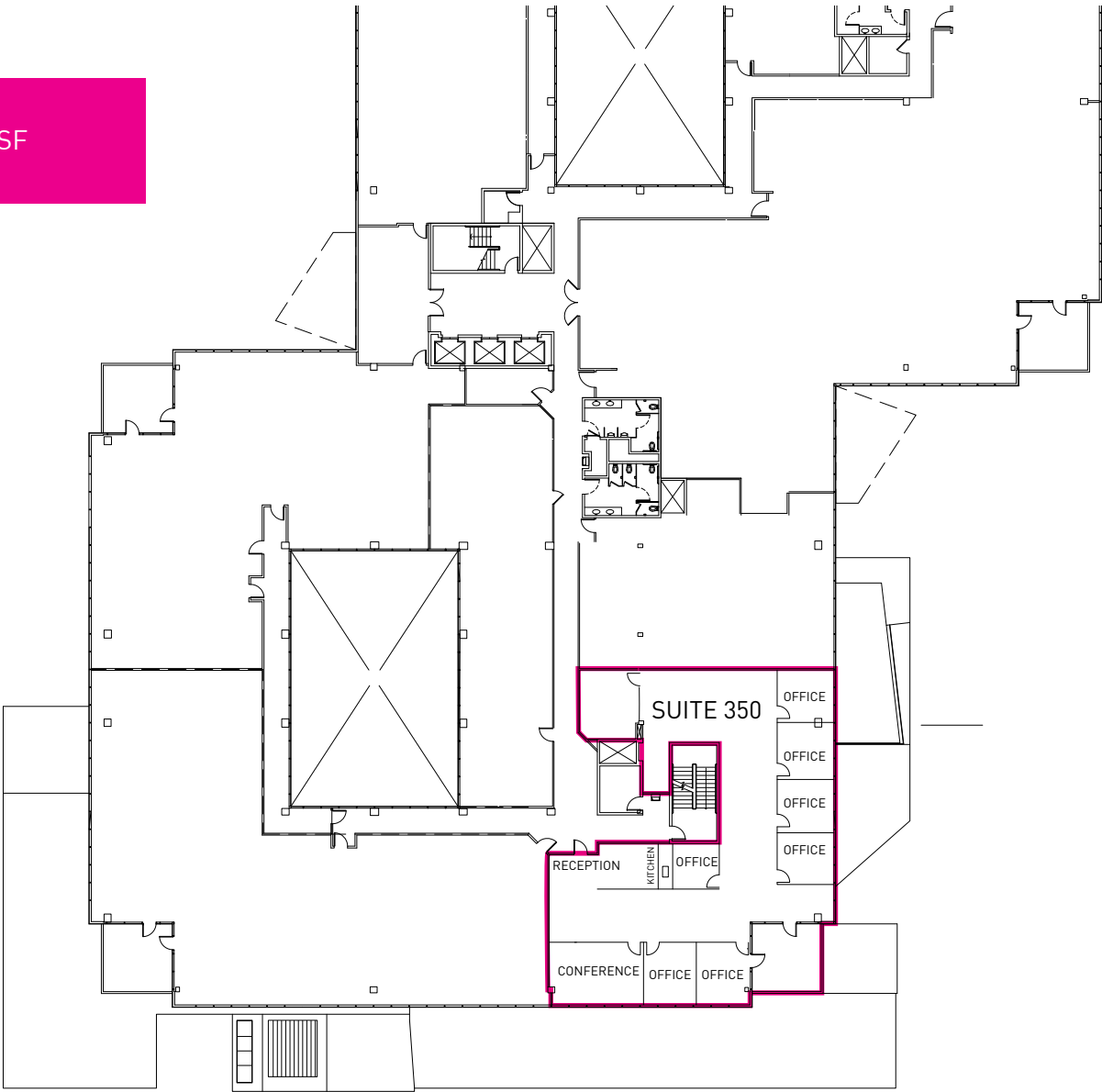


Not to Scale.
Floor plan for information
purposes only.

SECOND FLOOR
Ste 201 ± 9,602 RSF
Ste 207 ± 5,559 RSF



THIRD FLOOR
Ste 350 ± 4,172 RSF



FOR LEASE

CREATIVE OFFICE

13160 MINDANAO WAY MARINA DEL REY CA 90292

GROUND FLOOR PHOTOS



FOR LEASE

CREATIVE OFFICE

13160 MINDANAO WAY MARINA DEL REY CA 90292

SECOND FLOOR PHOTOS



FOR LEASE

CREATIVE OFFICE

13160 MINDANAO WAY MARINA DEL REY CA 90292

COMMON AREA PHOTOS



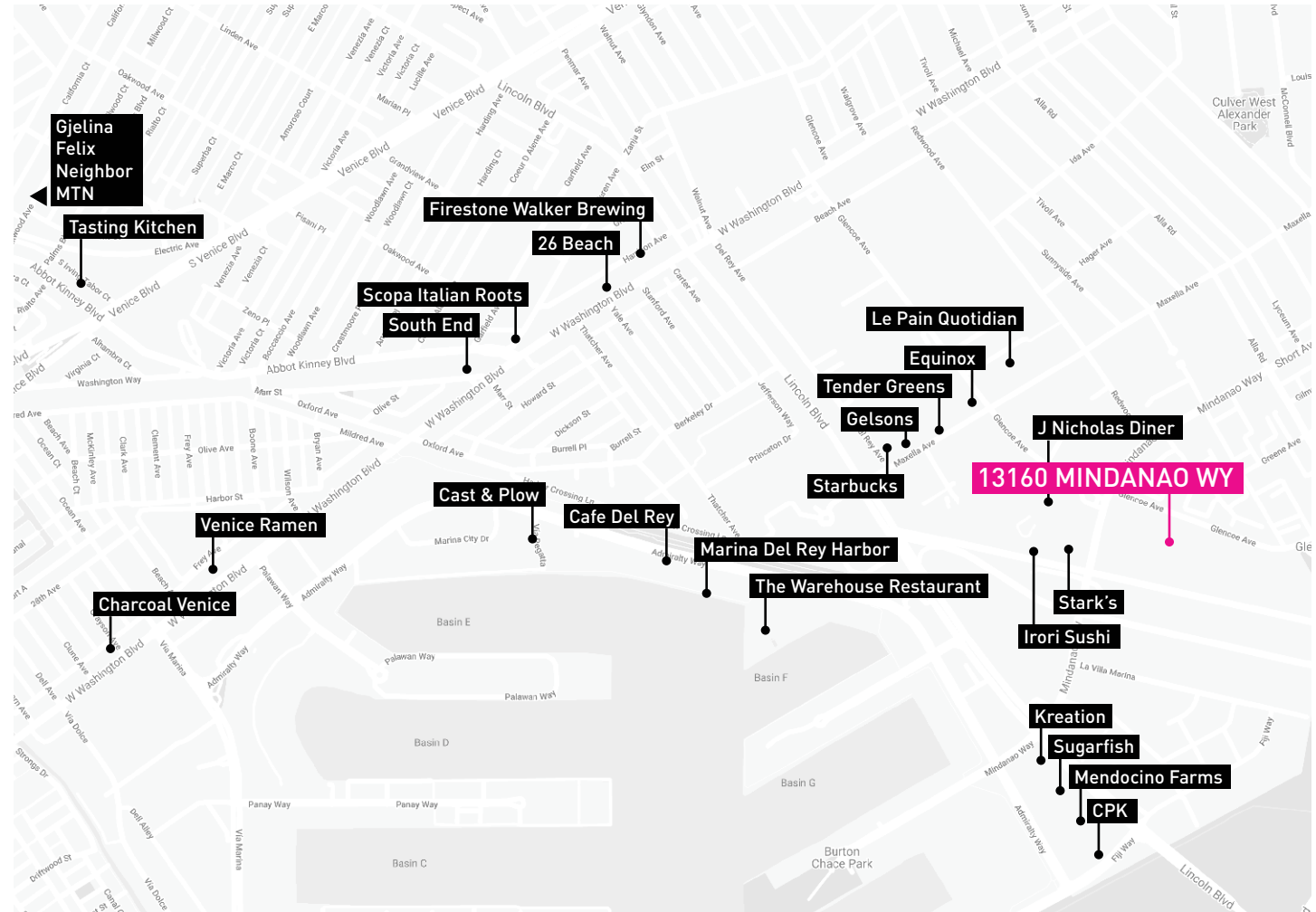
About the neighborhood

Marina del Rey is an unincorporated seaside community in LA County, with a marina that is a major boating and water recreation destination.

The marina is North America's largest man-made small-craft harbor and is home to approximately 5,000 boats.

The area is a popular tourism destination for water activities such as paddle board and kayak rentals, dining cruises, and yacht charters.

This Westside locale is approximately 4 miles (6.4 km) south of Santa Monica, and 4 miles north of LAX.



No warranty or representation is made to the accuracy of the foregoing information. Terms of sale or lease are subject to change or withdrawal without notice.

©2023 INDUSTRY PARTNERS, INC.