

# FOR LEASE | 1901 OLYMPIC BLVD

## OFFICE SPACES IN WALNUT CREEK



**Clayton Temple**  
Sales & Leasing Associate

925.296.3311

[clayton.temple@tricommercial.com](mailto:clayton.temple@tricommercial.com)

LIC: #02006440

# 1901 OLYMPIC BLVD

OFFICE SPACE AVAILABLE  
JUST OFF I-680 IN WALNUT CREEK

- Parking - 3 spaces / 1,000 sf
- Convenient access to freeway
- High visibility location
- Within walking distance to numerous retail and restaurant amenities in Downtown Walnut Creek
- 1901 Olympic Blvd. is a 23,000 square foot, three story office building located directly off the Interstate 680 Olympic Blvd. exit. This desirable location offers high visibility and convenient access from Highway 24 and Interstate 680. There are multitude of retail and restaurant amenities within walking distance including the newly developed Plaza Escuela Center, Broadway Plaza and Olympic Place.
- **Lease Rate: \$2.25/mo Full Service**



Demographics	1 Mi	2 Mi	3 Mi
Households	6,731	23,376	45,283
Population	14,287	48,868	96,313
Avg HH Income	\$95,546	\$102,891	\$107,102

## Clayton Temple

925.296.3311

clayton.temple@tricommercial.com

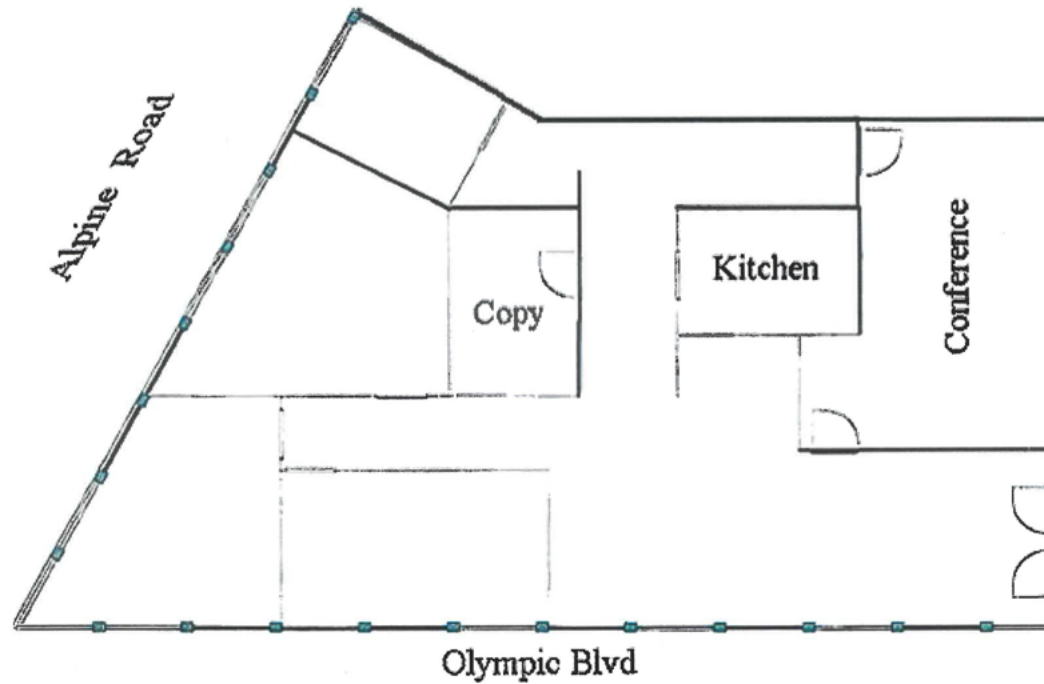
LIC: #02006440



www.tricommercial.com

# 1901 OLYMPIC BLVD

OFFICE SPACE AVAILABLE  
JUST OFF I-680 IN WALNUT CREEK



**Suite 100**  
**±2,190 RSF**

**Clayton Temple**

925.296.3311

clayton.temple@tricommercial.com

LIC: #02006440

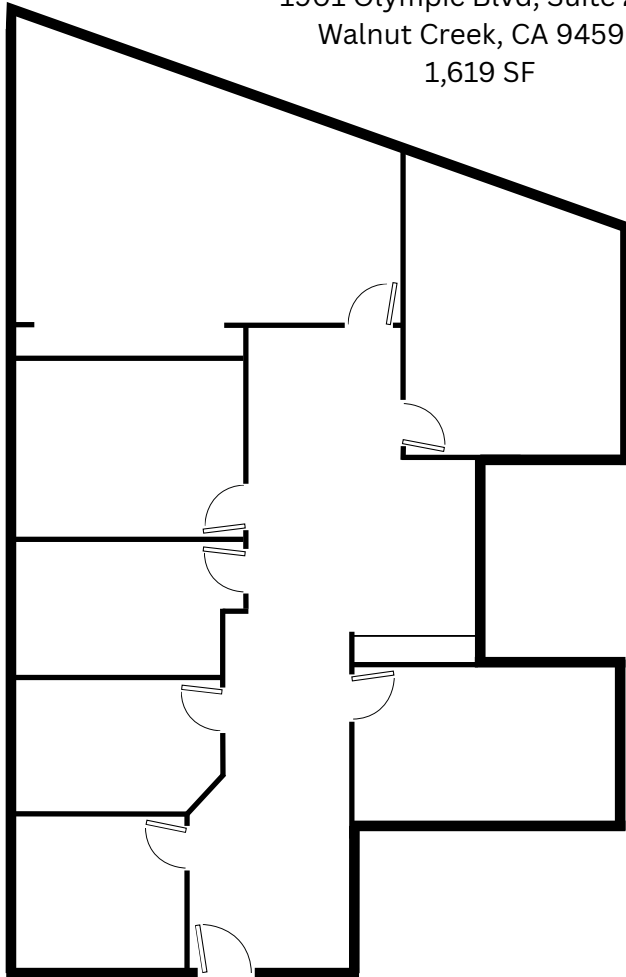


[www.tricommercial.com](http://www.tricommercial.com)

# 1901 OLYMPIC BLVD

OFFICE SPACE AVAILABLE  
JUST OFF I-680 IN WALNUT CREEK

1901 Olympic Blvd, Suite 230  
Walnut Creek, CA 94596  
1,619 SF



\*not to scale\*

**Clayton Temple**

925.296.3311

clayton.temple@tricommercial.com

LIC: #02006440

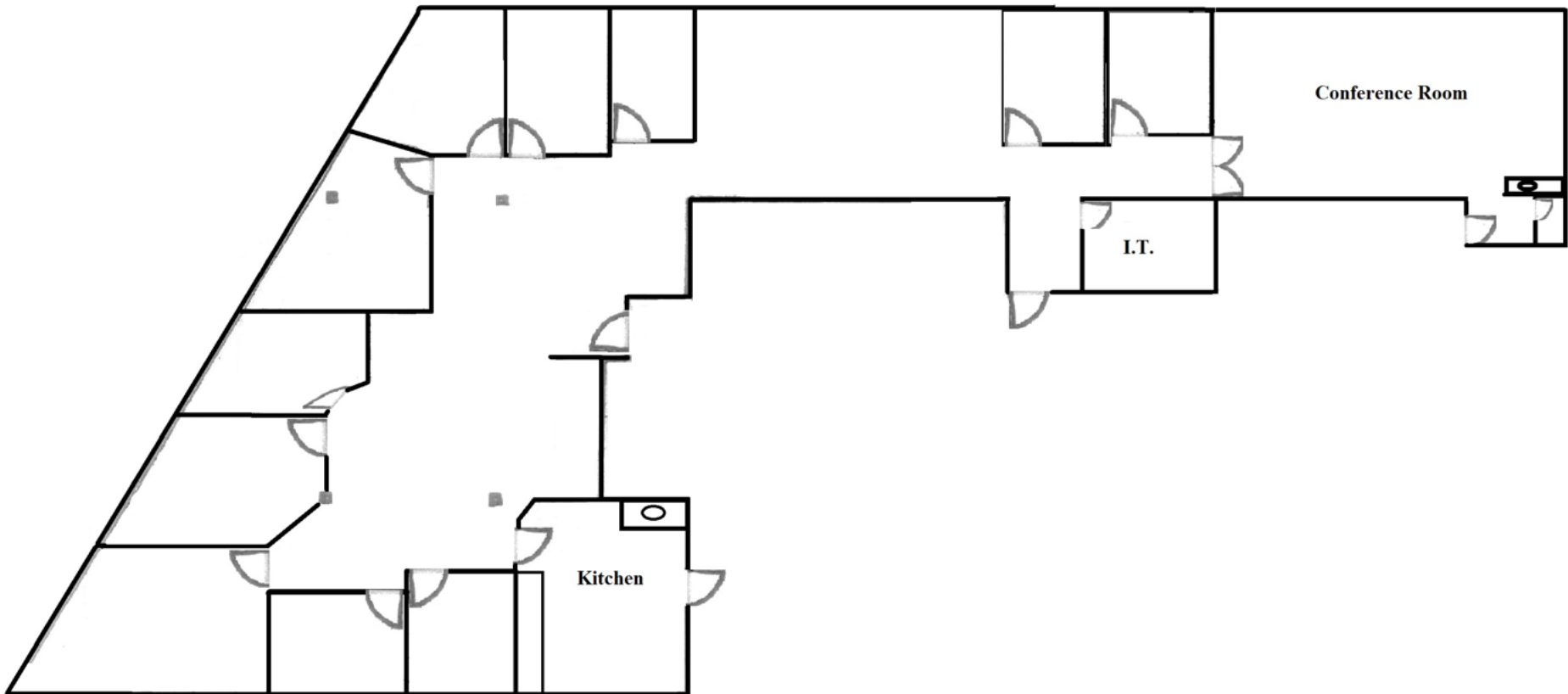


[www.tricommercial.com](http://www.tricommercial.com)

# 1901 OLYMPIC BLVD

OFFICE SPACE AVAILABLE  
JUST OFF I-680 IN WALNUT CREEK

## Suite 320 - 5,602 SF\*



**Clayton Temple**

925.296.3311

clayton.temple@tricommercial.com

LIC: #02006440



www.tricommercial.com