

WAREHOUSE FOR SALE

1021 Princess Anne Rd
Norfolk, VA 23504



ABOUT PROPERTY

- Building Size: 20,526 SF
- Site: 0.77 AC
- Zoned: I1
- Electric Service: 800 Amp 3-Phase
- Ceiling Height: 16 ft. clear
- Loading Doors: 2 - van ht. 12' high
1 - drive-in 14' high
- Office Area: ±2,220 SF
- New HVAC in office area
- Located in Enterprise, Hub and Opportunity Zone
- **Asking Price: \$2,150,000**



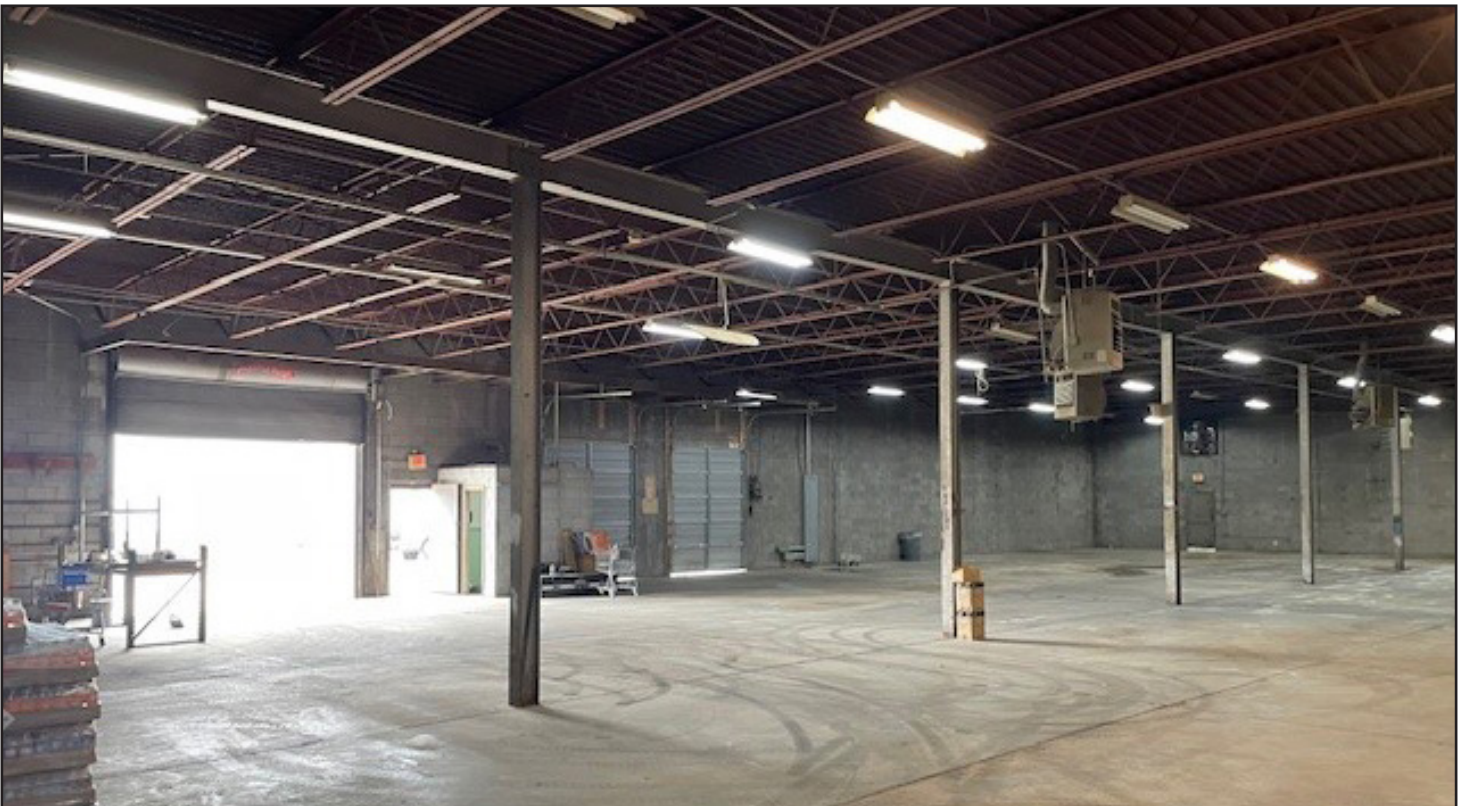
For more information
BOBBY BEASLEY, JR.
757.640.8252
BobBeasley@HarveyLindsay.com

HARVEY LINDSAY
COMMERCIAL REAL ESTATE

www.harveylindsay.com

WAREHOUSE FOR SALE

PHOTOS | 1021 Princess Anne Rd, Norfolk, VA 23504



For more information
BOBBY BEASLEY, JR.
757.640.8252
BobBeasley@HarveyLindsay.com

HARVEY LINDSAY
COMMERCIAL REAL ESTATE

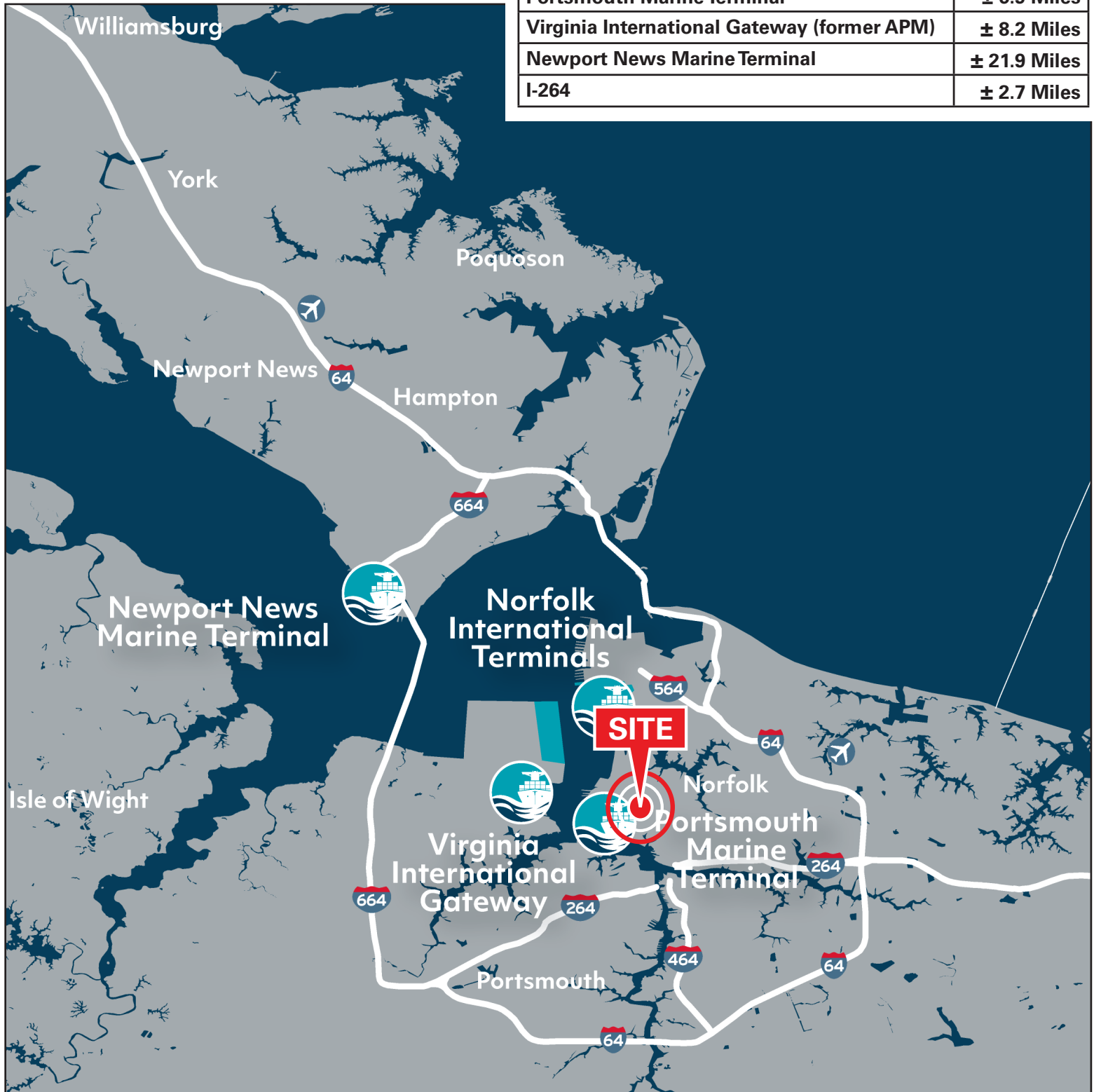
www.harveylindsay.com

WAREHOUSE FOR SALE

PORT MAP | 1021 Princess Anne Rd, Norfolk, VA 23504

DISTANCE TO PORTS (APPROXIMATE)

Norfolk International Terminal	± 5.6 Miles
Portsmouth Marine Terminal	± 6.9 Miles
Virginia International Gateway (former APM)	± 8.2 Miles
Newport News Marine Terminal	± 21.9 Miles
I-264	± 2.7 Miles



The information contained herein has been obtained from sources believed to be reliable but is not warranted. We cannot be responsible for errors, omissions, withdrawal, or prior lease or sale.

HARVEY LINDSAY
COMMERCIAL REAL ESTATE