



**OFFICE**  
SPACE AVAILABLE  
13,635 RSF

# NORTHWINDS VI

11675 Rainwater Drive // Suite 350 // Alpharetta, GA 30009



404.252.1200 // [www.skcr.com](http://www.skcr.com)

900 Circle 75 Parkway #720, Atlanta, GA 30339

## AVAILABLE SPACES:

### 11675 RAINWATER DRIVE

**SUITE 350:** 13,635 RSF

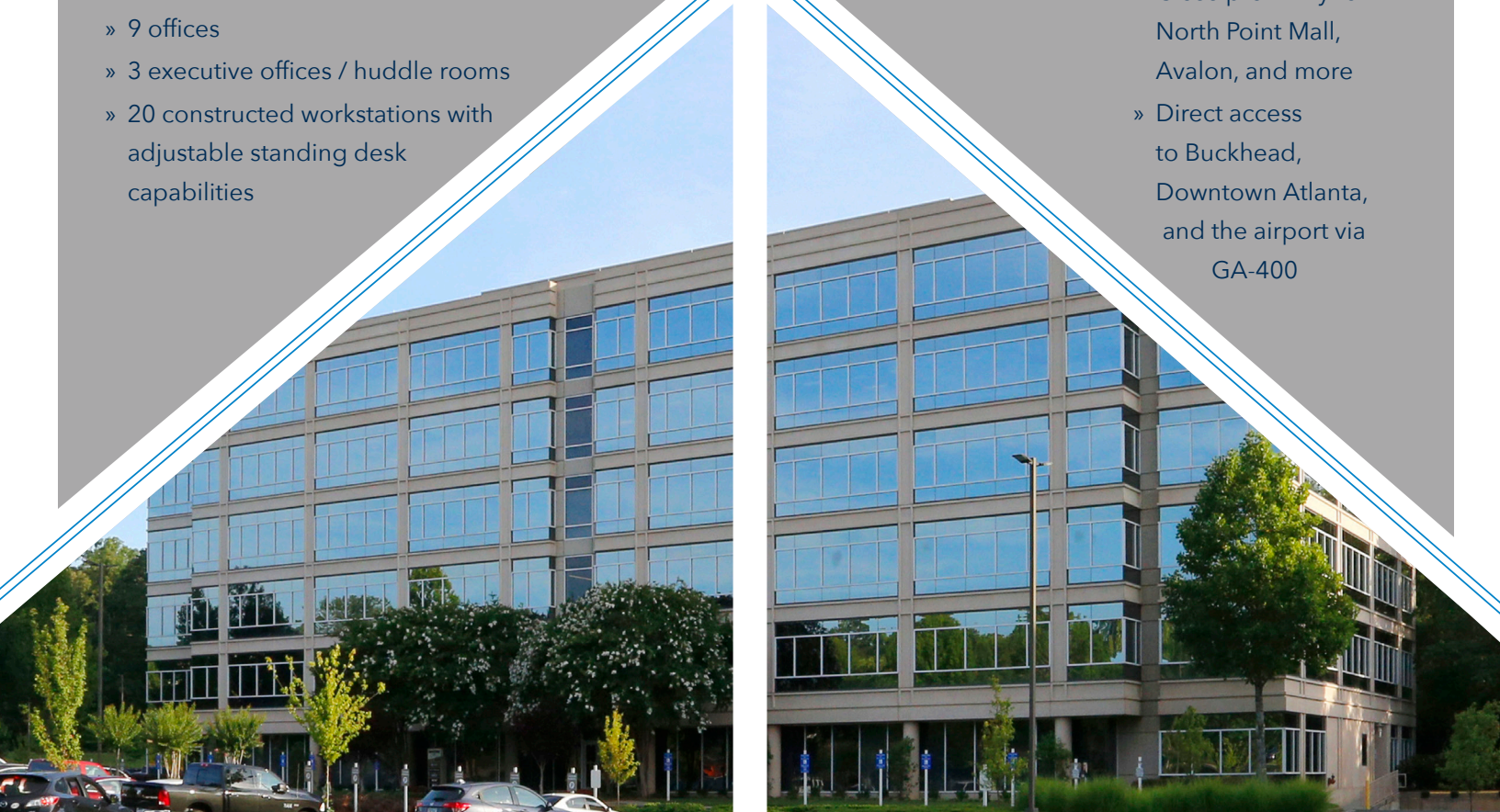
- » Plug and play suites
- » Term through June 30, 2030

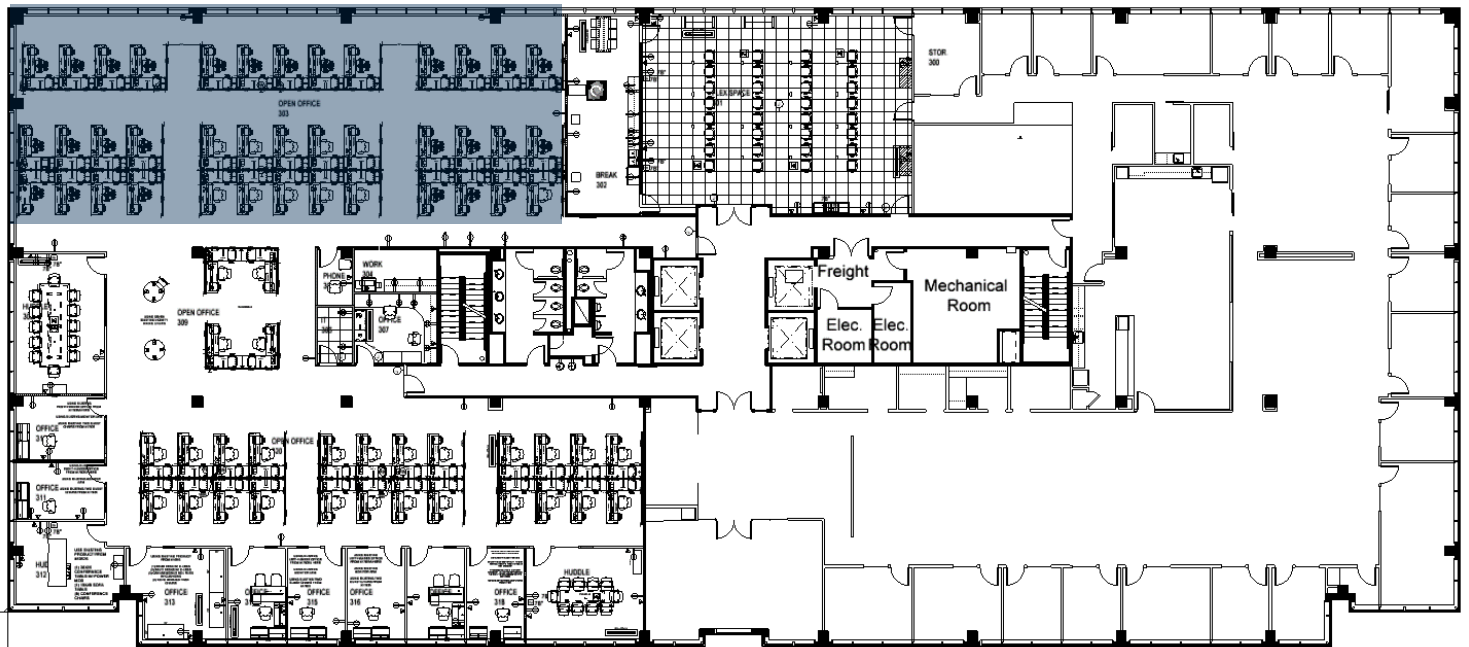
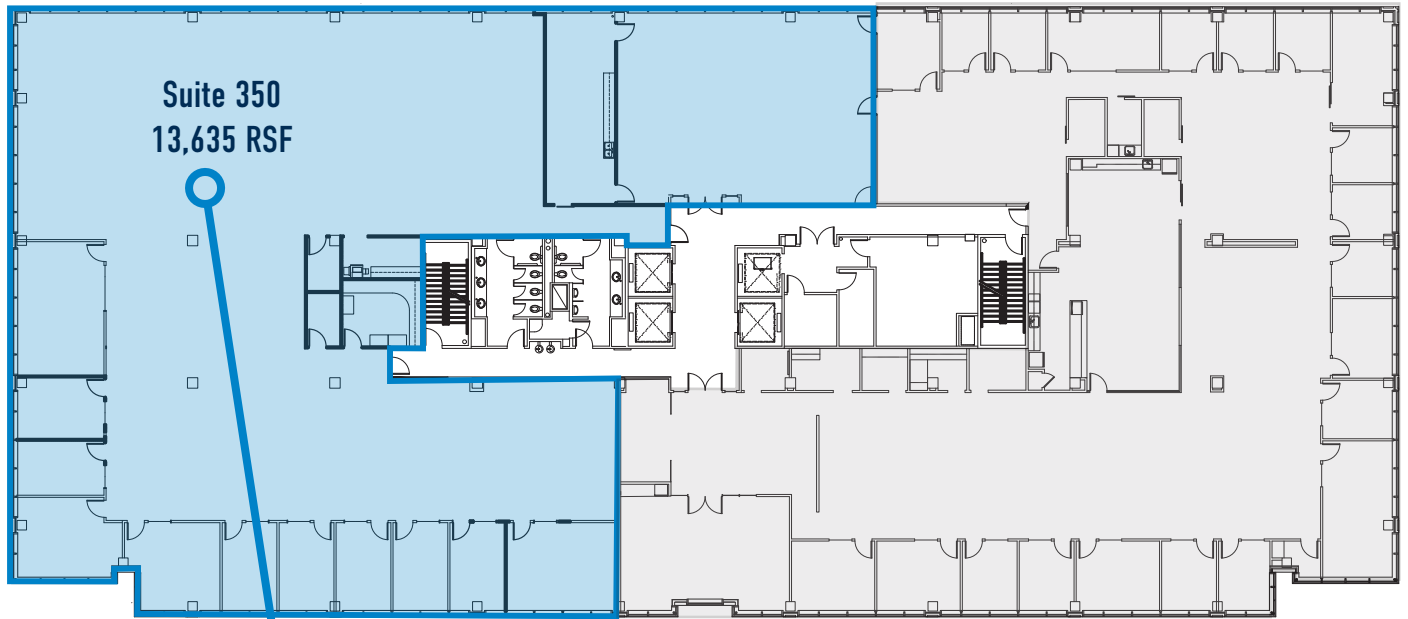
#### AVAILABILITY:

- » 100-person-capacity training room with wireless audio / visual and teleconferencing capabilities
- » Attached high-end breakroom with stainless steel appliances and shuffleboard table
- » Open workspace with room for 40 - 50 workstations, equipped with floor cores and furniture whips
- » 12-person conference room with wireless audio / visual and teleconferencing capabilities
- » 9 offices
- » 3 executive offices / huddle rooms
- » 20 constructed workstations with adjustable standing desk capabilities


#### AMENITIES:

- » Class A workspace
- » On-site management
- » Two complimentary fitness centers
- » Shared conference center
- » Landscaped picnic areas
- » EV charging stations
- » Walk to dining, banking, and services
- » Mixed-use development
- » Two hotels
- » Daycare / learning facility
- » Close proximity to North Point Mall, Avalon, and more
- » Direct access to Buckhead, Downtown Atlanta, and the airport via GA-400





**Furniture Plan**

 = Area currently open, but this layout could be supported.





## CONTACT:

**Warner Ray**  
770.771.5538 // [jwray@skcr.com](mailto:jwray@skcr.com)

**John Poulos**  
404.456.7891 // [jpoulos@skcr.com](mailto:jpoulos@skcr.com)