



Retail Space for Lease

Restored Cast Iron Store Front

94 READE  
STREET

North Side | Second Store West of Church Street

CAST IRON ARCHITECTURE  
EXPOSED BRICK INTERIOR  
SELLING COMMERCIAL LOWER LEVEL

Ground – 1,452 SF

Lower Level – 972 SF

Sub Basement – 1,370 SF

Frontage – 25-feet

Ceiling Heights

13'-15' Ground

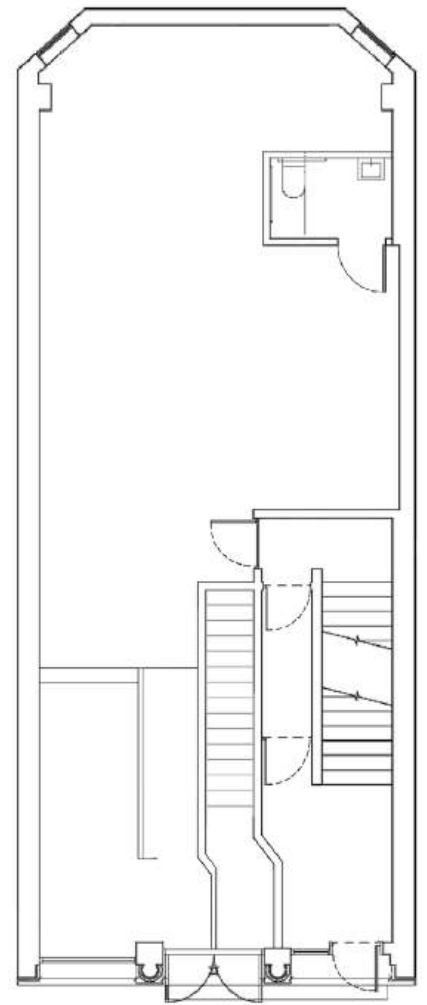
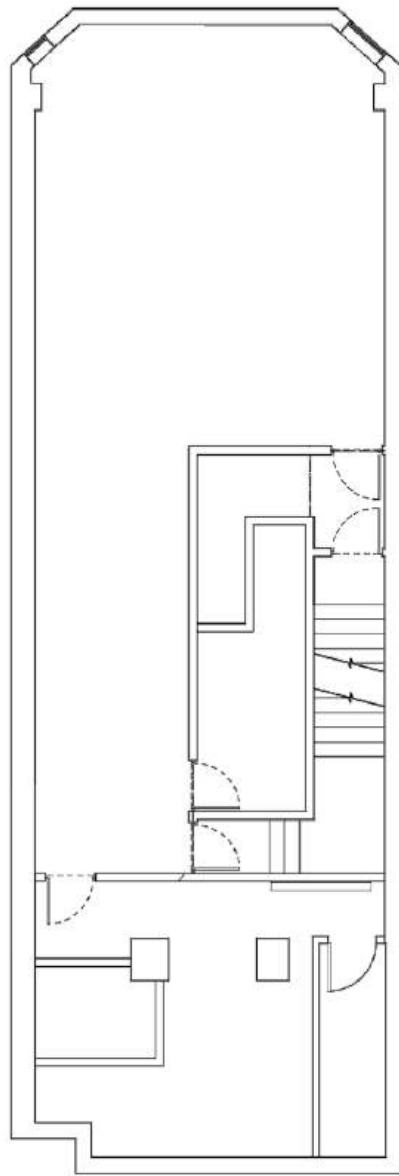
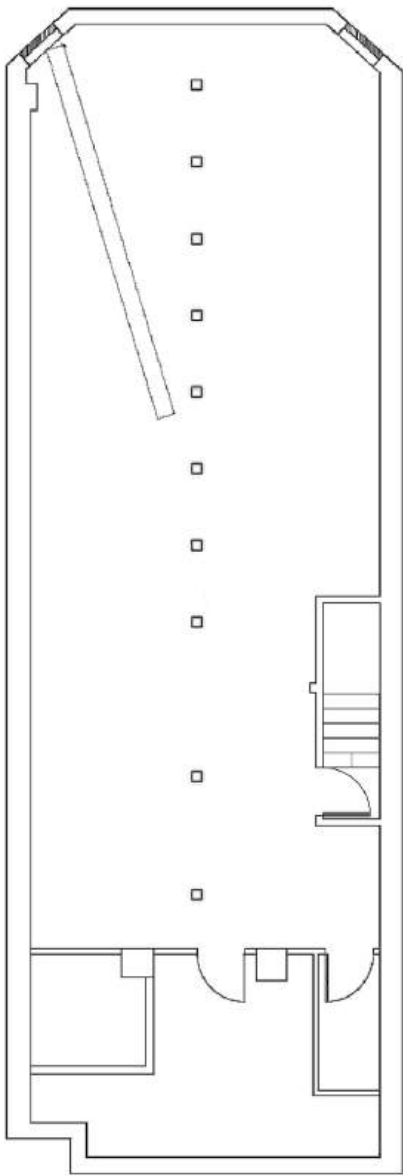
11' Lower Level

8' – Sub Basement

Term – Negotiable

Comments

- New Storefront with ADA entrance
- Legal Selling Lower Level
- Delivery of Turn-key Retail
- Showroom / Retail / Medical /  
Light Fitness / Professional Office
- Sub-Basement Storage



# 94 READE STREET

Please Contact:  
Peter Weisman  
212.300.3077  
[peter@weismannyc.com](mailto:peter@weismannyc.com)