

FOR LEASE

Marjorie Building Lakewood, Ohio

1,800 sf available



Description: 15100 - 15118 Detroit Avenue. The Plaza sits on the NW corner of Detroit and Gladys, across from Starbucks and Huntington Bank. The building is roughly 7,300 sq ft on the retail floor with apartments above and sits less than 1/10 of a mile from Detroit and Warren.

Co-Tenants: Inline with The Exchange, Root Café, Lion and Blue, etc.

Nearby Tenants: Marc's, Pet Supplies Plus, Discount Drug Mart, Dollar General, AT&T, Chipotle, Dave's Hot Chicken, Panera Bread, Potbelly, Charley's, Beyond Juicery, etc.

Demographics:

Population:

1 mile: 25,746

3 miles: 113,510

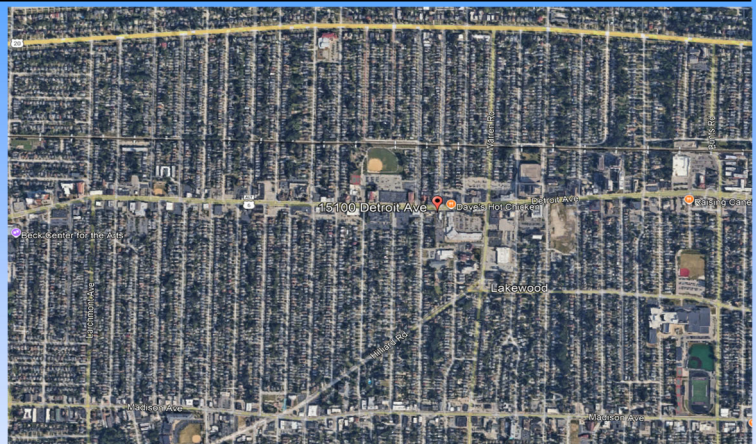
5 miles: 214,468

Average Household Income:

1 mile: \$91,069

3 miles: \$77,735

5 miles: \$75,603



For more information contact:
Craig Cohen
Craig@CohenCommercialGroup.com



Cohen Commercial Group
3690 Orange Place, Suite 111
Beachwood, Ohio 44122
(216) 223-5060

The information submitted herein is not guaranteed. Although obtained from reliable sources, it is subject to errors, omissions, prior sale/lease and withdrawal from the market without notice. Cohen Commercial Group, its affiliates, agents, and employees, and Seller/Landlord make no representations about the accuracy of said information and recommend individual investigation to certify its validity.