

CHURCHILL TOWER

12400 COIT ROAD | DALLAS, TEXAS 75251



INCREDIBLE LOCATION | FIRST IN CLASS AMENITIES



CONTACT

Kolby Dickerson
214-534-1599
kdickerson@txreproperties.com

Sam Davis
214-684-7197
sdavis@txreproperties.com

Grant Gomez
214-734-4725
grant@txreproperties.com

PROPERTY HIGHLIGHTS

- Fully Staffed Building with Onsite Property Management, Engineering, Security, and Janitorial
- Newly Renovated
 - State of the Art Conference Facility (60 Seats)
 - Fitness Center with Men's & Women's Full Service Locker Rooms
- Paesano's Cafe Under Construction - Opening Spring 2026
- On-Site Car Detail Center
- 5 Story Parking Garage with 4:1,000 Parking Ratio
- 2-Level Underground Secured Executive Garage

WWW.12400COIT.COM



PROPERTY LOCATION

- Exceptional Ingress & Egress
 - Direct Exit from 75 at Churchill & Coit
 - Direct Exit from 635 at Coit
- 18 Minutes to DFW International Airport
- 14 Minute to Dallas Love Field Airport
- 12 Minutes to Dallas Central Business District
- 1 Mile to Medical City Dallas
- 2.3 Miles to NorthPark Center
- 2 Miles to Galleria Center
- DART Bus Service with Connects to Forest Lane Light Rail Station

Renovated Fitness Center



New Paesano's Coming 2026



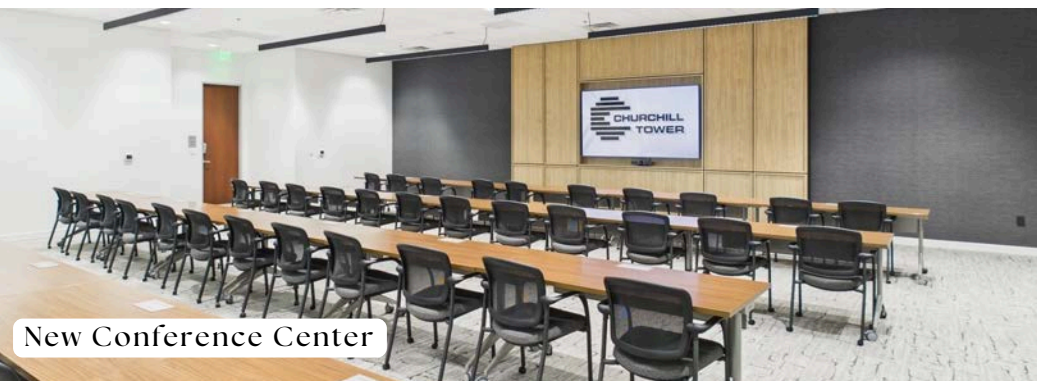
Onsite Car Detail Station



New Lobby Renovations

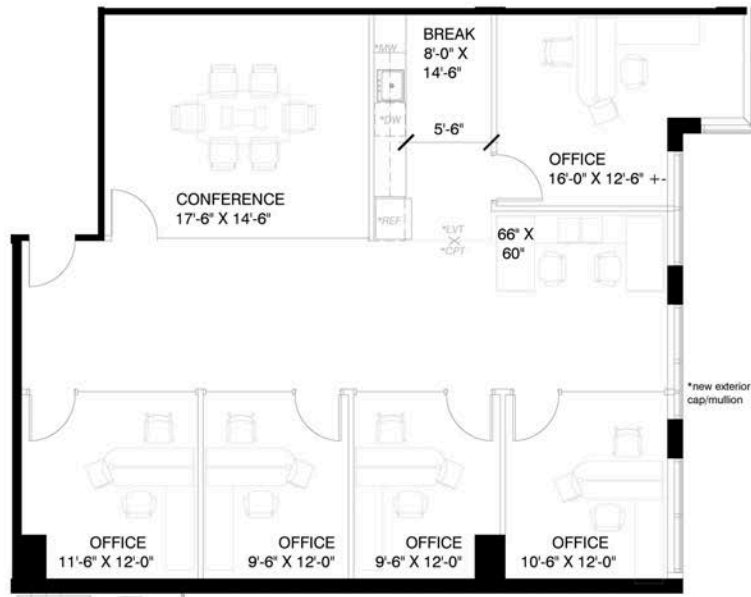


New Conference Center



AVAILABLE SUITES

**SUITE 350 -
3,589 RSF**



**SUITE 140 -
1,873 RSF**



TOUR SUITE 1150



SUITE 1150 - 2,485 RSF



CHURCHILL TOWER

12400 COIT ROAD | DALLAS, TEXAS 75251

CONTACT

Kolby Dickerson
214-534-1599
kdickerson@txreproperties.com

Sam Davis
214-684-7197
sdavis@txreproperties.com

Grant Gomez
214-734-4725
grant@txreproperties.com

