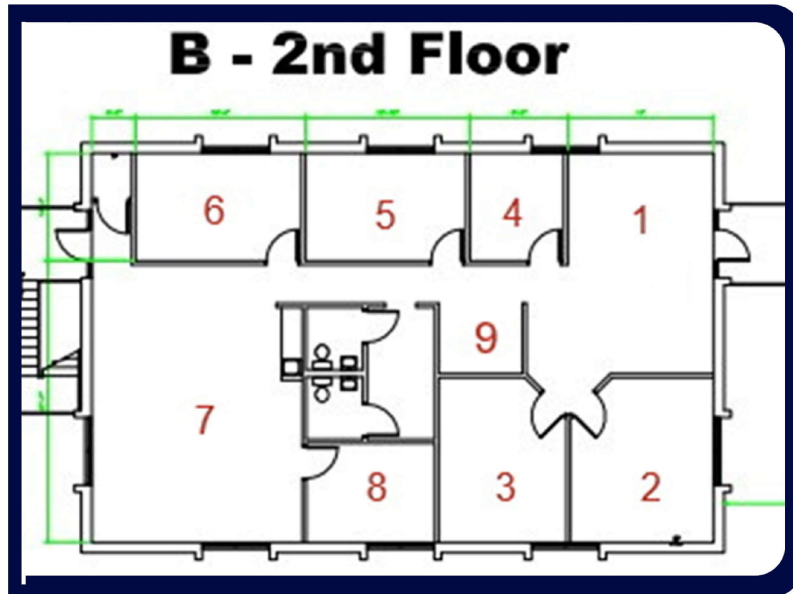


OFFICE SPACE FOR LEASE

1120 SOUTH POINTE PROPERTIES



B - 2ND FLOOR

This suite is approximately 2,232 sqft. Access is from a stairway at a side parking lot, or from the courtyard stairway and elevator. Most offices are large and can optionally accommodate multiple people if desired. It has private restroom and kitchenette.

BLD A AREA	APPROXIMATE SIZE	NARRATIVE
1	14' x 21'2	Reception and primary entrance
2	15'11 x 13'9	Large office
3	15'11 x 12'2	Large office
4	9'7 x 10'3	Small office
5	15'5 x 10'3	Office
6	15'6 x 10'3	Office
7	26'9 x 20'7	Bay area with kitchenette
8	12'4 x 9'8	Office



1120 SOUTH POINTE PROPERTIES, LLC

1120 S Pointe Parkway
Shreveport, LA 71105

Greg.teeters@outlook.com
318-573-3892