

Retail & Office Space for Lease

49 Wyckoff Avenue

Bushwick, Brooklyn, NY

Location:

Wyckoff Avenue Block-Through from Starr Street to Willoughby Avenue

Ground Floor:

1,000 – 8,400 SF

2nd Level:

1,000 – 11,507 RSF

4th Level:

Suite #401: 1,266 RSF

Suite #402: 2,774 RSF


Suite #408: 1,220 RSF

Suite #409: 437 RSF

Rooftop:

8,400 SF

Highlights:

- Located at the busiest corner intersection in Bushwick
-  train is located directly in-front at Jefferson St station with 2,563,505 annual ridership
- Robust pedestrian activity and foot traffic along Wyckoff Avenue
- Bushwick has many prominent retail shops, restaurants and bars, offices and residential exposure
- All uses are considered

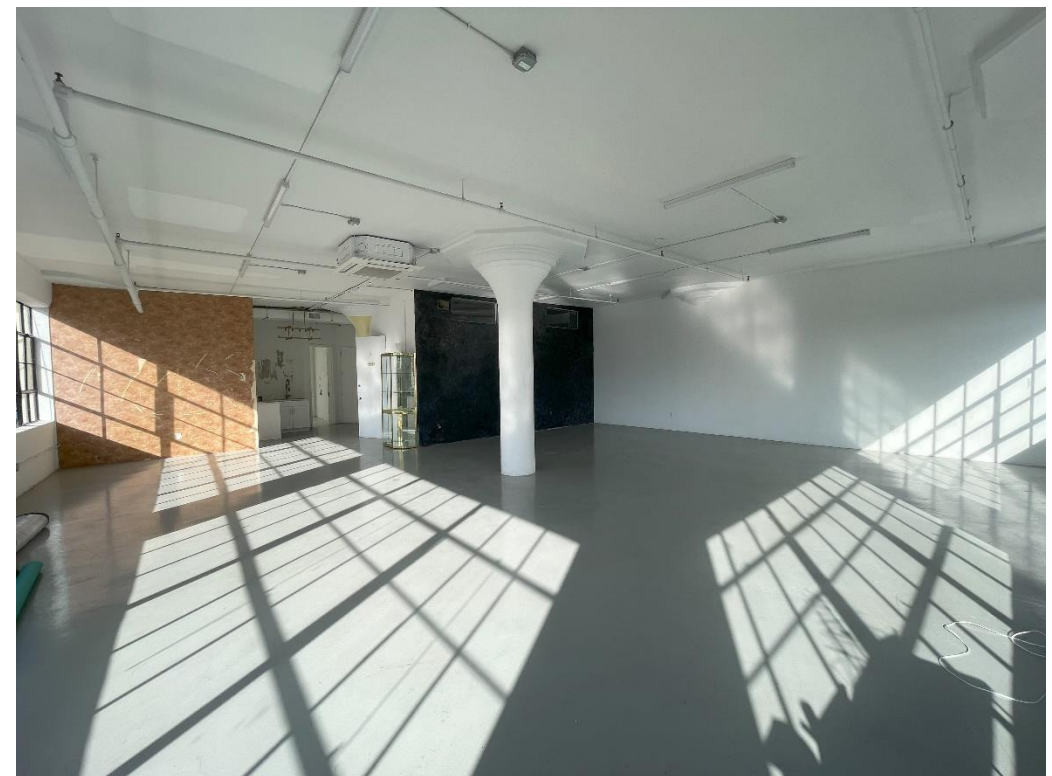


NEIGHBORING TENANTS:

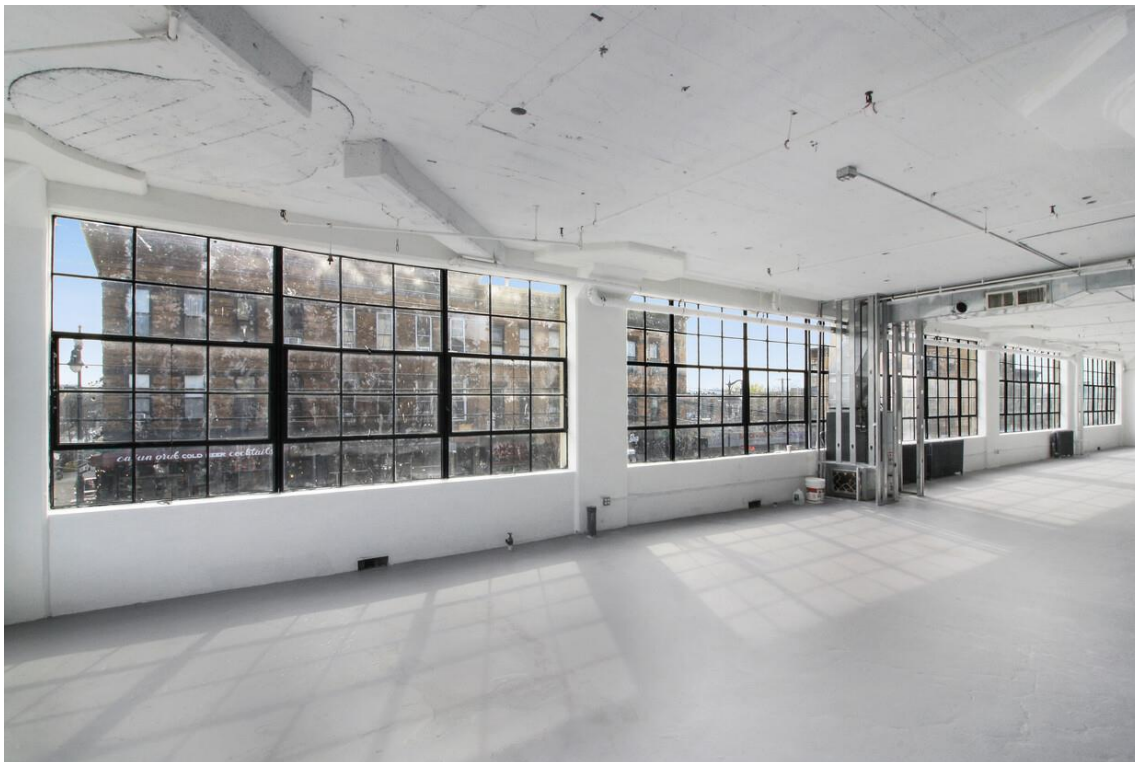


Call/Text:
516 350 2621

Suites Photos:



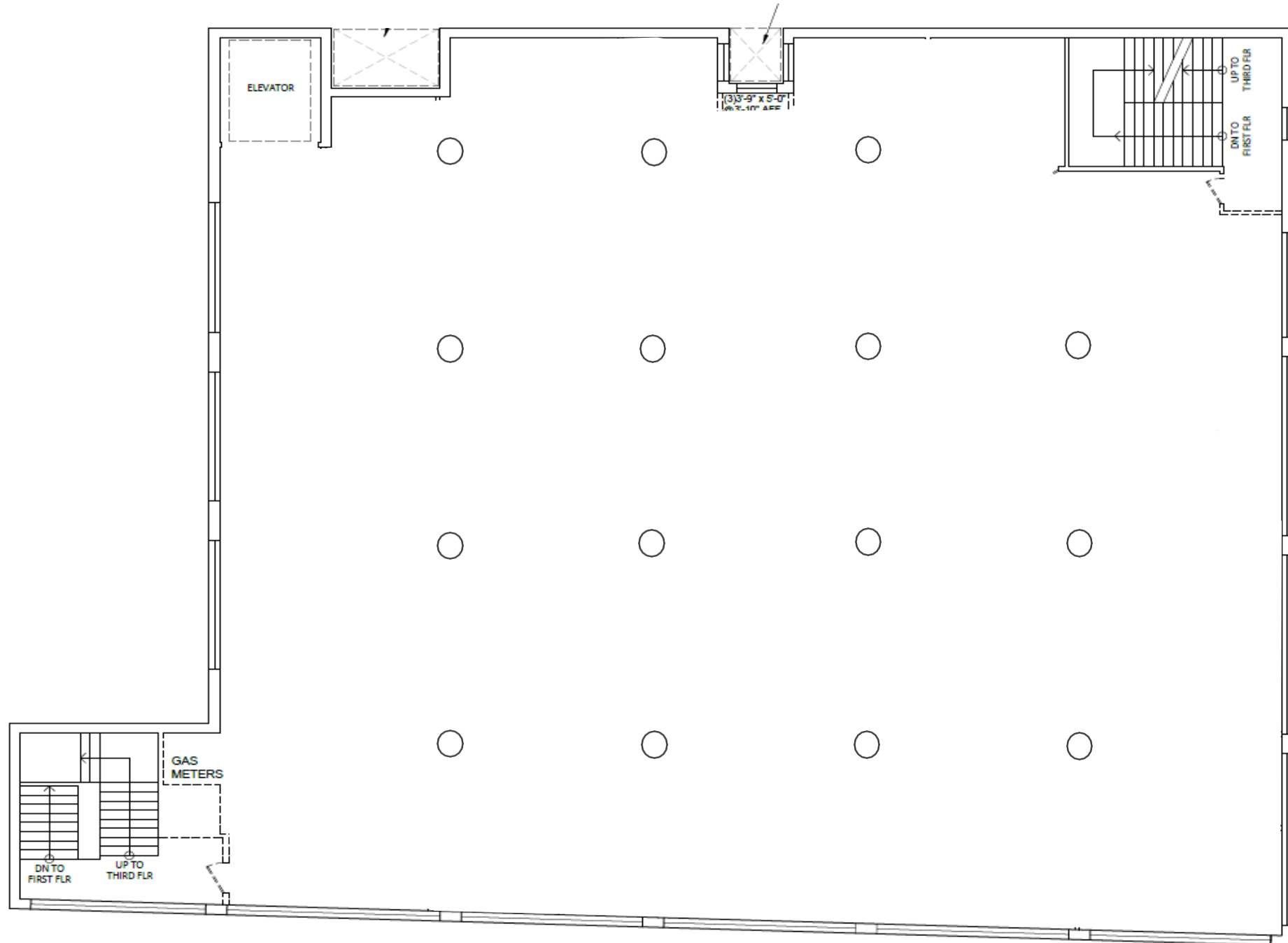
Full Floor Photos:



Ground Floor

8,400 SF

**Divisible
1,000 SF +**



Willoughby Avenue

Wyckoff Avenue

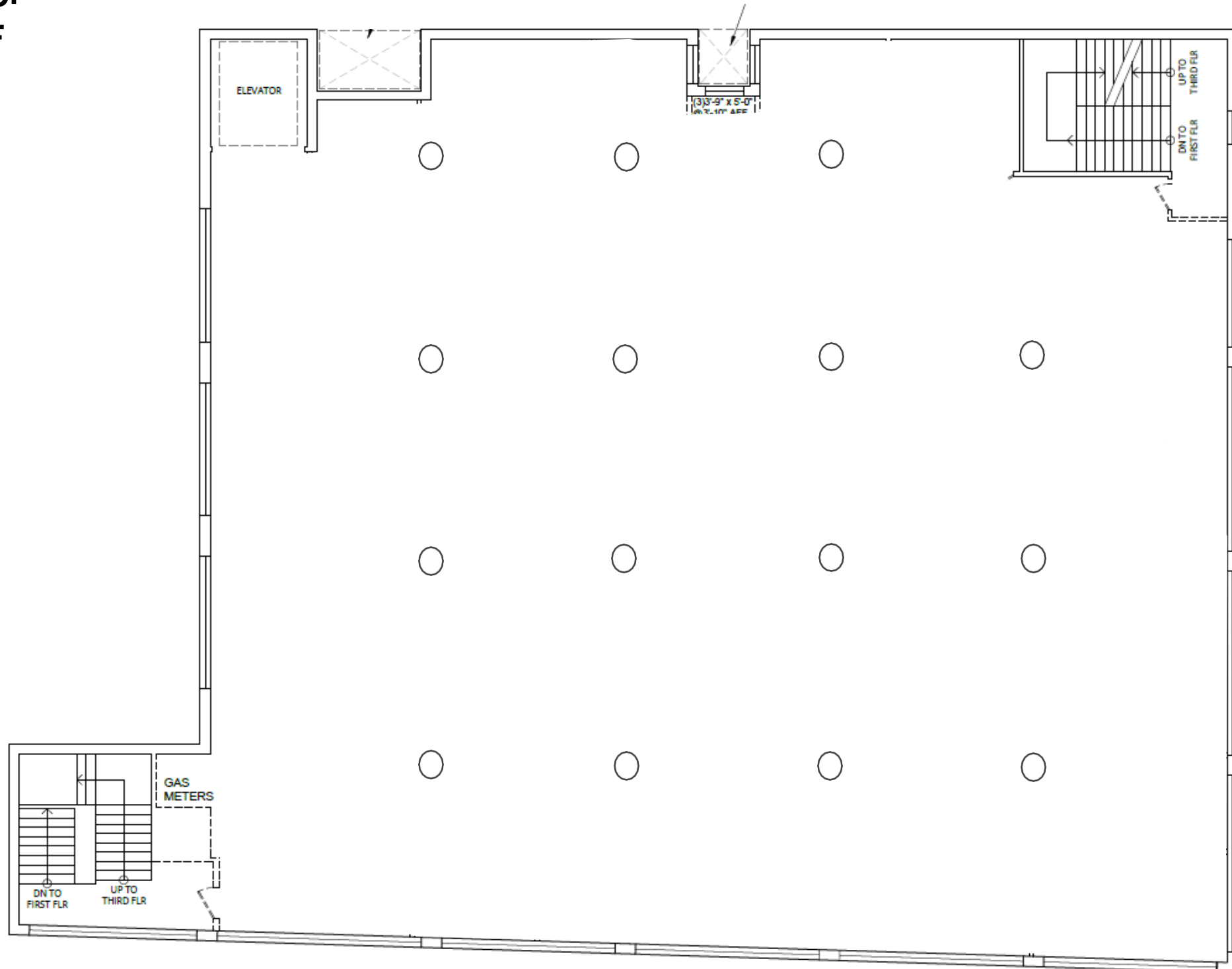
Ground Floor Suggested Divisions



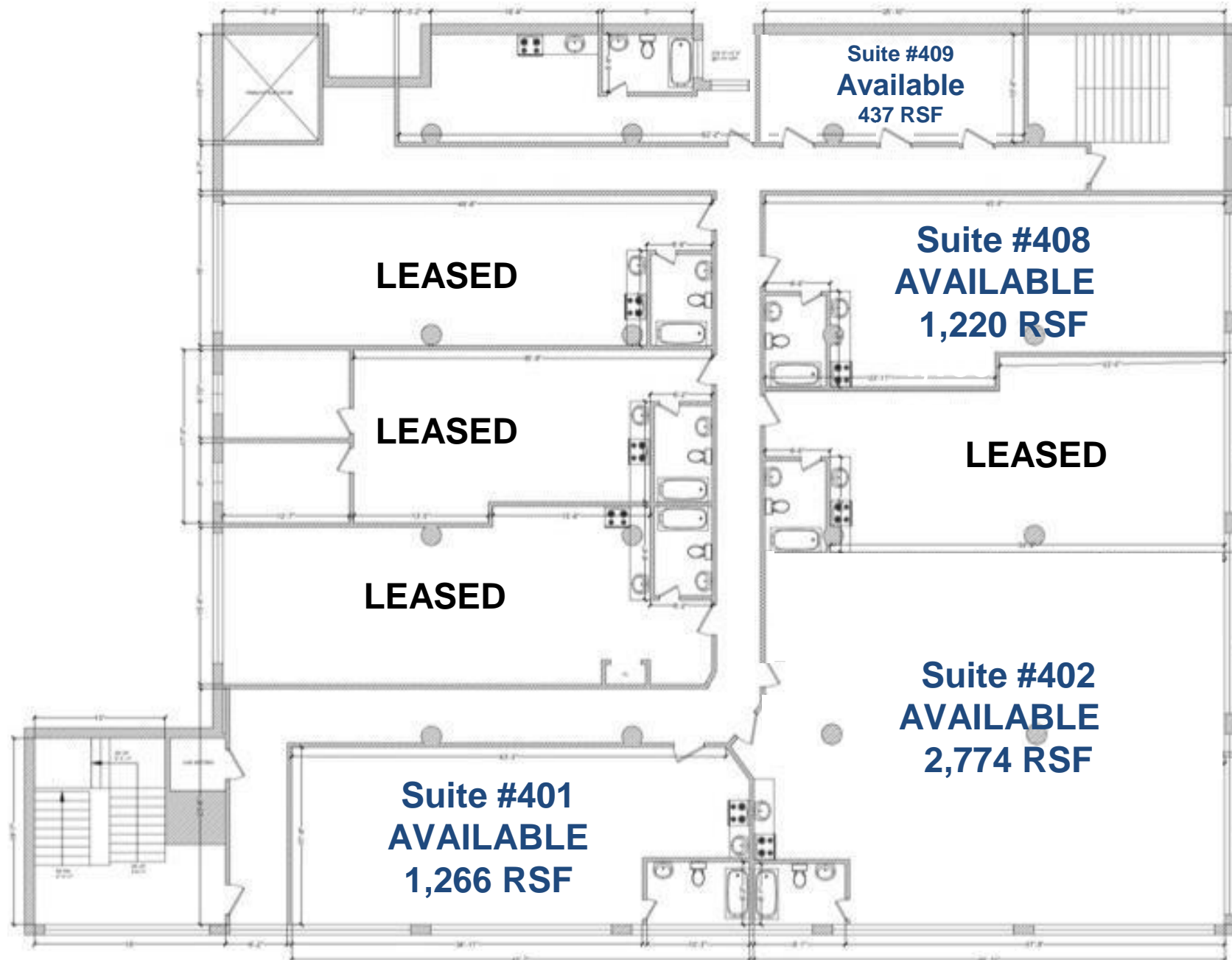
Second Floor

11,507 RSF

**Divisible
1,000 SF +**

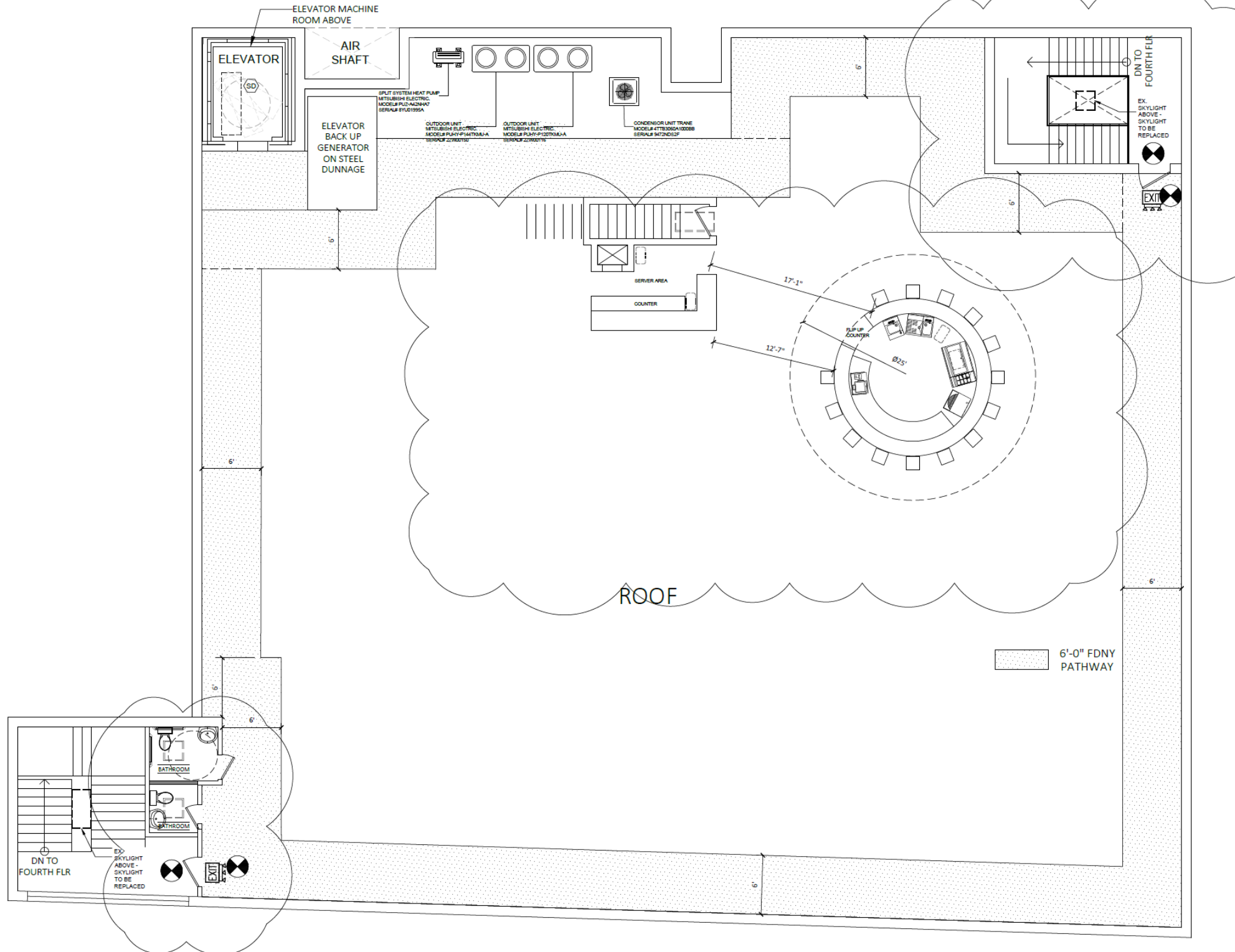


Fourth Floor Floor Plan



**Rooftop
8,400 SF**

Bushwick, Brooklyn, NY



RETAIL MAP



Annual Subway Ridership

L train is steps away at **Jefferson Street** station with 2,515,861 annual ridership

CONTACT

JOSH SLOAN

516-350-2621

JS@SLOAN-RE.COM