

Voyager Building Available for Lease

500 Marschall Rd, Shakopee MN 55379



Ryan Krzmarzick, CCIM SIOR
Executive Vice President
+1 952 897 7746
ryan.k@colliers.com

Ansel Cook
Associate
+1 952 897 7894
ansel.cook@colliers.com

1600 Utica Ave S Ste 300
Minneapolis, MN 55416
+1 952 897 7700
colliers.com



Building Specifications

Class A Space Amenities

- 27,766 square foot office/medical/retail building
- Masonry construction
- Class 'A' office building
- 119 parking spaces available
- Great access to Hwys 101 & 169

Building Size

27,766 SF

Available

Floor 2 | Suite 220: 4,945 SF (Divisible to 2,000 SF)

Floor 1 | Suite 140: 821 SF

Net Rental Rates

\$15.00–\$17.50 per square foot

Est 2025 CAM/Tax

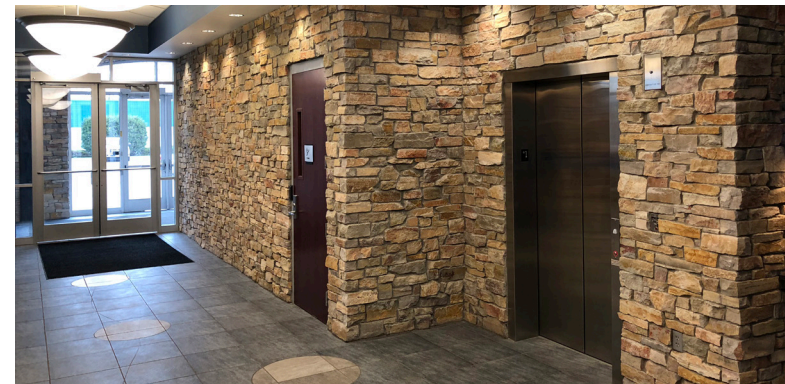
\$9.62 per square foot

Traffic Counts

Marschall Rd: 12,700 vpd

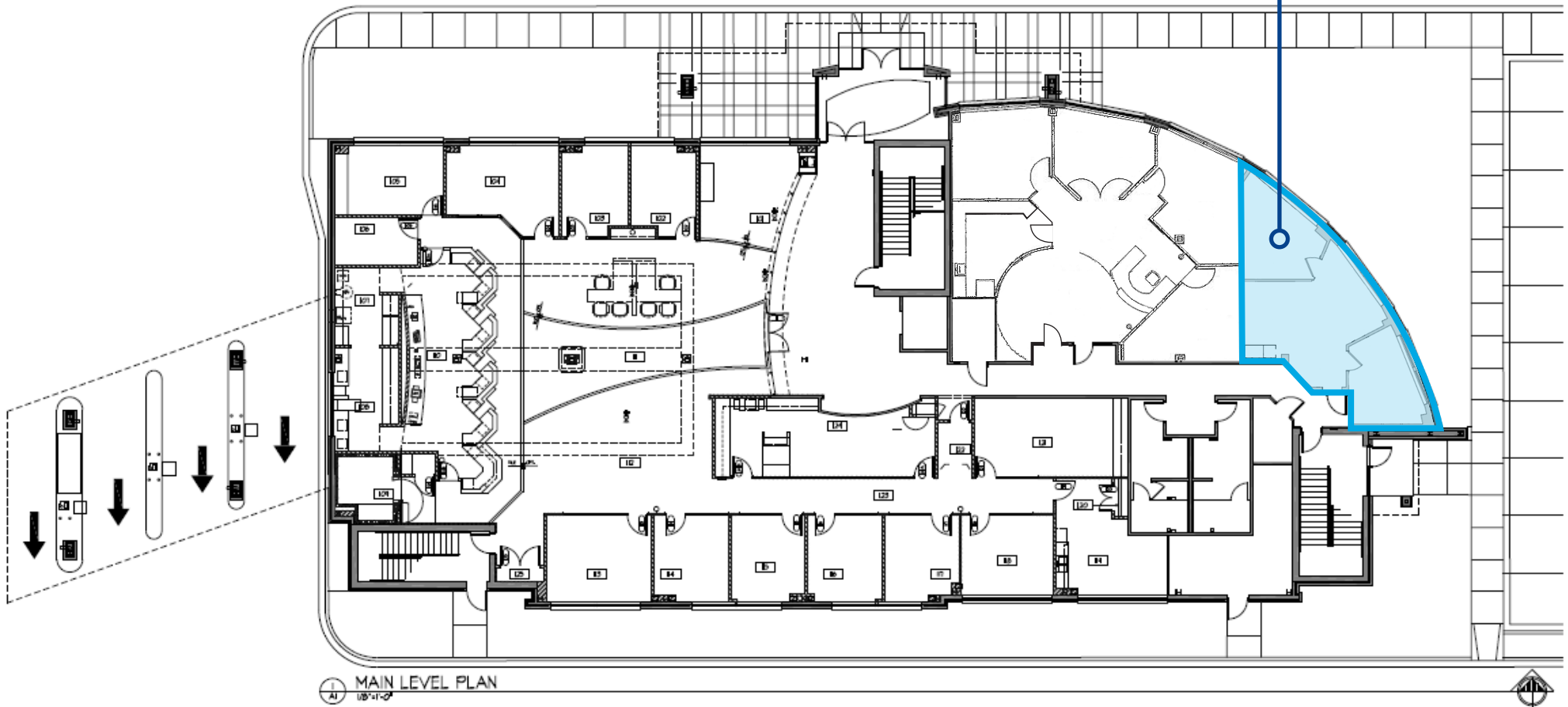
Eagle Creek Blvd: 7,300 vpd

CR 101: 19,000 vpd

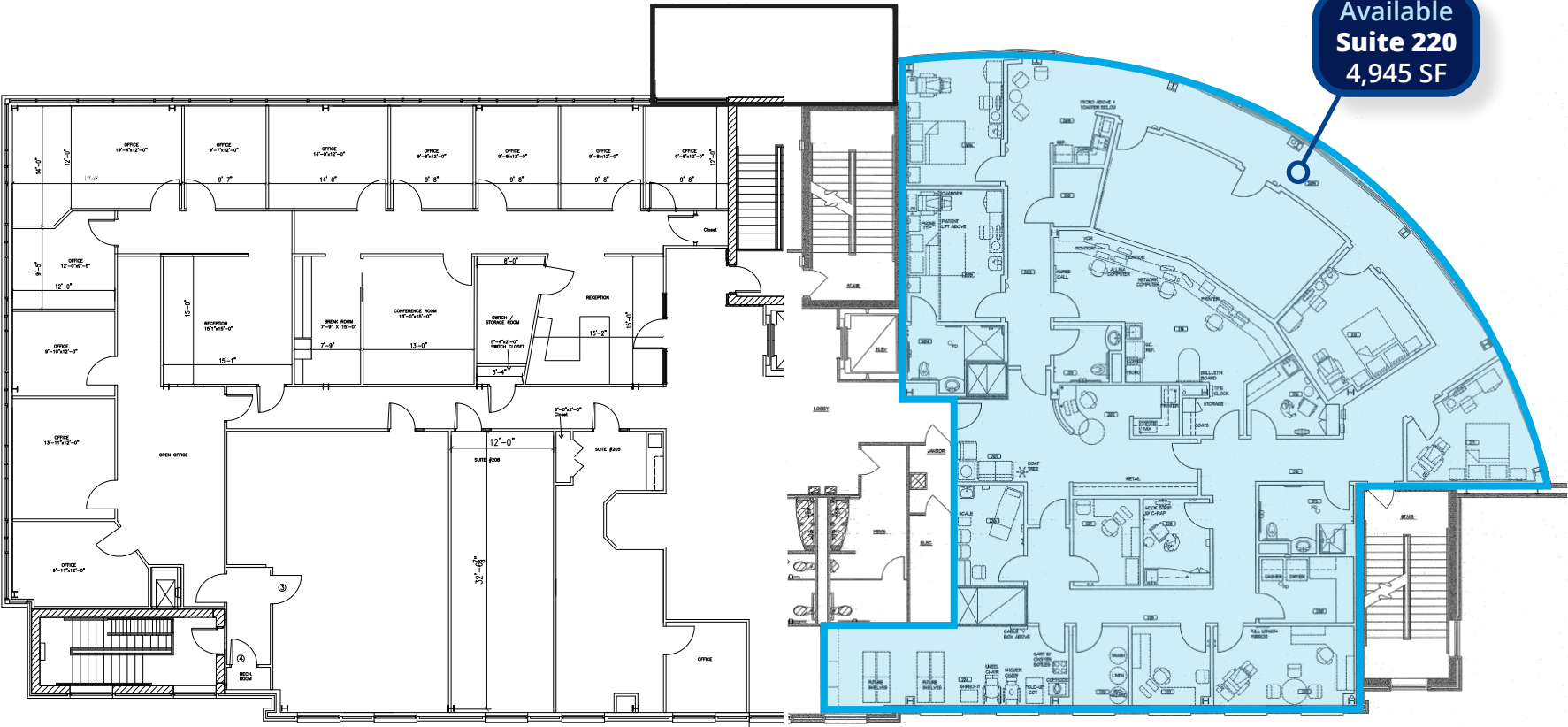


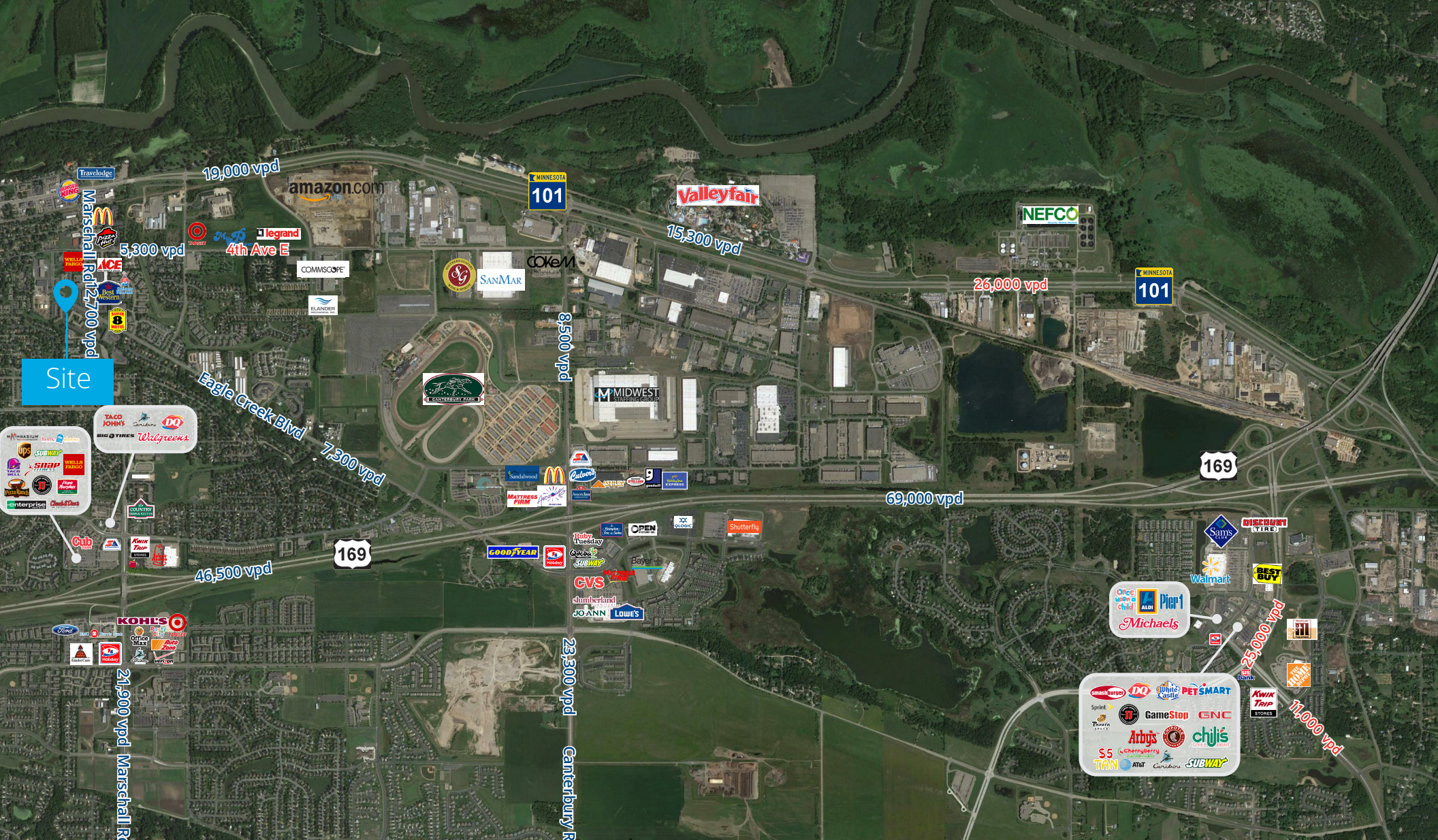
Floor Plan | 1st Floor

Available
Suite 140
821 SF



Floor Plan | 2nd Floor





Ryan Krzmarzick, CCIM SIOR

Executive Vice President
+1 952 897 7746
ryan.k@colliers.com

Ansel Cook

Associate
+1 952 897 7894
ansel.cook@colliers.com

This document has been prepared by Colliers International for advertising and general information only. Colliers International makes no guarantees, representations or warranties of any kind, expressed or implied, regarding the information including, but not limited to, warranties of content, accuracy and reliability. Any interested party should undertake their own inquiries as to the accuracy of the information. Colliers International excludes unequivocally all inferred or implied terms, conditions and warranties arising out of this document and excludes all liability for loss and damages arising there from. This publication is the copyrighted property of Colliers International and/or its licensor(s). ©2025 All rights reserved.

Colliers