

FOR LEASE

 BALTIMORE COUNTY, MD

3200 LORD BALTIMORE DRIVE

EXECUTIVE PARK WEST | 3200 LORD BALTIMORE DRIVE | WINDSOR MILL, MD 21244

FULL BUILDING AVAILABLE FOR LEASE — FULLY FURNISHED PLUG & PLAY



PROPERTY HIGHLIGHTS:

- ▶ PROFESSIONAL, GATED OFFICE PARK IN 30 ACRE WALKABLE CAMPUS
- ▶ STATE OF THE ART BUILD-OUT INCLUDING 13 CONFERENCE ROOMS WITH RESERVATION SYSTEM
- ▶ AMENITIES WITHIN THE SPACE INCLUDE A WELLNESS ROOM, ADJUSTABLE SIT/STAND DESKS, AND TREADMILL DESKS
- ▶ AMENITIES WITHIN THE PARK INCLUDE A FITNESS CENTER AND CONFERENCE ROOM
- ▶ ON-SITE DAYCARE AND RESTAURANT
- ▶ MTA BUS STOP #37 ON-SITE

 **DAVID S. BROWN**
ENTERPRISES, LTD.

KEVIN KEANE | SVP, OFFICE LEASING
📞 410.581.2519 ✉️ KEVIN@DAVIDSBROWN.COM

BRENT MANGUM | VP, OFFICE LEASING
📞 410.581.2518 ✉️ BRENT@DAVIDSBROWN.COM

NOAH ADLER | LEASING ASSOCIATE
📞 410.581.2510 ✉️ NADLER@DAVIDSBROWN.COM

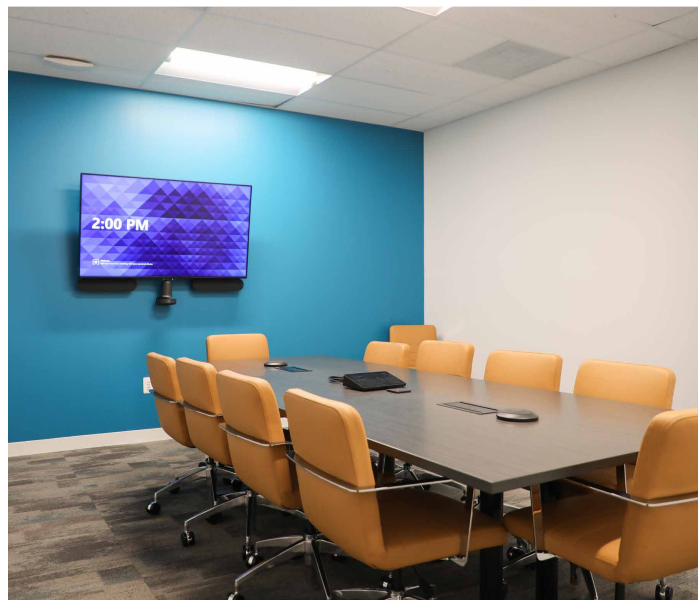
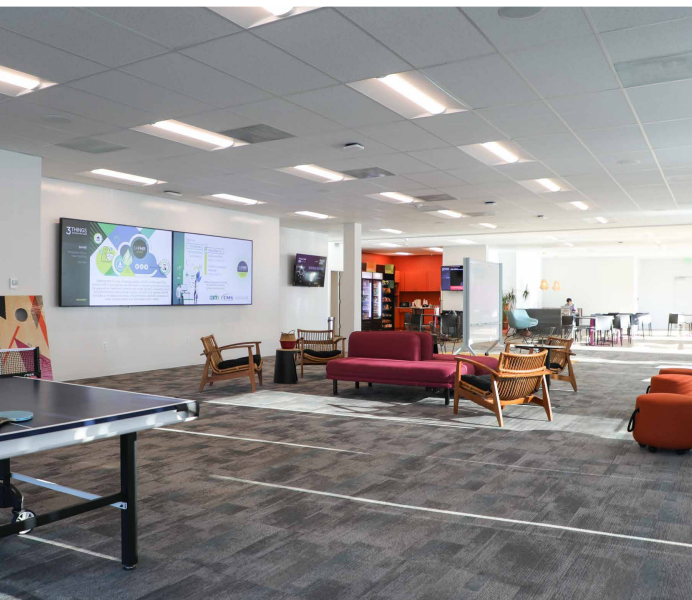
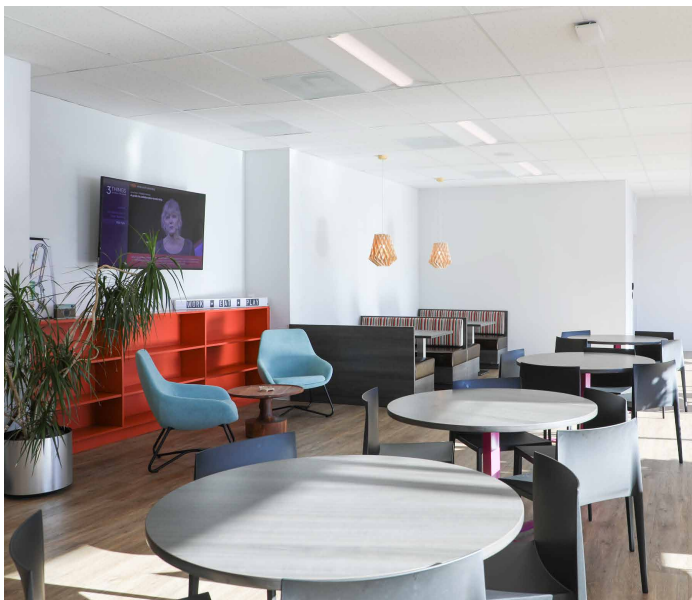
DAVID S. BROWN ENTERPRISES | 100 PAINTERS MILL ROAD, OWINGS MILLS, MD 21117 | 410.581.2520 | WWW.DAVIDSBROWN.COM | 

FOR LEASE

 BALTIMORE COUNTY, MD

3200 LORD BALTIMORE DRIVE

EXECUTIVE PARK WEST | 3200 LORD BALTIMORE DRIVE | WINDSOR MILL, MD 21244



 **DAVID S. BROWN**
ENTERPRISES, LTD.

KEVIN KEANE | SVP, OFFICE LEASING
📞 410.581.2519 ✉️ KEVIN@DAVIDSBROWN.COM

BRENT MANGUM | VP, OFFICE LEASING
📞 410.581.2518 ✉️ BRENT@DAVIDSBROWN.COM

NOAH ADLER | LEASING ASSOCIATE
📞 410.581.2510 ✉️ NADLER@DAVIDSBROWN.COM

DAVID S. BROWN ENTERPRISES | 100 PAINTERS MILL ROAD, OWINGS MILLS, MD 21117 | 410.581.2520 | WWW.DAVIDSBROWN.COM |    

FOR LEASE

B BALTIMORE COUNTY, MD

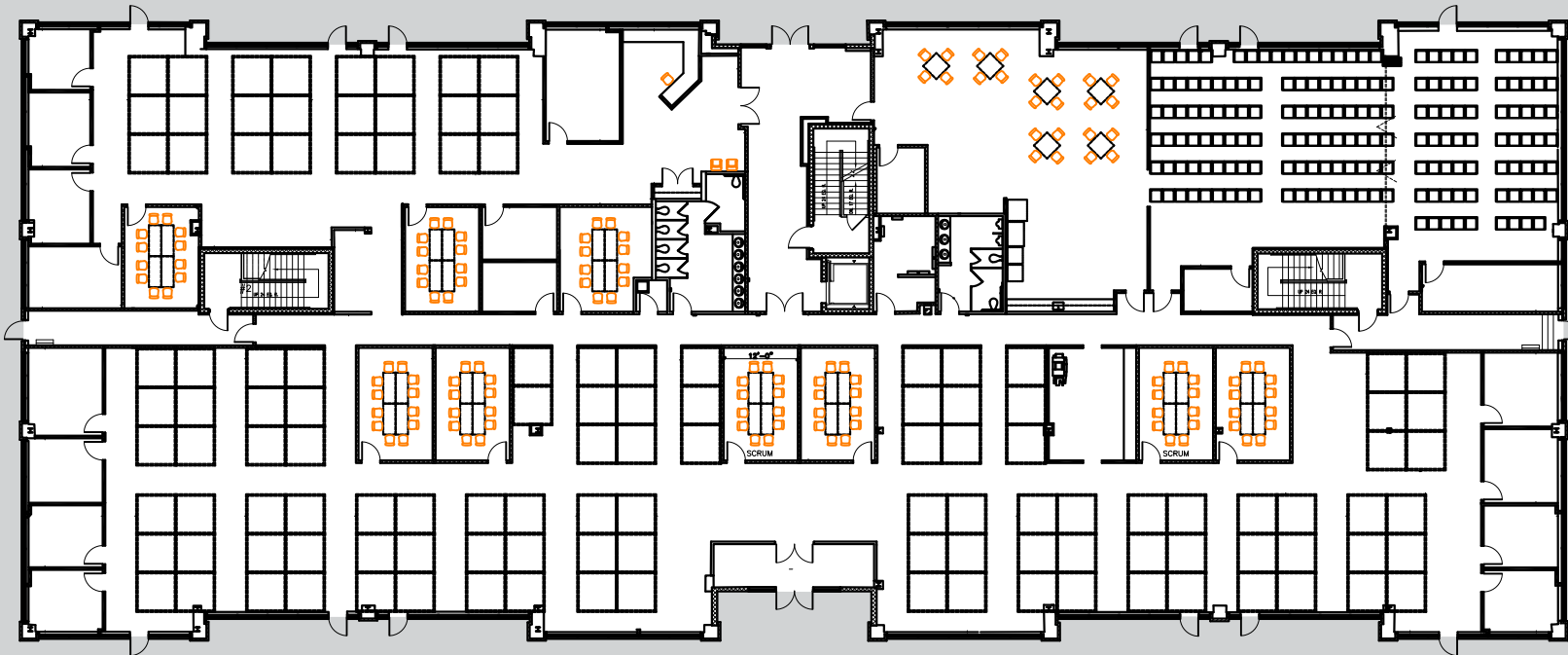
3200 LORD BALTIMORE DRIVE

EXECUTIVE PARK WEST | 3200 LORD BALTIMORE DRIVE | WINDSOR MILL, MD 21244

SUITE 100 VIRTUAL TOUR ►

AVAILABLE

► SUITE 100 - 22,737 SF



DAVID S. BROWN
ENTERPRISES, LTD.

KEVIN KEANE | SVP, OFFICE LEASING
410.581.2519 | KEVIN@DAVIDSBROWN.COM

BRENT MANGUM | VP, OFFICE LEASING
410.581.2518 | BRENT@DAVIDSBROWN.COM

NOAH ADLER | LEASING ASSOCIATE
410.581.2510 | NADLER@DAVIDSBROWN.COM

DAVID S. BROWN ENTERPRISES | 100 PAINTERS MILL ROAD, OWINGS MILLS, MD 21117 | 410.581.2520 | WWW.DAVIDSBROWN.COM |    

FOR LEASE

B BALTIMORE COUNTY, MD

3200 LORD BALTIMORE DRIVE

EXECUTIVE PARK WEST | 3200 LORD BALTIMORE DRIVE | WINDSOR MILL, MD 21244

AVAILABLE

► SUITE 200 - 23,544 SF

SUITE 200 VIRTUAL TOUR ►



DAVID S. BROWN
ENTERPRISES, LTD.

KEVIN KEANE | SVP, OFFICE LEASING
410.581.2519 | KEVIN@DAVIDSBROWN.COM

BRENT MANGUM | VP, OFFICE LEASING
410.581.2518 | BRENT@DAVIDSBROWN.COM

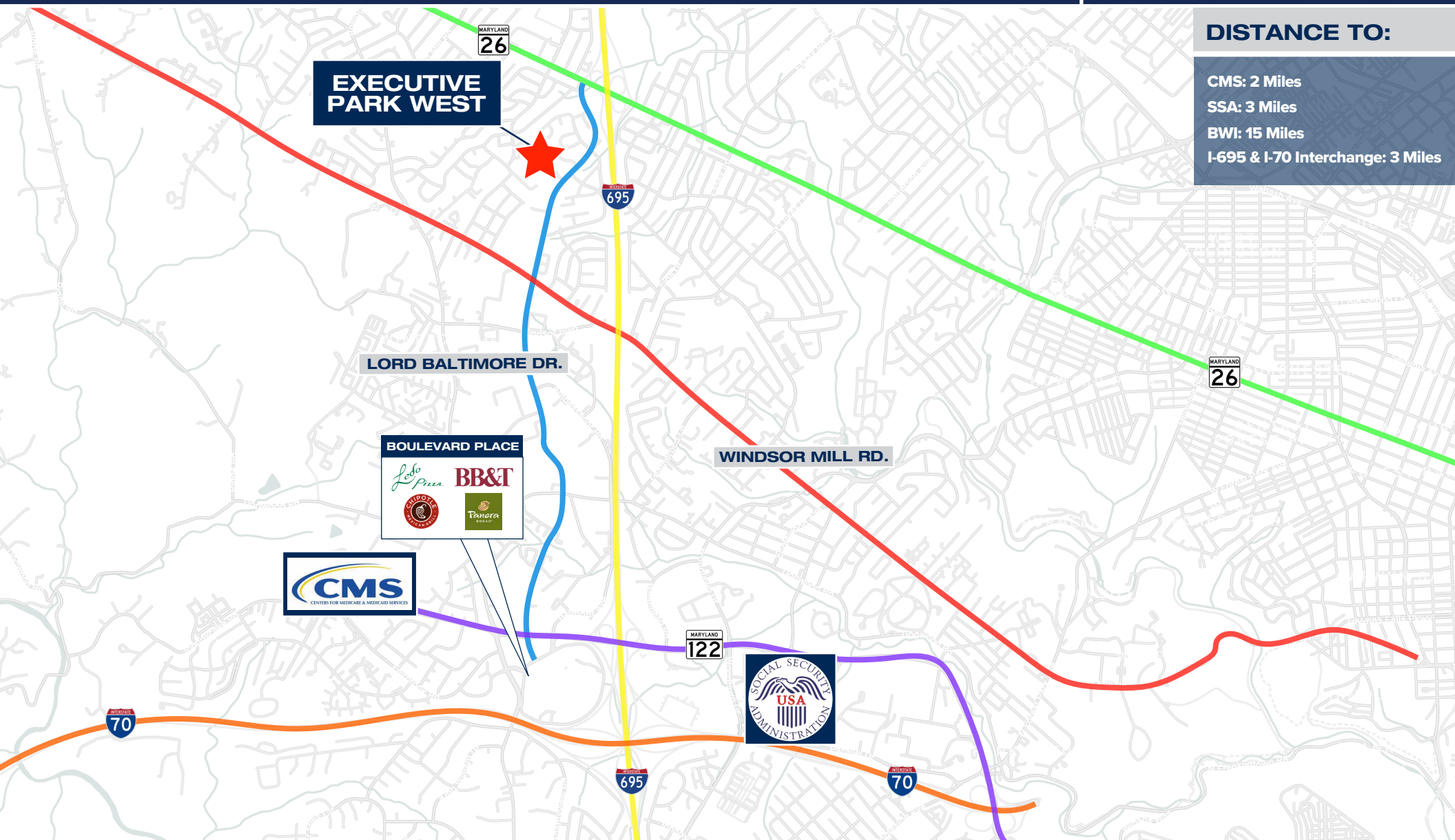
NOAH ADLER | LEASING ASSOCIATE
410.581.2510 | NADLER@DAVIDSBROWN.COM

DAVID S. BROWN ENTERPRISES | 100 PAINTERS MILL ROAD, OWINGS MILLS, MD 21117 | 410.581.2520 | WWW.DAVIDSBROWN.COM |    

3200 LORD BALTIMORE DRIVE

EXECUTIVE PARK WEST | 3200 LORD BALTIMORE DRIVE | WINDSOR MILL, MD 21244

MAP



DISTANCE TO:

CMS: 2 Miles
SSA: 3 Miles
BWI: 15 Miles
I-695 & I-70 Interchange: 3 Miles