

FORMER RITE AID DREXEL HILL, PA

710 BURMONT ROAD

±10,921 SF BUILDING AVAILABLE FOR LEASE

FORMER PHARMACY WITH EXCELLENT ROADSIDE VISIBILITY



metrocommercial.com | Plymouth Meeting, PA | Mount Laurel, NJ | Miami, FL | Philadelphia, PA

get in touch.

LUC CHAMPAGNE

Office 610.260.2671

Direct 860.833.1070

lchampagne@metrocommercial.com

PAT GALLAGHER

Office 610.260.2676

Direct 610.357.3883

pgallagher@metrocommercial.com

LOCATED IN A DENSELY POPULATED NEIGHBORHOOD



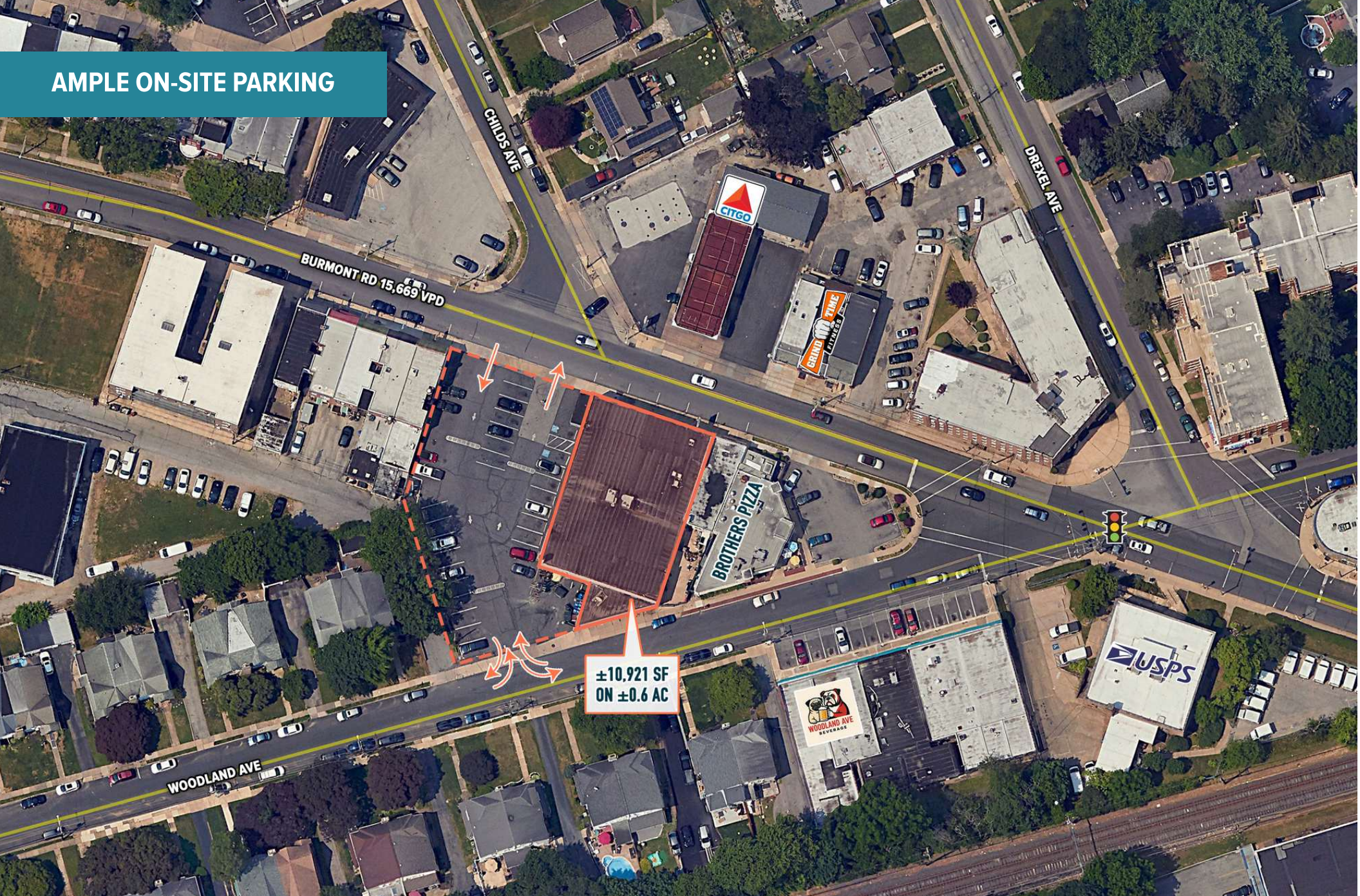
The information and images contained herein are from sources deemed reliable. However, Metro Commercial Real Estate, Inc. makes no representation whatsoever as to their accuracy or authenticity. Images shown may be modified for illustrative purposes. Images may be out-of-date and not current.

DREXEL HILL, PA
710 BURMONT ROAD



www.metrocommercial.com

AMPLE ON-SITE PARKING



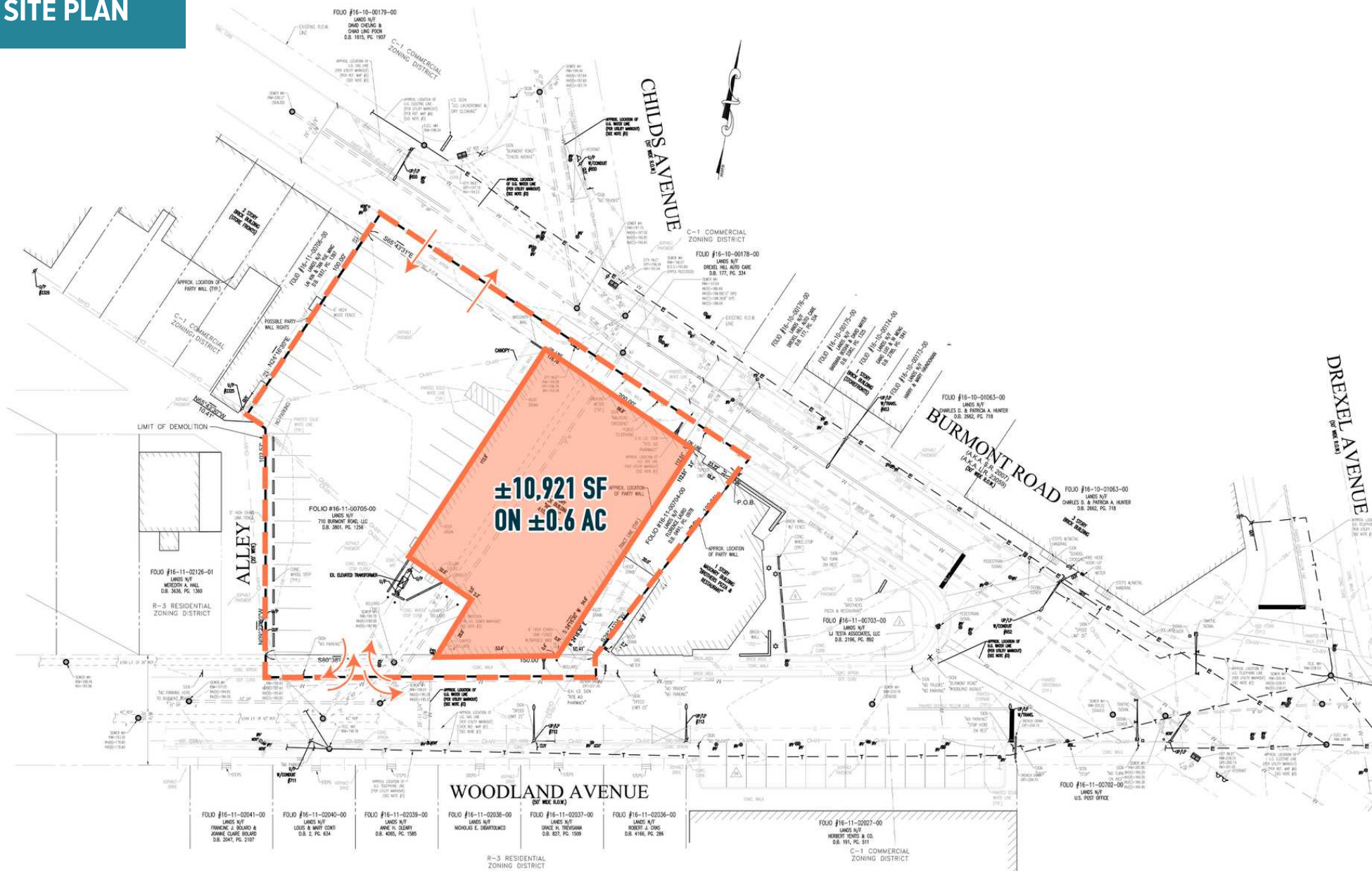
The information and images contained herein are from sources deemed reliable. However, Metro Commercial Real Estate, Inc. makes no representation whatsoever as to their accuracy or authenticity. Images shown may be modified for illustrative purposes. Images may be out-of-date and not current.

DREXEL HILL, PA
710 BURMONT ROAD



www.metrocommercial.com

SITE PLAN



The information and images contained herein are from sources deemed reliable. However, Metro Commercial Real Estate, Inc. makes no representation whatsoever as to their accuracy or authenticity. Images shown may be modified for illustrative purposes. Images may be out-of-date and not current.

DREXEL HILL, PA
710 BURMONT ROAD



www.metrocommercial.com

ADDITIONAL PHOTOS



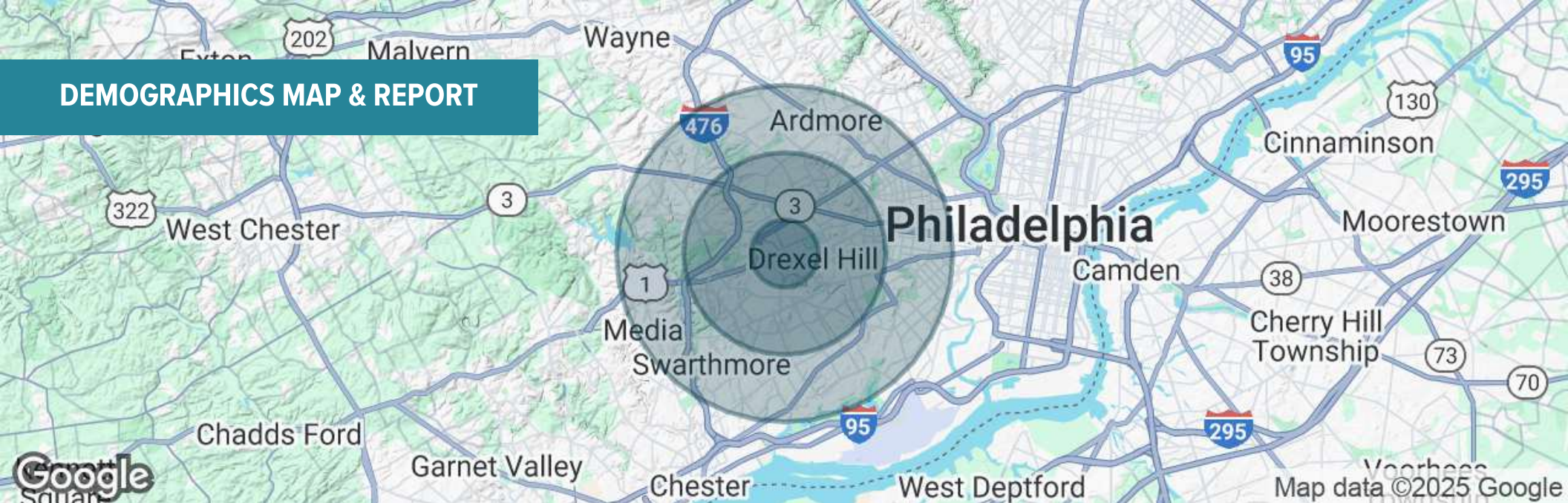
The information and images contained herein are from sources deemed reliable. However, Metro Commercial Real Estate, Inc. makes no representation whatsoever as to their accuracy or authenticity. Images shown may be modified for illustrative purposes. Images may be out-of-date and not current.

DREXEL HILL, PA
710 BURMONT ROAD



www.metrocommercial.com

DEMOGRAPHICS MAP & REPORT



POPULATION	1 MILE	3 MILES	5 MILES
Total Population	25,802	197,414	553,838
Average Age	41	40	40
Average Age (Male)	39	39	39
Average Age (Female)	42	41	41
HOUSEHOLDS & INCOME	1 MILE	3 MILES	5 MILES
Total Households	10,200	74,114	212,381
# of Persons per HH	2.5	2.7	2.6
Average HH Income	\$118,295	\$113,016	\$103,900
Average House Value	\$287,194	\$304,339	\$316,468

Demographics data derived from AlphaMap

The information and images contained herein are from sources deemed reliable. However, Metro Commercial Real Estate, Inc. makes no representation whatsoever as to their accuracy or authenticity. Images shown may be modified for illustrative purposes. Images may be out-of-date and not current.

DREXEL HILL, PA
710 BURMONT ROAD



www.metrocommercial.com