

LINCOLN SQUARE STOREFRONTS FOR LEASE

13.5' CEILING HEIGHT



Address:	Size:	Rental Rate:	Note:
5026 Lincoln:	900 SF	\$2,100/ Monthly, MG	Comes with a Basement
5030 Lincoln:	900 SF	\$2,100/ Monthly, MG	Comes with a Basement
5036 Lincoln:	900 SF	\$1,800/ Monthly, MG	Water Hookups for Salon Use

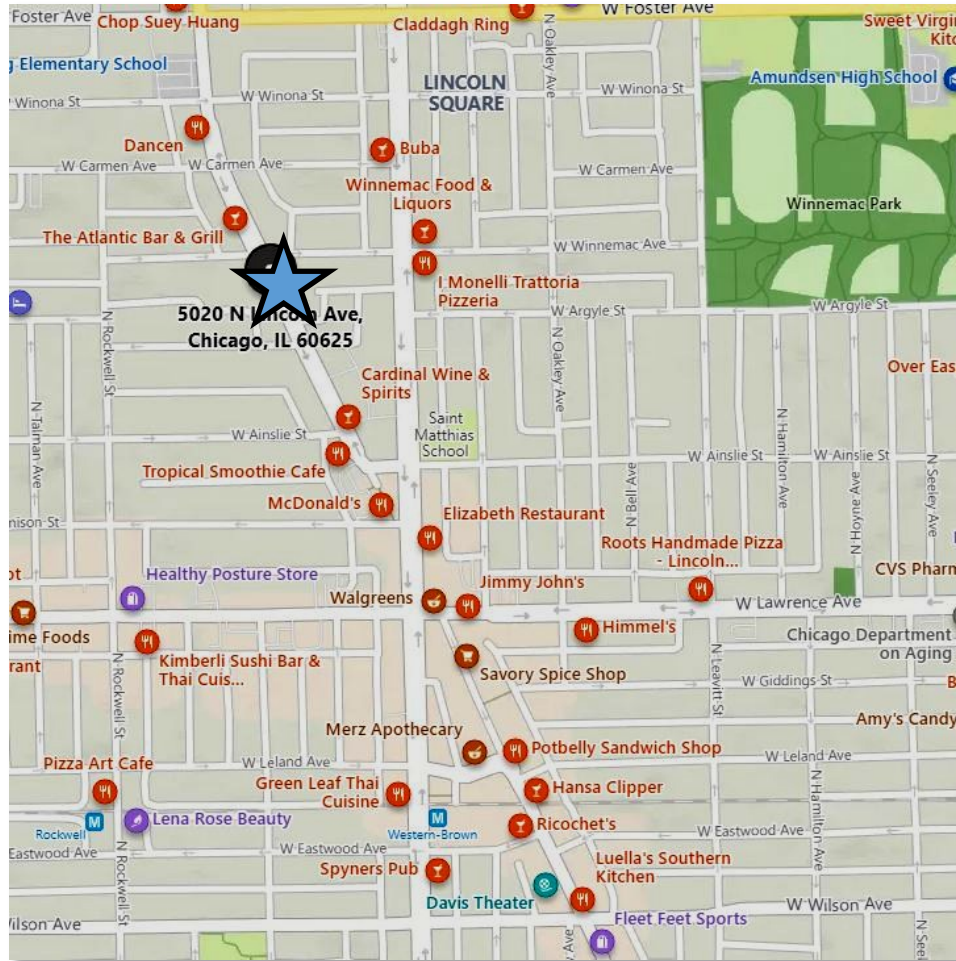
Explore perfect retail, office, or salon use spaces in Lincoln Square boasting great visibility, tall windows, and high ceiling reaching 13.5 feet. These premises offer bright, pristine interiors featuring hardwood floors and exposed brick, providing a perfect canvas for your business concept in a great Chicago neighborhood!



MJ WEINBERGER
847-334-2587
MJ@STRAUSSREALTY.COM

STRAUSS REALTY, LTD.
4220 W. MONTROSE AVE.
CHICAGO, ILLINOIS 60641
PHONE: 773-736-3600

LINCOLN SQUARE STOREFRONTS FOR LEASE



Lincoln Square has a total population of 40,494 with 19,143 households and a median household income of \$85,436. *Source: CMap Chicago 2020 Census*

Nearby businesses include Café Zozo, Little Fox Day School, Jibek Jolu, The Atlantic Bar & Grill, Dancen, Lincoln Ice Cream Company, and Tropical Smoothie Café.

Zoning: B3-1

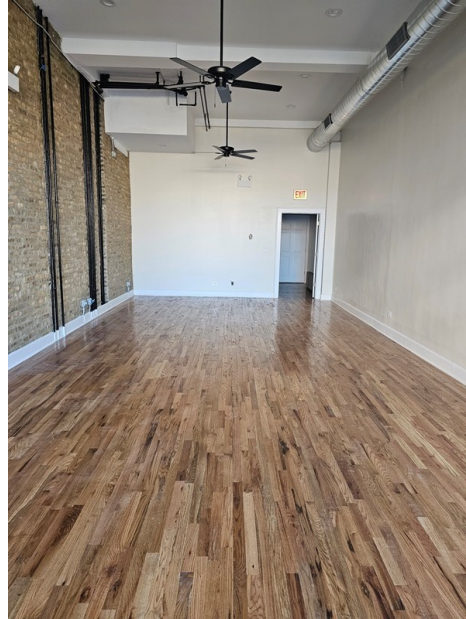
Public Transit: Lincoln & Argyle Bus Stop
Western Brown Line Stop



MJ WEINBERGER
847-334-2587
MJ@STRAUSSREALTY.COM

STRAUSS REALTY, LTD.
4220 W. MONTROSE AVE.
CHICAGO, ILLINOIS 60641
PHONE: 773-736-3600

LINCOLN SQUARE STOREFRONTS FOR LEASE



MJ WEINBERGER
847-334-2587
MJ@STRAUSSREALTY.COM

STRAUSS REALTY, LTD.
4220 W. MONTROSE AVE.
CHICAGO, ILLINOIS 60641
PHONE: 773-736-3600