

# METRO CENTRE

---

LIVE HERE. WORK HERE. GO PLACES.



[www.MetroCentreOM.com](http://www.MetroCentreOM.com)  
10400 Grand Central Ave, Owings Mills, MD 21117

10400 Grand Central Ave,  
Owings Mills, MD 21117

RENDERING



**106,000 SF**

5-Story Class A Building

**16,000 SF**

Street-Level Retail Space

**90,000 SF**

Class A Office Space

**2,000  
SPACES**

Attached Garage

**CALL OR EMAIL  
US FOR DETAILS**

**METRO  
CENTRE**

**KEVIN KEANE**

Senior Vice President  
of Office Leasing  
410.581.2519  
kevin@davidsbrown.com

**BRENT MANGUM**

Vice President  
of Office Leasing  
410.581.2518  
brent@davidsbrown.com

**NOAH ADLER**

Leasing Associate  
410.581.2510  
nadler@davidsbrown.com



10400 Grand Central Ave,  
Owings Mills, MD 21117

## BUILDING SPECS

### Overview

- Proposed five-story mid-rise Class A mixed-use office/retail building.
- Total RSF - Up to 105,676 SF
- Total Office - Up to 89,521 SF
- Street Level Retail - 16,155 SF
- Free, garage parking with enclosed bridgeway. Connection to building on two floors.
- Green design and system/program cost effective components.
- Exterior signage available. Visible to 140k cars daily.
- Owings Mills Metro Station is on-site.

### Total RSF - 105,676 RSF

LEVEL 1	16,155 SF RETAIL - AVAILABLE
LEVEL 2	22,538 SF OFFICE - AVAILABLE
LEVEL 3	22,538 SF OFFICE - AVAILABLE
LEVEL 4	22,490 SF OFFICE - AVAILABLE
LEVEL 5	21,955 SF OFFICE - AVAILABLE

**Column spacing**  
35'

**Celing Height**  
12' Clear 10'-0" AFF

**Delivery**  
September 2024

**Developer/Property Managers**  
David S Brown Enterprises

**Parking - Office**  
Attached Garage - 2,089 Free Spaces  
EV Charging Stations

**Architect**  
Curry Architects

**General Contractor**  
David S Brown Enterprises

**Transportation**  
Accessible to/from I-795 with zero traffic signals  
Direct connection to Owings Mills Metro Station



**KEVIN KEANE**  
Senior Vice President  
of Office Leasing  
410.581.2519  
kevin@davidsbrown.com

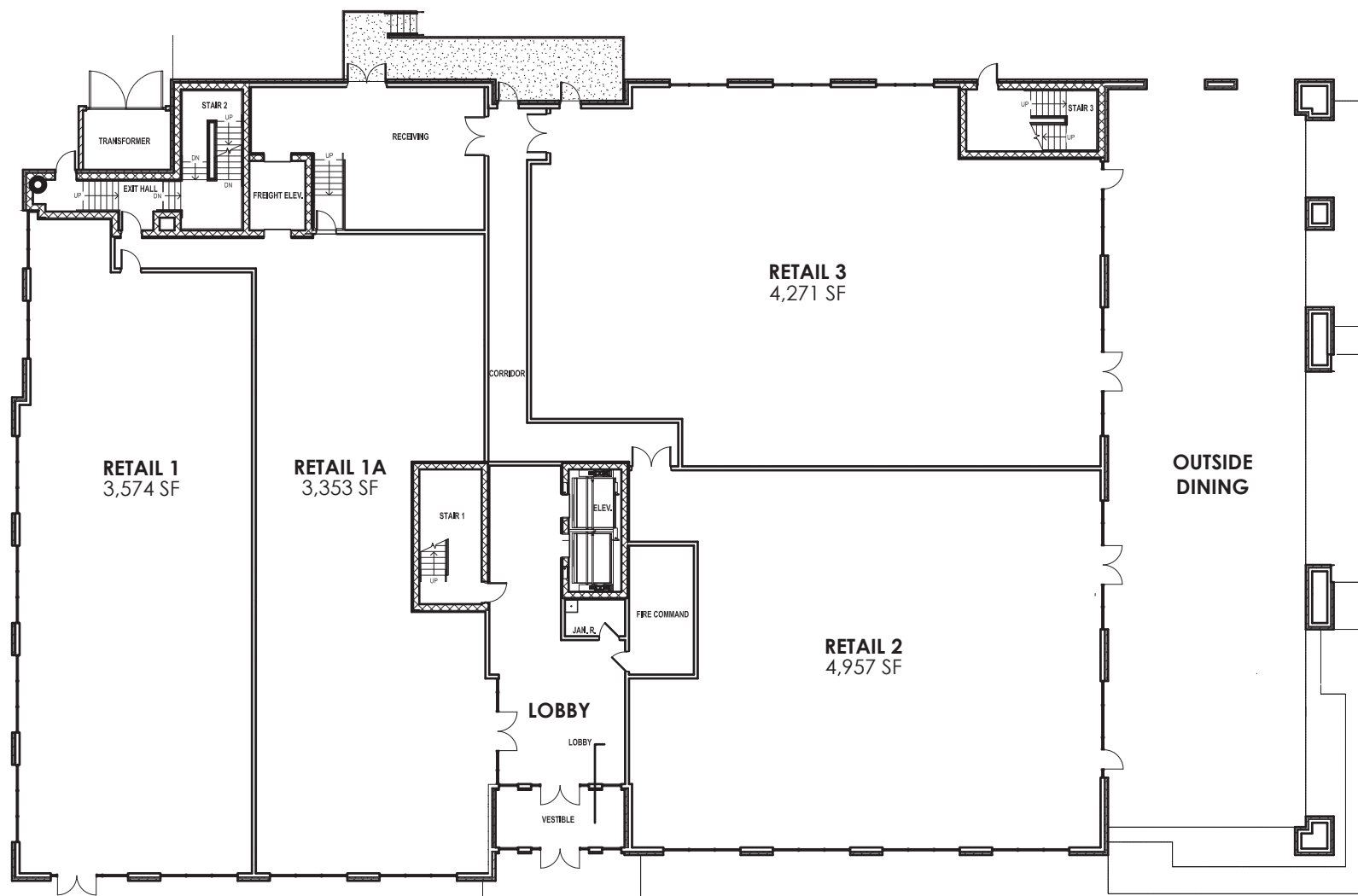
**BRENT MANGUM**  
Vice President  
of Office Leasing  
410.581.2518  
brent@davidsbrown.com

**NOAH ADLER**  
Leasing Associate  
410.581.2510  
nadler@davidsbrown.com



10400 Grand Central Ave,  
Owings Mills, MD 21117

## STREET LEVEL RETAIL LEVEL 1



**Available**  
16,155 SF

**METRO  
CENTRE**

**KEVIN KEANE**

Senior Vice President  
of Office Leasing  
410.581.2519  
kevin@davidsbrown.com

**BRENT MANGUM**

Vice President  
of Office Leasing  
410.581.2518  
brent@davidsbrown.com

**NOAH ADLER**

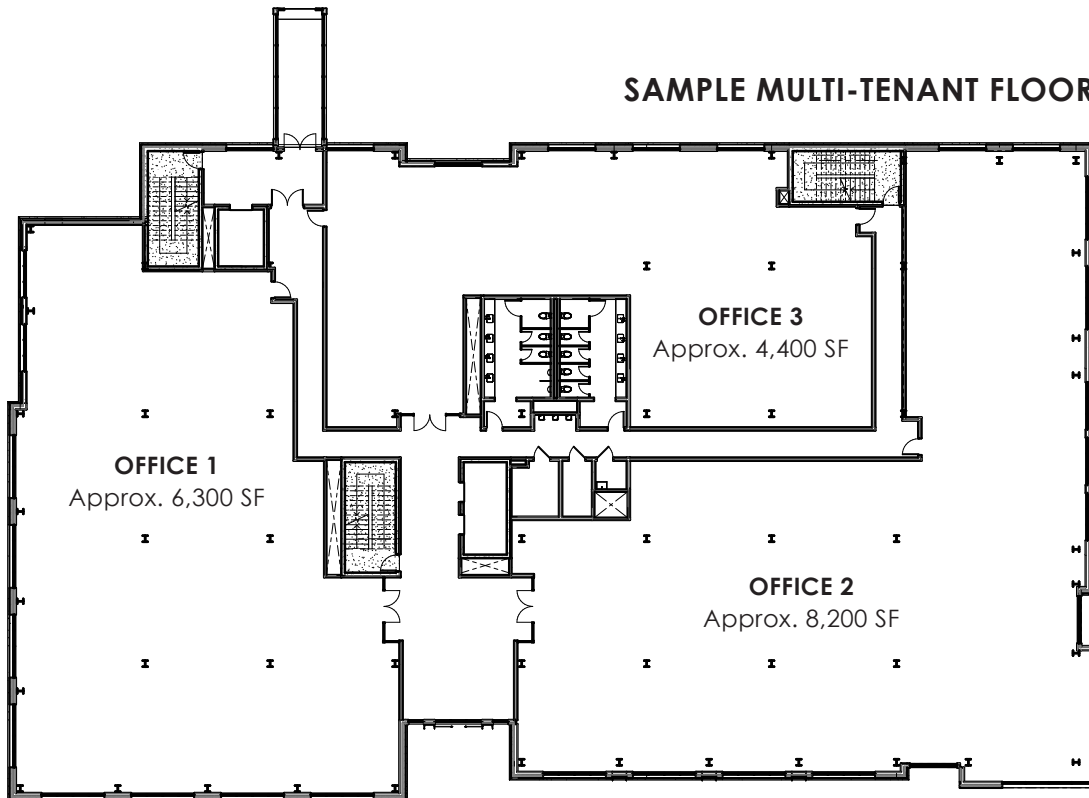
Leasing Associate  
410.581.2510  
nadler@davidsbrown.com



10400 Grand Central Ave,  
Owings Mills, MD 21117

## SAMPLE FLOOR PLAN LEVELS 2-5

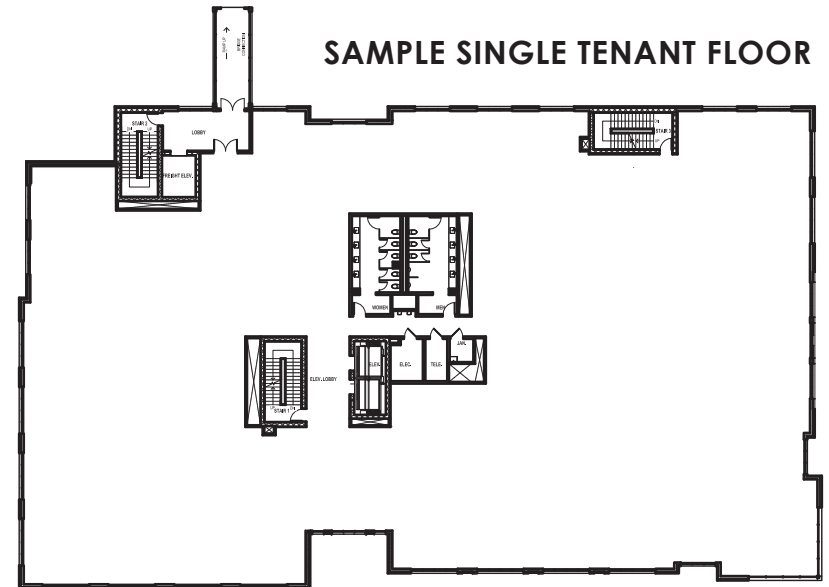
### SAMPLE MULTI-TENANT FLOOR



**Available**

Approx. - 22,500 SF

### SAMPLE SINGLE TENANT FLOOR



\*Floor plans are possible to change.

**METRO  
CENTRE**

#### KEVIN KEANE

Senior Vice President  
of Office Leasing  
410.581.2519  
kevin@davidsbrown.com

#### BRENT MANGUM

Vice President  
of Office Leasing  
410.581.2518  
brent@davidsbrown.com

#### NOAH ADLER

Leasing Associate  
410.581.2510  
nadler@davidsbrown.com



10400 Grand Central Ave,  
Owings Mills, MD 21117

SITE  
LOCATION



**METRO  
CENTRE**

**KEVIN KEANE**

Senior Vice President  
of Office Leasing  
410.581.2519  
kevin@davidsbrown.com

**BRENT MANGUM**

Vice President  
of Office Leasing  
410.581.2518  
brent@davidsbrown.com

**NOAH ADLER**

Leasing Associate  
410.581.2510  
nadler@davidsbrown.com



# 10400 Grand Central Ave, Owings Mills, MD 21117

## SITE PLAN



I-795 NORTH BOUND



OWINGS MILLS METRO STATION



I-795 SOUTH BOUND

Connection to  
North Campus & I-795-N

Direct connection from  
garage to Metro Station

10450 GRAND CENTRAL AVENUE

PARKING GARAGE  
2,089 SPACES

10300  
GRAND  
CENTRAL AVE  
LCC-1

5048 PAINTERS MILL ROAD

PARKING GARAGE  
2,865 SPACES

BUILDING  
O-1

10500 GRAND  
CENTRAL AVENUE  
RA-8

10400  
GRAND  
CENTRAL AVE  
RO-3

10200 GRAND CENTRAL AVENUE  
RO-2

10100 GRAND  
CENTRAL AVENUE  
EXTENDED STAY HOTEL  
RH-2

10501 GRAND  
CENTRAL AVE  
A-7

10301 GRAND CENTRAL AVENUE  
RA-2

10201 GRAND CENTRAL AVENUE  
RA-1

THE MARRIOTT AT  
METRO CENTRE  
RH-1

5100-5200 WAVERLY LANE  
RA-5 & RA-6

4800-5000 WAVERLY LANE  
RA-3 & RA-4

5101 WAVERLY LANE  
A-2

5001 WAVERLY LANE  
A-1

### KEY

**O-1**  
224,000 sf office

**RO-2**  
140,446 sf office  
42,466 sf retail

**RO-3**  
102,300 sf office  
19,000 sf retail

**RA-1**  
23,937 sf retail  
116 apartments

**RA-2**  
24,119 sf retail  
116 apartments

**RA-3 & RA-4**  
227 apartments  
401 space garage

**RA-5 & RA-6**  
375 apartments  
401 space garage

**A-7**  
165 apartments

**RA-8**  
137 apartments

**RH-1**  
229 hotel rooms

**RH-2**  
120 hotel rooms  
4,900 retail

**A-1**  
250 apartments

**A-2**  
250 apartments

**LCC-1**  
80,000 sf library  
40,000 sf comm. college

**METRO CENTRE  
AT OWINGS MILLS**  
SOUTH CAMPUS SITE PLAN

■ - IN DEVELOPMENT ■ - BUILT ■ - CONSTRUCTION ■ - PROPOSED

10400 Grand Central Ave,  
Owings Mills, MD 21117

## IMMEDIATE AREA MAP



**METRO  
CENTRE**

### KEVIN KEANE

Senior Vice President  
of Office Leasing  
410.581.2519  
kevin@davidsbrown.com

### BRENT MANGUM

Vice President  
of Office Leasing  
410.581.2518  
brent@davidsbrown.com

### NOAH ADLER

Leasing Associate  
410.581.2510  
nadler@davidsbrown.com



10400 Grand Central Ave,  
Owings Mills, MD 21117

## EXPANDED AREA MAP



METRO STATION  
CONNECTIONS TO  
MTA BUS LINES



DOWNTOWN  
BALTIMORE  
*20 minutes away*



BWI  
AIRPORT  
*25 minutes away*

**METRO  
CENTRE**

### KEVIN KEANE

Senior Vice President  
of Office Leasing  
410.581.2519  
kevin@davidsbrown.com

### BRENT MANGUM

Vice President  
of Office Leasing  
410.581.2518  
brent@davidsbrown.com

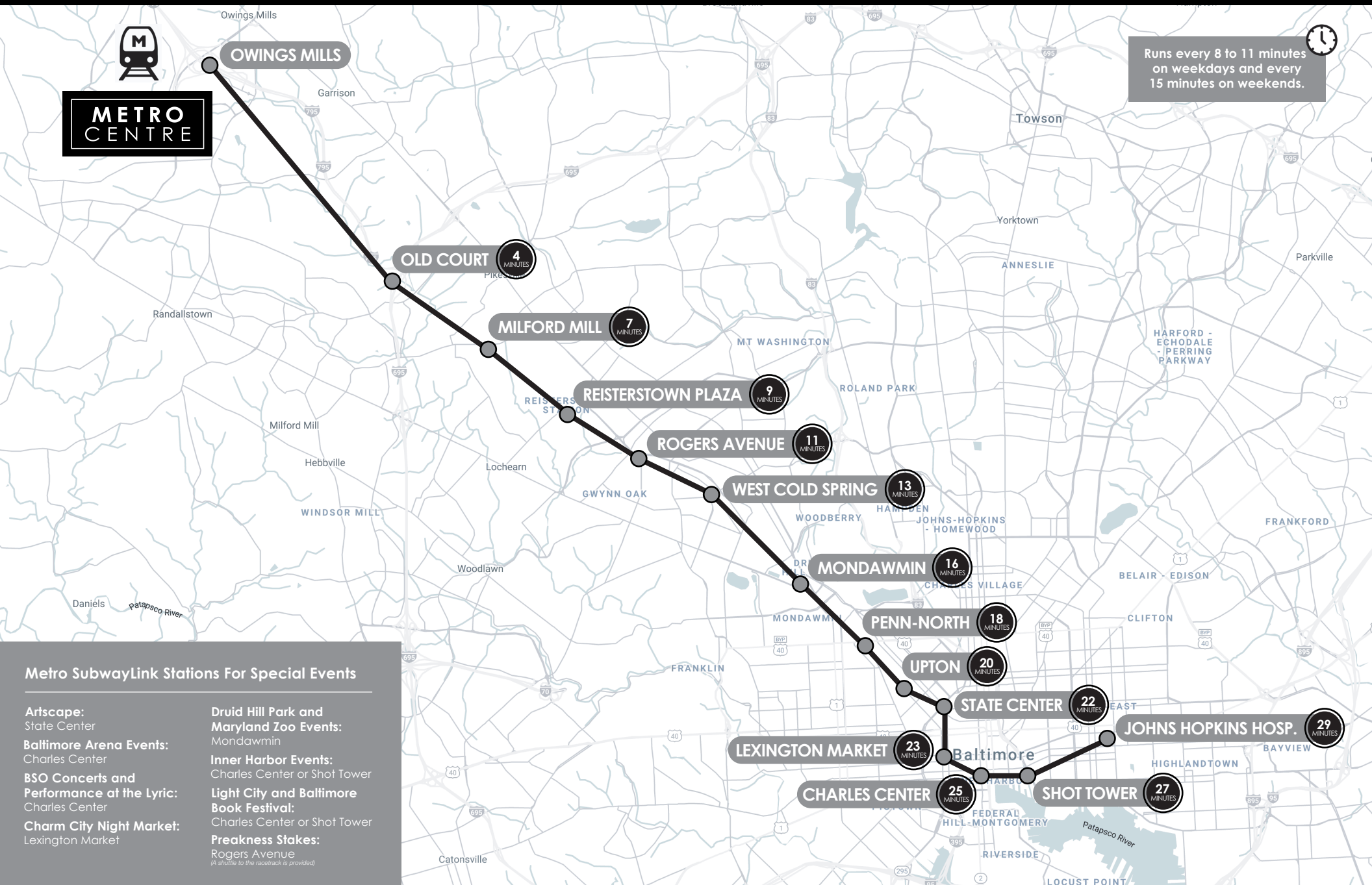
### NOAH ADLER

Leasing Associate  
410.581.2510  
nadler@davidsbrown.com



10400 Grand Central Ave,  
Owings Mills, MD 21117

# METRO TRANSIT MAP





**Grand Central Ave, Owings Mills, MD 21117**

**KEVIN KEANE**

Senior Vice President of Office Leasing

410.581.2519

[kevin@davidsbrown.com](mailto:kevin@davidsbrown.com)

**BRENT MANGUM**

Vice President of Office Leasing

410.581.2518

[brent@davidsbrown.com](mailto:brent@davidsbrown.com)

**NOAH ADLER**

Leasing Associate

410.581.2510

[nadler@davidsbrown.com](mailto:nadler@davidsbrown.com)

**David S. Brown Enterprises**

410.363.3434 tel

410.363.6758 fax

[contact@davidsbrown.com](mailto:contact@davidsbrown.com)

