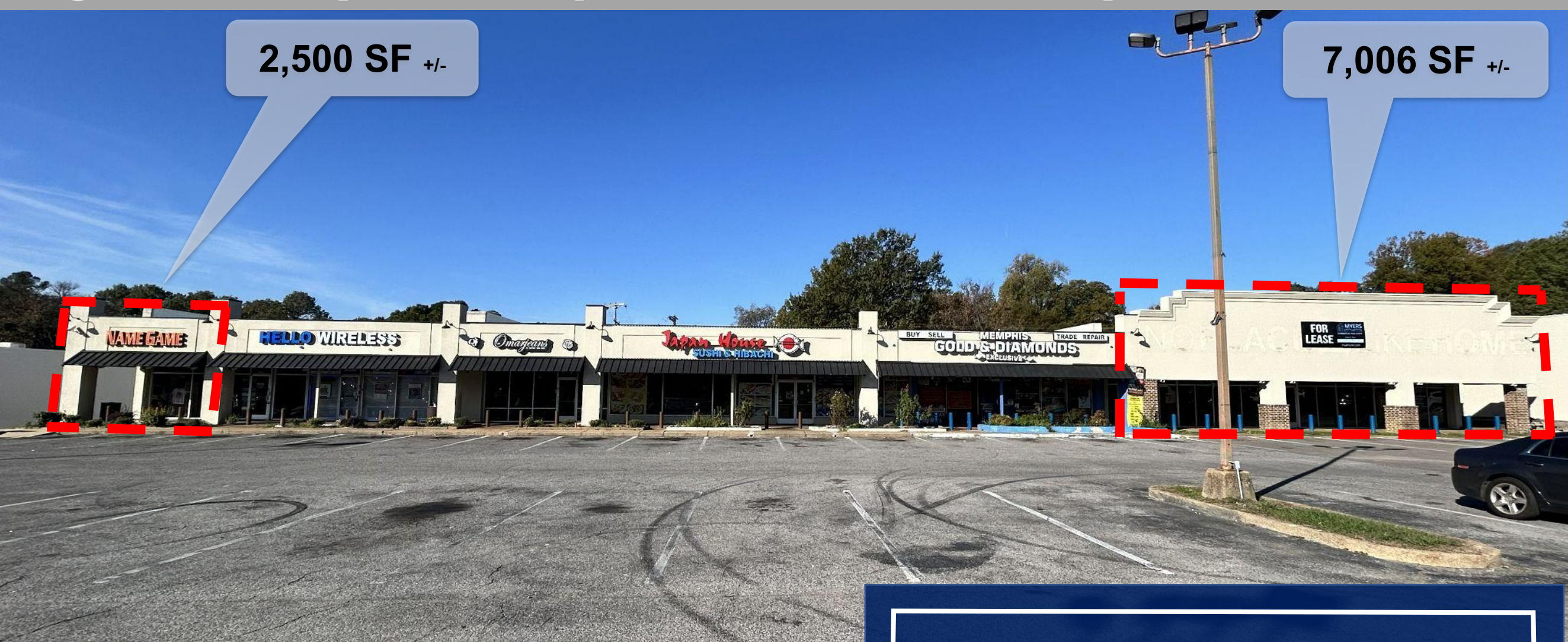


FOR LEASE

High Visibility Retail Spaces on Elvis Presley



2,500 - 7,006 SF +/-

Rate: \$11.00 PSF + NNN

**4271 & 4289 Elvis Presley Blvd
Memphis, TN 38116**

No.	SF	Availability
4271	7,006	\$11 PSF NNN
4289	2,500	\$11 PSF NNN

- ☐ High Profile Visibility on Elvis Presley Boulevard
- ☐ Join Krispy Kreme, Cookout, Beauty and Company, Burger King, and More!
- ☐ Wide Open Interior For All Types of Retail Uses
- ☐ Pull Up Front Door Parking



Disclaimer: All information contained herein is from sources deemed reliable; however, no representation or warranty is made to the accuracy of the information.



Melanie Myers Bland
melanie@myerscre.com
901-761-5595 Office
901-351-5595 Cell

773 E Brookhaven Circle
Memphis, TN 38117

#288335 Licensed in TN
#22327 Licensed in MS

